

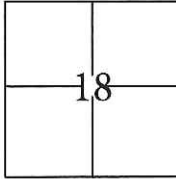
CORNER RECORD

Document Number CR-16-246

City of Stockton

County of San Joaquin, California

Brief Legal Description Colonial Estates, Unit No. 2, Volume 20 of Maps & Plats, Page 31.



CORNER TYPE

Government Corner Control
 Meander Property
 Rancho Other

COORDINATES(Optional)

N. _____
 E. _____
 Zone III NAD27 NAD83
 NAD83 Epoch 1991.35
 Elev. _____
 Vert. Datum: NGVD29 NADV88
 Meas. Units: Metric Imperial

T. 2 N., R. 6 E., M.D.B.&M.

Date of Survey December 18, 2015

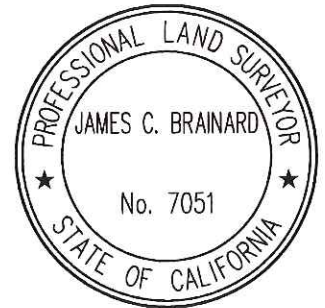
Corner - Left as found Found and tagged Established Reestablished Rebuilt

Identification and type of corner found: Evidence used to identify or procedure used to establish or reestablish the corner:
 Used conventional survey methods and CR 16-076 to reestablish the position of obliterated cut crosses, as shown on page 2.

A description of the physical condition of the monument as found and as set or reset:
 Set cut cross with brass tags stamped L.S. 7051 in concrete. Also, found 3/4" iron pipes tagged R.C.E. 15831 in monument wells as shown on page 2.

SURVEYOR'S STATEMENT

This Corner Record was prepared by me or under my direction in conformance with the Land Surveyor's Act on December 22, 2015.
 Signed [Signature] P.L.S. or R.C.E. No.: 7051



COUNTY SURVEYOR'S STATEMENT

This Corner Record was received May 16, 2016 and examined and filed June 9, 2016.
 Signed [Signature] P.L.S. or R.C.E. No.: 4842



Title County Surveyor
 County Surveyor's Comment _____

STATEMENT OF PURPOSE:

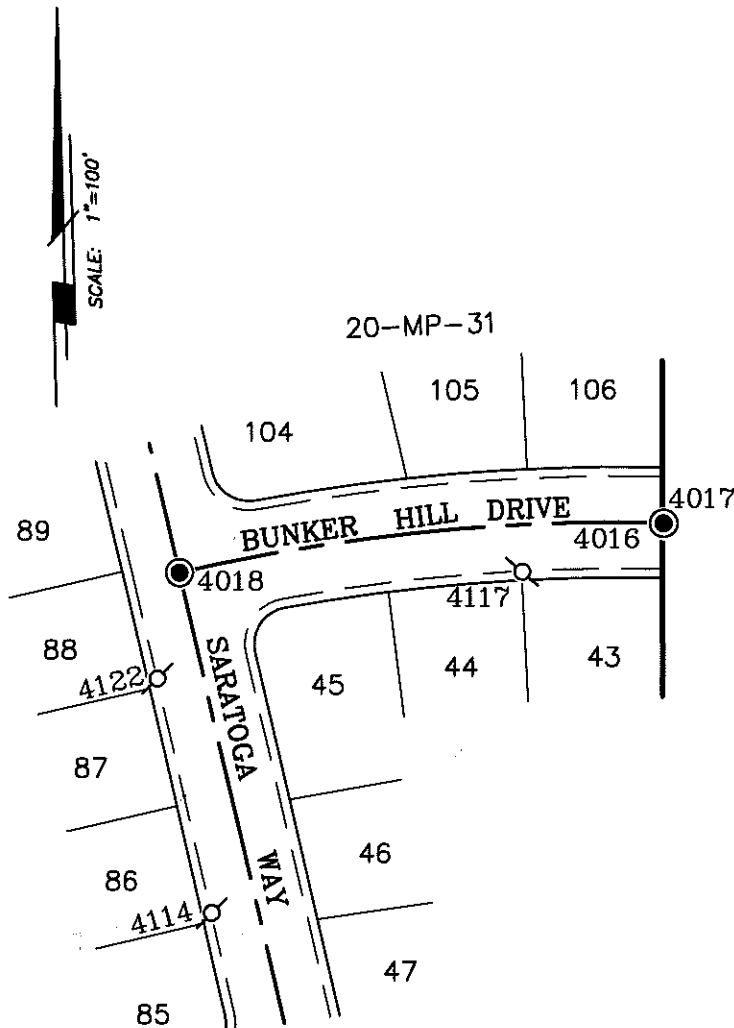
THE PURPOSE OF THIS SURVEY IS TO RECORD AND REESTABLISH THE LOCATION OF MONUMENTS ORIGINALLY SHOWN ON CR 16-076 DISTURBED AFTER THE CONSTRUCTION OF UNDERGROUND IMPROVEMENTS. THE PURPOSE OF THIS SURVEY IS NOT TO MAKE PROPERTY LINE DETERMINATIONS. LOT LINES SHOWN HEREON ARE FOR GENERAL LOCATION AND INFORMATIONAL PURPOSES ONLY.

LEGEND:

- ⊙ INDICATES SET BRASS TAG STAMPED L.S. 7051.
- INDICATES 3/4" IRON PIPE TAGGED 15831 IN MONUMENT WELL

DATUM STATEMENT:

COORDINATES SHOWN HEREON ARE GRID AND ARE BASED ON CITY OF STOCKTON MONUMENTS 4N-16 AND 1N-7, CALIFORNIA COORDINATE SYSTEM (CCS83), ZONE III, 1983 NAD, (1991.35 EPOCH STOCKTON & SAN JOAQUIN COUNTY GPS ADJUSTMENT) AND SHOWN ON RECORD OF SURVEY BOOK 33 OF SURVEYS, PAGE 20. THE PROJECT SPECIFIC COMBINED SCALE FACTOR IS 0.99994066.



GRID COORDINATES (U.S. SURVEY FEET)		
POINT	NORTHING	EASTING
4016	2196529.00'	6316816.34'
4017	2196528.97'	6316811.37'
4018	2196501.25'	6316555.22'
4114	2196317.92'	6316572.94'
4117	2196502.68'	6316739.93'
4122	2196444.42'	6316542.94'