

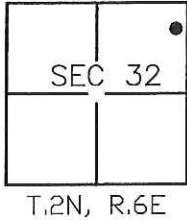
# CORNER RECORD

Document Number CR-16-232

City of STOCKTON

County of SAN JOAQUIN, California

Brief Legal Description TWO SCRIBED "X" AT THE PROJECTED LOT LINES OF LOT 26 OF VISTA DEL RIO UNIT NO. 2 LOCATED IN SECTION 32, T.2N, R.6E, M.D.B.&M.



### CORNER TYPE

Government Corner  Control   
 Meander  Property   
 Rancho  Other

Date of Survey 3-24-16

### COORDINATES (Optional)

N \_\_\_\_\_  
 E \_\_\_\_\_  
 Zone \_\_\_\_\_ NAD27  NAD83   
 NAD83 Epoch \_\_\_\_\_  
 Elev. \_\_\_\_\_  
 Vert. Datum: NVGD29  NVGD88   
 Meas. Units: Metric  Imperial

Corner-- Left as found  Found and tagged  Established  Reestablished  Rebuilt

Identification and type of corner found: Evidence used to identify or procedure used to establish or reestablish the corner:  
FOUND MONUMENTS AS SHOWN ON PAGE 2.

A description of the physical condition of the monument as found and as set or reset:  
MONUMENTS ARE IN AREA OF RECONSTRUCTION, SET TIES AS SHOWN ON PAGE 2.

### SURVEYOR'S STATEMENT

This Corner Record was prepared by me or under my direction in conformance with the Land Surveyors' Act on MARCH 28, 2016,

Signed [Signature] P.L.S. or R.C.E. Number 6953



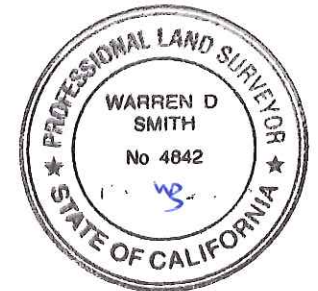
### COUNTY SURVEYOR'S STATEMENT

This Corner Record was received May 10, 2016 and examined and filed June 9, 2016

Signed [Signature] P.L.S. or R.C.E. No: 4842

Title County Surveyor

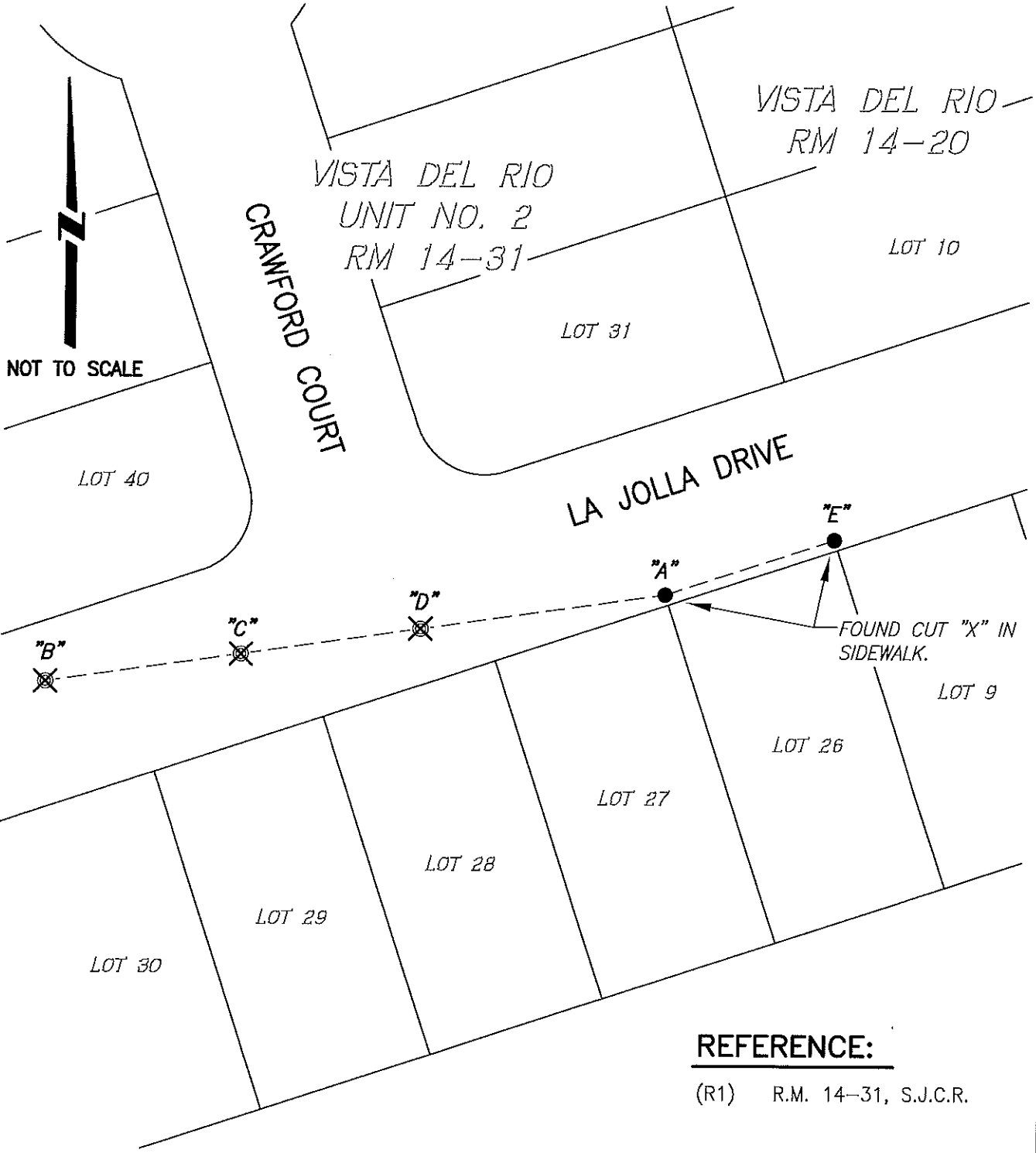
County Surveyor's Comment \_\_\_\_\_



**LEGEND:**

- ⊗ SET CONCRETE NAIL WITH BRASS TAG L.S. 6953 IN PAVEMENT.
- FOUND MONUMENT AS NOTED.
- R.M. DENOTES RECORD MAP
- (M) MEASURED DISTANCE. ALL DISTANCES ARE MEASURED UNLESS NOTED OTHERWISE.

X AND DISTANCE TABLE		
BS-@-FS	X	FS DISTANCE
B-A-B	00°00'00"	175.92'(M)
B-A-C	00°00'00"	120.59'(M)
B-A-D	00°00'00"	69.59'(M)
B-A-E	169°55'28"	49.98'(M)



**REFERENCE:**

(R1) R.M. 14-31, S.J.C.R.