

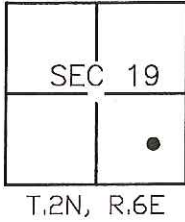
CORNER RECORD

Document Number CR-16-230

City of STOCKTON

County of SAN JOAQUIN, California

Brief Legal Description SCRIBED "X" AT THE PROJECTED LOT LINE BETWEEN LOTS 211 & 212 OF LINCOLN VILLAGE WEST, UNIT NO. 5 LOCATED IN SECTION 19, T.2N, R.6E, M.D.B.&M.



CORNER TYPE

Government Corner Control
 Meander Property
 Rancho Other

Date of Survey 3-23-16

COORDINATES (Optional)

N _____
 E _____
 Zone _____ NAD27 NAD83
 NAD83 Epoch _____
 Elev. _____
 Vert. Datum: NVGD29 NVGD88
 Meas. Units: Metric Imperial

Corner— Left as found Found and tagged Established Reestablished Rebuilt

Identification and type of corner found: Evidence used to identify or procedure used to establish or reestablish the corner:
FOUND SCRIBED "X" AT THE PROJECTED LOT LINE BETWEEN LOTS 211 & 212 OF LINCOLN VILLAGE WEST, UNIT NO. 5 FILED IN BOOK 18 OF MAPS AND PLATS AT PAGE 29, SAN JOAQUIN COUNTY RECORDS.

A description of the physical condition of the monument as found and as set or reset:
MONUMENT IS IN AREA OF RECONSTRUCTION, SET TIES AS SHOWN ON PAGE 2.

SURVEYOR'S STATEMENT

This Corner Record was prepared by me or under my direction in conformance with the Land Surveyors' Act on MARCH 28, 2016,

Signed [Signature] P.L.S. or R.C.E. Number 6953



COUNTY SURVEYOR'S STATEMENT

This Corner Record was received May 10, 2016 and examined and filed June 9, 2016

Signed [Signature] P.L.S. or R.C.E. No. 4842

Title County Surveyor

County Surveyor's Comment _____



LEGEND:

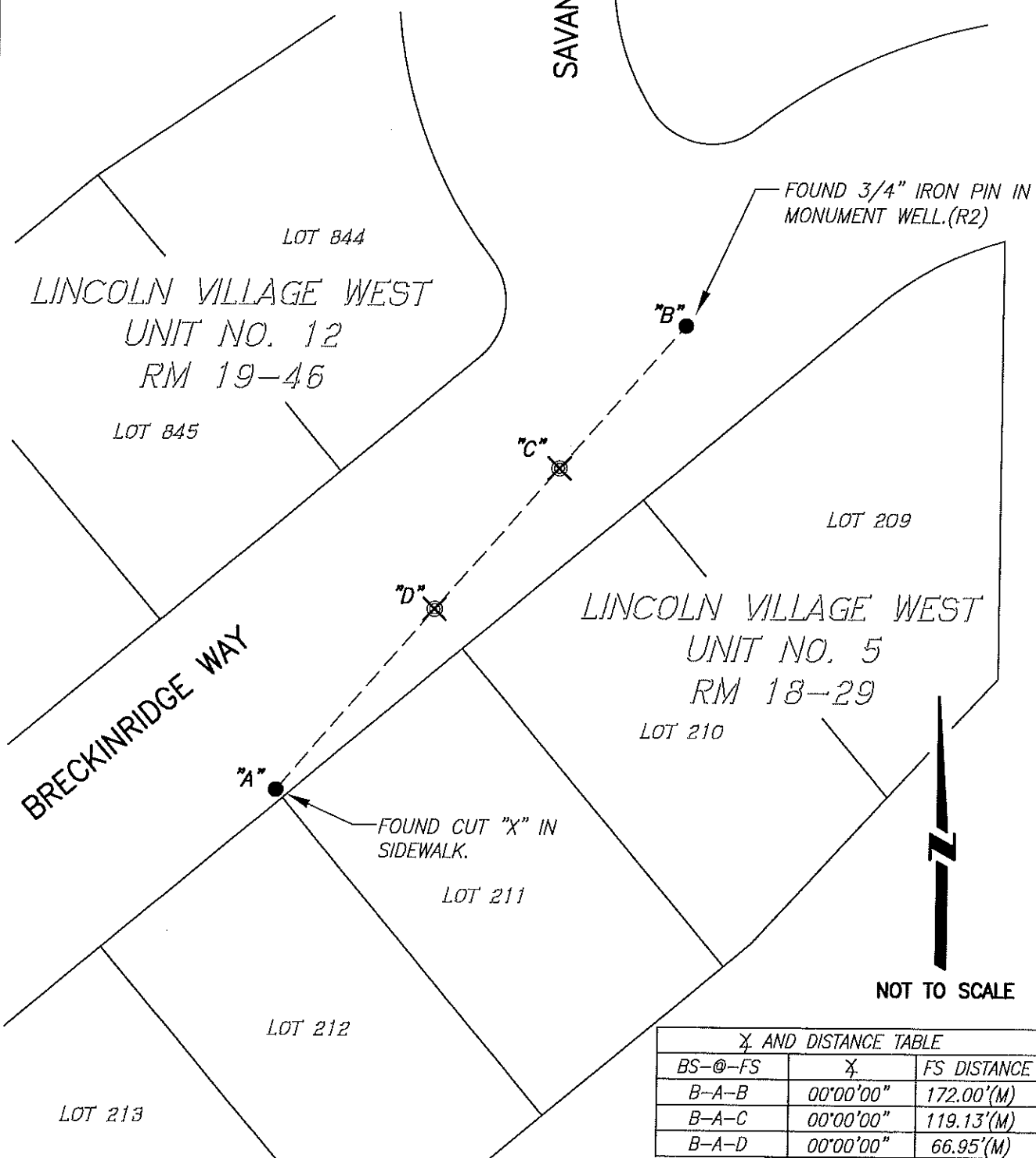
- ⊗ SET CONCRETE NAIL WITH BRASS TAG L.S. 6953 IN PAVEMENT.
- FOUND MONUMENT AS NOTED.
- R.M. DENOTES RECORD MAP
- (M) MEASURED DISTANCE. ALL DISTANCES ARE MEASURED UNLESS NOTED OTHERWISE.

REFERENCE:

- (R1) R.M. 18-29, S.J.C.R.
- (R2) R.M. 19-46, S.J.C.R.

SAVANNAH PLACE

FOUND 3/4" IRON PIN IN MONUMENT WELL.(R2)



NOT TO SCALE

X AND DISTANCE TABLE		
BS-@-FS	X	FS DISTANCE
B-A-B	00'00'00"	172.00'(M)
B-A-C	00'00'00"	119.13'(M)
B-A-D	00'00'00"	66.95'(M)