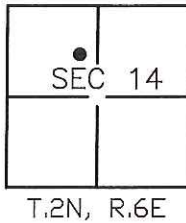


CORNER RECORD

Document Number CR-16-225
City of STOCKTON County of SAN JOAQUIN, California

Brief Legal Description SCRIBED "X" AT THE PROJECTED LOT LINE BETWEEN LOTS 104 & 105 OF
NORMANDY VILLAGE UNIT NO. 2. LOCATED IN SECTION 14, T.2N, R.6E, M.D.B.&M.



CORNER TYPE

COORDINATES (Optional)

Government Corner Control
 Meander Property
 Rancho Other

N _____
 E _____
 Zone _____ NAD27 NAD83
 NAD83 Epoch _____
 Elev. _____
 Vert. Datum: NVGD29 NVGD88
 Meas. Units: Metric Imperial

Date of Survey 3-21-16

Corner— Left as found Found and tagged Established Reestablished Rebuilt

Identification and type of corner found: Evidence used to identify or procedure used to establish or reestablish the corner:
FOUND SCRIBED "X" AT THE PROJECTED LOT LINE BETWEEN LOTS 104 & 105 OF NORMANDY VILLAGE
UNIT NO.2 FILED IN BOOK 22 OF MAPS AND PLATS AT PAGE 16, SAN JOAQUIN COUNTY RECORDS.

A description of the physical condition of the monument as found and as set or reset: _____
MONUMENT IS IN AREA OF RECONSTRUCTION, SET TIES AS SHOWN ON PAGE 2.

SURVEYOR'S STATEMENT

This Corner Record was prepared by me or under my direction in conformance with
the Land Surveyors' Act on MARCH 25, 2016,

Signed [Signature] P.L.S. or R.C.E. Number 6953



COUNTY SURVEYOR'S STATEMENT

This Corner Record was received May 10, 2016 and examined
and filed June 9, 2016

Signed [Signature] P.L.S. or R.C.E. No: 4842

Title County Surveyor

County Surveyor's Comment _____

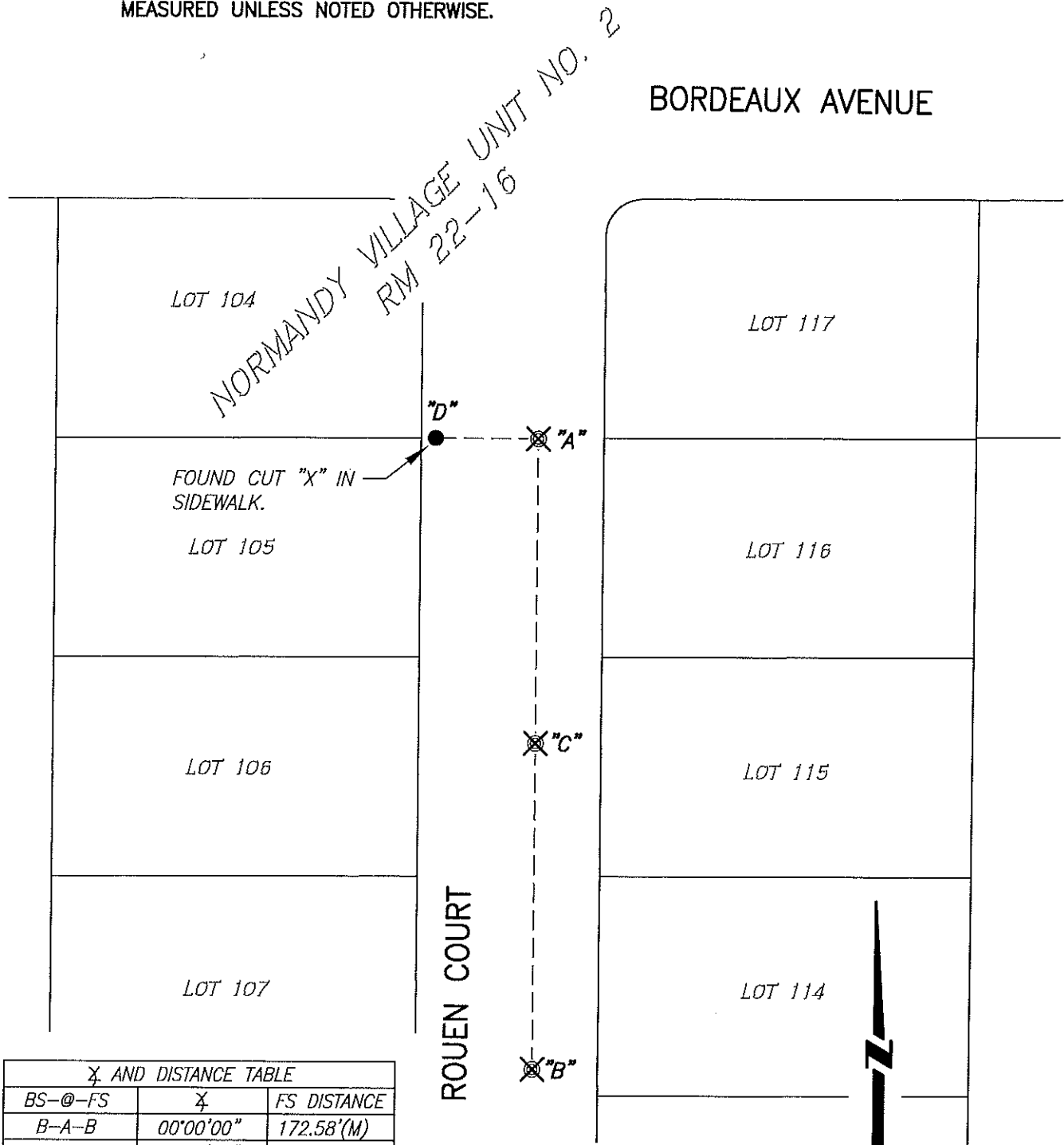


LEGEND:

- ⊗ SET CONCRETE NAIL WITH BRASS TAG L.S. 6953 IN PAVEMENT.
- FOUND MONUMENT AS NOTED.
- R.M. DENOTES RECORD MAP
- (M) MEASURED DISTANCE. ALL DISTANCES ARE MEASURED UNLESS NOTED OTHERWISE.

REFERENCE:

(R1) R.M. 22-16, S.J.C.R.



⊗ AND DISTANCE TABLE

BS-@-FS	⊗	FS DISTANCE
B-A-B	00°00'00"	172.58'(M)
B-A-C	00°00'00"	83.44'(M)
B-A-D	90°25'23"	28.13'(M)

NOT TO SCALE