

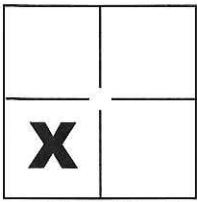
CORNER RECORD

Document Number CR-16-220

City of Ripon

County of San Joaquin, California

Brief Legal Description Southwest corner of Parcel "3" per P.M. 22-154, S.J.C.R.



CORNER TYPE

Government Corner Control
 Meander Property
 Rancho Other

COORDINATES(Optional)

N. _____
 E. _____
 Zone _____ NAD27 NAD83
 NAD83 Epoch _____
 Elev. _____
 Vert. Datum: NGVD29 NADV88
 Meas. Units: Metric Imperial

Sec. 20, T.2S., R.8E.,
M.D.B. & M.

Date of Survey May 29, 2007

Corner - Left as found Found and tagged Established Reestablished Rebuilt

Identification and type of corner found: Evidence used to identify or procedure used to establish or reestablish the corner:
See Sheet 2

A description of the physical condition of the monument as found and as set or reset: _____
See Sheet 2

SURVEYOR'S STATEMENT

This Corner Record was prepared by me or under my direction in conformance with
 the Land Surveyor's Act on May 18, 2016.

Signed Michael L. Quararoli P.L.S. or R.C.E. No.: L.S. 4450



COUNTY SURVEYOR'S STATEMENT

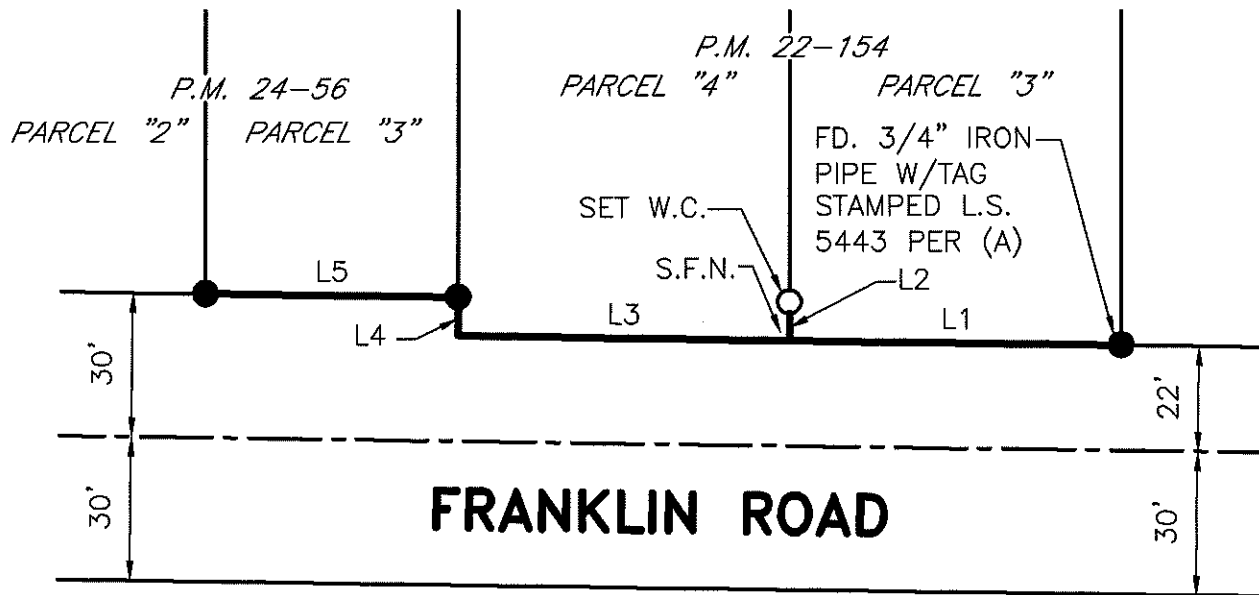
This Corner Record was received May 23, 2016 and examined
 and filed May 27, 2016.

Signed Warren D. Smith P.L.S. or R.C.E. No.: 4842

Title County Surveyor

County Surveyor's Comment _____





LEGEND

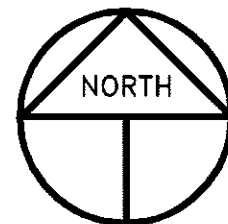
- INDICATES FOUND 3/4" IRON PIPE W/TAG STAMPED L.S. 4450 PER (B), UNLESS NOTED OTHERWISE
- INDICATES SET 3/4" IRON PIPE W/TAG STAMPED L.S. 4450
- (M) INDICATES MEASURED ON THIS SURVEY
- P.M. INDICATES PARCEL MAP, BOOK AND PAGE, S.J.C.R.
- S.J.C.R. INDICATES SAN JOAQUIN COUNTY RECORDS
- S.F.N. INDICATES SEARCHED FOUND NOTHING
- W.C. INDICATES WITNESS CORNER

REFERENCES

- (A) P.M. 22-154, S.J.C.R.
- (B) P.M. 24-56, S.J.C.R.

LINE TABLE

LINE	BEARING	DISTANCE
L1	N89°12'24"W (M)(A)	69.23'(M)(A)
L2	N00°00'14"W (M)(A)	8.00'(M)
L3	N89°12'24"W (M)(A)	69.22'(M)(A)
L4	N00°00'14"W (M)(A)	8.00'(M)(A)
L5	N89°12'24"W (M)(A)	52.72'(M)(B)



SCALE: 1" = 40'
2007-130