

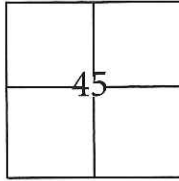
# CORNER RECORD

Document Number CR-16-205

City of Stockton

County of San Joaquin, California

Brief Legal Description Burkett Acres and Burkett Villas, Book 8 of Maps & Plats, Page 67, Book 10 of Maps and Plats, Page 04, Book 5 of Parcel Maps, Page 185, Book 16 of Parcel Maps, Page 65 and Book 16 of Parcel Maps, Page 89



C.M. Weber Grant

### CORNER TYPE

Government Corner  Control   
Meander  Property   
Rancho  Other

Date of Survey March 2, 2016

### COORDINATES(Optional)

N. \_\_\_\_\_  
E. \_\_\_\_\_  
Zone III NAD27  NAD83   
NAD83 Epoch 1991.35  
Elev. \_\_\_\_\_  
Vert. Datum: NGVD29  NADV88   
Meas. Units: Metric  Imperial

Corner - Left as found  Found and tagged  Established  Reestablished  Rebuilt

Identification and type of corner found: Evidence used to identify or procedure used to establish or reestablish the corner:

Established coordinates on all found monuments by the use of G.P.S. and conventional survey methods. Tied all found monuments to the City of Stockton Horizontal Control System. Evidence identification and field procedure in more detail are shown on page 2.

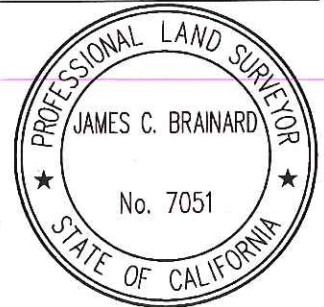
A description of the physical condition of the monument as found and as set or reset: \_\_\_\_\_

Found cut crosses, 1/2" rebar, a bent iron pin, and an empty monument well with 2 foot swing ties as shown on page 2.

### SURVEYOR'S STATEMENT

This Corner Record was prepared by me or under my direction in conformance with the Land Surveyor's Act on March 4, 2016.

Signed [Signature] P.L.S. or R.C.E. No.: 7051



### COUNTY SURVEYOR'S STATEMENT

This Corner Record was received April 18, 2016 and examined and filed May 10, 2016.

Signed [Signature] P.L.S. or R.C.E. No.: 4842

Title County Surveyor

County Surveyor's Comment \_\_\_\_\_



## STATEMENT OF PURPOSE:

THE PURPOSE OF THIS SURVEY IS TO IDENTIFY AND RECORD THE LOCATION OF EXISTING MONUMENTS PRIOR TO PG&E IMPROVEMENTS. NO CLAIM IS MADE AS TO THE RELATIONSHIP OF THE MONUMENTS SHOWN HEREON TO THE EXISTING PROPERTY LINES. LOT LINES SHOWN ARE FOR GENERAL LOCATION AND INFORMATIONAL PURPOSES ONLY.

## DATUM STATEMENT:

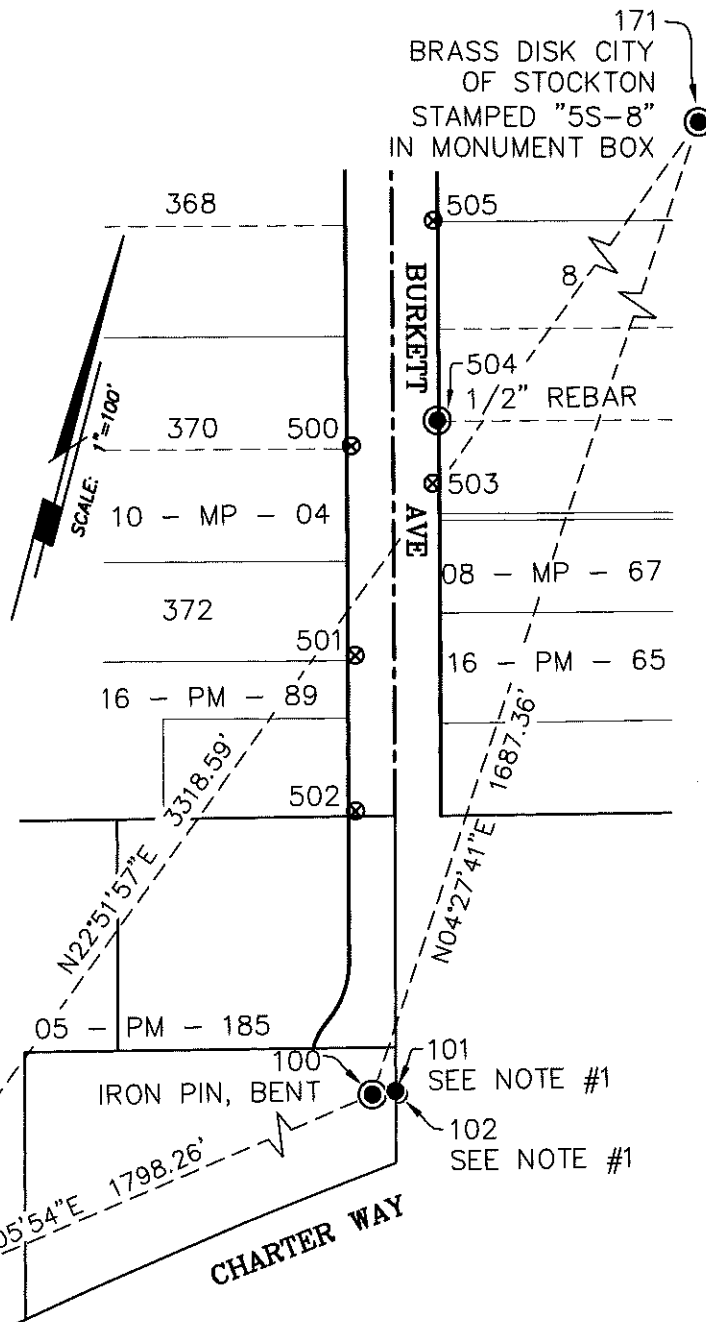
COORDINATES SHOWN HEREON ARE GRID AND ARE BASED ON CITY OF STOCKTON MONUMENTS 5S-8 AND 5S-11 CALIFORNIA COORDINATE SYSTEM (CCS83), ZONE III, 1983 NAD, (1991.35 EPOCH STOCKTON & SAN JOAQUIN COUNTY GPS ADJUSTMENT) AND SHOWN ON RECORD OF SURVEY BOOK 35 OF SURVEYS, PAGE 05. THE PROJECT SPECIFIC SCALE FACTOR IS 0.99993525.

GRID COORDINATES (U.S. SURVEY FEET)		
POINT	NORTHING	EASTING
100	2169225.67'	6346234.12'
101	2169231.30'	6346245.40'
102	2169229.95'	6346247.85'
103	2169229.41'	6346245.90'
171	2170907.92'	6346365.38'
174	2167850.11'	6345075.86'
500	2169557.60'	6346119.34'
501	2169449.69'	6346154.79'
502	2169369.35'	6346180.03'
503	2169551.10'	6346167.38'
504	2169584.28'	6346159.78'
505	2169687.32'	6346125.86'

## LEGEND:

- ⊗ INDICATES FOUND CUT CROSS, NO TAG.
- INDICATES FOUND MONUMENT AS NOTED
- INDICATES FOUND 2 FOOT SWING TIE

174  
BRASS DISK CITY  
OF STOCKTON  
STAMPED "5S-11"  
IN MONUMENT BOX



NOTE #1  
FOUND AN EMPTY WELL MONUMENT  
WITH 2 FOOT SWING TIES.