

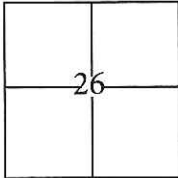
CORNER RECORD

Document Number CR-16-200

City of Lathrop

County of San Joaquin, California

Brief Legal Description Lathrop Village Homes, Unit No. 5, Book of Maps & Plats Vol. 20, Page 54.



T. 1 S., R. 6 E. M.D.B. & M.

CORNER TYPE

Government Corner Control
 Meander Property
 Rancho Other

Date of Survey March 7, 2016

COORDINATES(Optional)

N. _____
 E. _____
 Zone III NAD27 NAD83
 NAD83 Epoch 1991.35
 Elev. _____
 Vert. Datum: NGVD29 NADV88
 Meas. Units: Metric Imperial

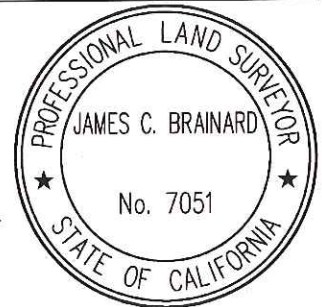
Corner - Left as found Found and tagged Established Reestablished Rebuilt

Identification and type of corner found: Evidence used to identify or procedure used to establish or reestablish the corner:
Tied all found centerline monuments to the Primary Survey Control for Reclamation 17. Used conventional survey methods to establish a position on found cut crosses. Evidence identification and field procedure in more detail are shown on page 2.

A description of the physical condition of the monument as found and as set or reset: _____
Found 3/4" iron pins, no tag, in monument wells and found cut crosses in concrete as shown on page 2.

SURVEYOR'S STATEMENT

This Corner Record was prepared by me or under my direction in conformance with the Land Surveyor's Act on March 14, 2016.
 Signed [Signature] P.L.S. or R.C.E. No.: 7051



COUNTY SURVEYOR'S STATEMENT

This Corner Record was received April 18, 2016 and examined and filed May 10, 2016.
 Signed [Signature] P.L.S. or R.C.E. No.: 4842
 Title County Surveyor
 County Surveyor's Comment _____



STATEMENT OF PURPOSE:

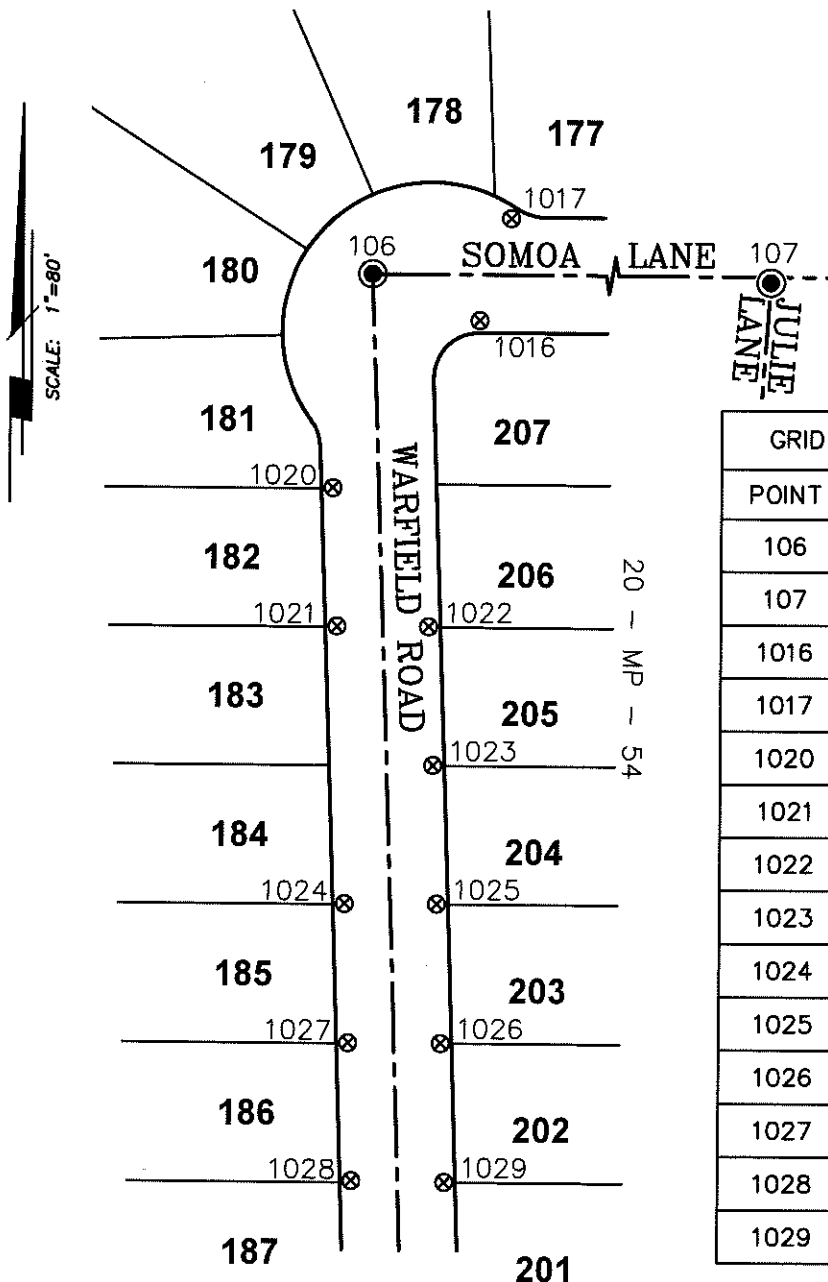
THE PURPOSE OF THIS SURVEY IS TO IDENTIFY AND RECORD THE LOCATION OF EXISTING MONUMENTS PRIOR TO PG&E IMPROVEMENTS. NO CLAIM IS MADE AS TO THE RELATIONSHIP OF THE MONUMENTS SHOWN HEREON TO THE EXISTING PROPERTY LINES. ORIGINAL LOT LINES SHOWN ARE FOR GENERAL LOCATION AND INFORMATIONAL PURPOSES ONLY.

DATUM STATEMENT:

COORDINATES SHOWN HEREON ARE GRID AND ARE BASED ON THE PRIMARY SURVEY CONTROL NETWORK FOR RECLAMATION 17 POINT ID NO. 6, 7 AND 604, CALIFORNIA COORDINATE SYSTEM (CCS83), ZONE III, 1983 NAD, (1991.35 GPS ADJUSTMENT) AS SHOWN ON RECORD OF SURVEY BOOK 38 OF SURVEYS, PAGE 119. DISTANCES SHOWN ARE GRID. THE PROJECT SPECIFIC SCALE FACTOR IS 0.99992976.

LEGEND:

- ⊗ INDICATES FOUND CUT CROSS, NO TAG.
- ⊙ INDICATES FOUND 3/4" IRON PIN, NO TAG, IN MONUMENT WELL, UNLESS OTHERWISE NOTED



GRID COORDINATES (U.S. SURVEY FEET)		
POINT	NORTHING	EASTING
106	2120211.42'	6334285.17'
107	2120210.41'	6334546.15'
1016	2120191.35'	6334331.65'
1017	2120235.58'	6334345.19'
1020	2120118.70'	6334268.35'
1021	2120058.66'	6334270.39'
1022	2120058.56'	6334310.27'
1023	2119998.51'	6334312.36'
1024	2119938.61'	6334274.40'
1025	2119938.53'	6334314.40'
1026	2119878.48'	6334316.46'
1027	2119878.63'	6334276.41'
1028	2119819.15'	6334278.24'
1029	2119818.54'	6334318.43'