

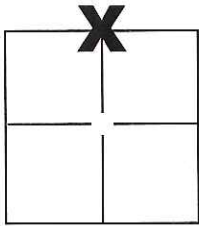
# CORNER RECORD

Document Number CR-16-197

City of \_\_\_\_\_

County of San Joaquin, California

Brief Legal Description North 1/4 Section Corner of Section 6, T.1N., R.5E., M.D.B. & M. Per R.S. 17-37



Sec. 6 T.1N., R.5E.,  
M.D.B. & M.

### CORNER TYPE

Government Corner  Control   
 Meander  Property   
 Rancho  Other

Date of Survey February 20, 2016

### COORDINATES(Optional)

N. \_\_\_\_\_  
 E. \_\_\_\_\_  
 Zone \_\_\_\_\_ NAD27  NAD83   
 NAD83 Epoch \_\_\_\_\_  
 Elev. \_\_\_\_\_  
 Vert. Datum: NGVD29  NADV88   
 Meas. Units: Metric  Imperial

Corner - Left as found  Found and tagged  Established  Reestablished  Rebuilt

Identification and type of corner found: Evidence used to identify or procedure used to establish or reestablish the corner:

See Sheet 2

A description of the physical condition of the monument as found and as set or reset: \_\_\_\_\_

See Sheet 2

### SURVEYOR'S STATEMENT

This Corner Record was prepared by me or under my direction in conformance with the Land Surveyor's Act on March 15, 2016.

Signed Michael L. Quartaroni P.L.S. or R.C.E. No.: L.S. 4450



### COUNTY SURVEYOR'S STATEMENT

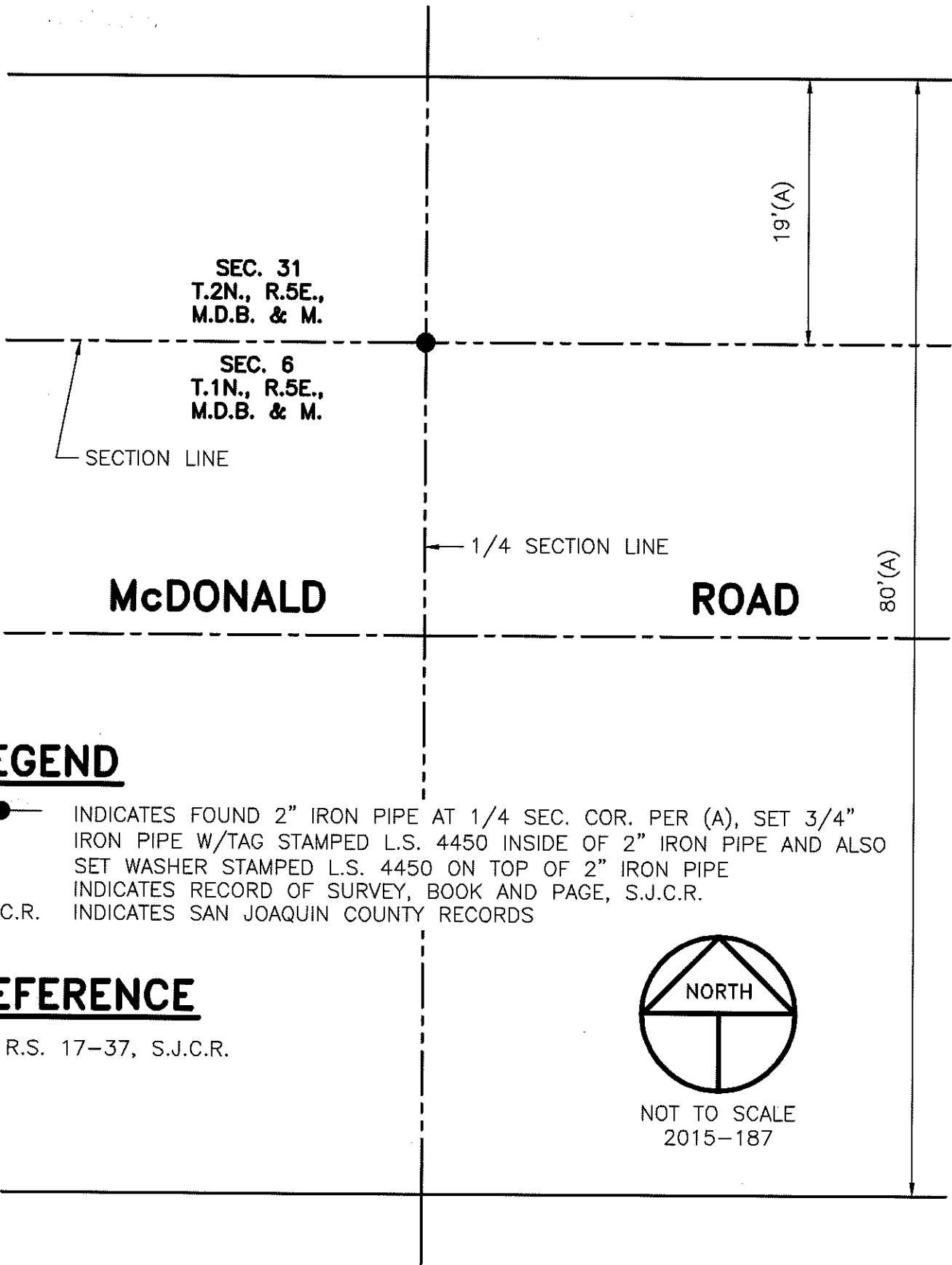
This Corner Record was received April 13, 2016 and examined and filed May 9, 2016.

Signed Warren D. Smith P.L.S. or R.C.E. No.: 4042

Title County Surveyor

County Surveyor's Comment \_\_\_\_\_





SEC. 31  
T.2N., R.5E.,  
M.D.B. & M.

SEC. 6  
T.1N., R.5E.,  
M.D.B. & M.

SECTION LINE

1/4 SECTION LINE

McDONALD

ROAD

80'(A)

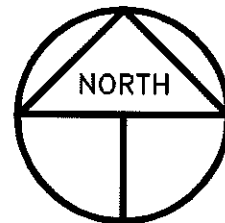
19'(A)

**LEGEND**

- INDICATES FOUND 2" IRON PIPE AT 1/4 SEC. COR. PER (A), SET 3/4" IRON PIPE W/TAG STAMPED L.S. 4450 INSIDE OF 2" IRON PIPE AND ALSO SET WASHER STAMPED L.S. 4450 ON TOP OF 2" IRON PIPE
- R.S. INDICATES RECORD OF SURVEY, BOOK AND PAGE, S.J.C.R.
- S.J.C.R. INDICATES SAN JOAQUIN COUNTY RECORDS

**REFERENCE**

(A) R.S. 17-37, S.J.C.R.



NOT TO SCALE  
2015-187