

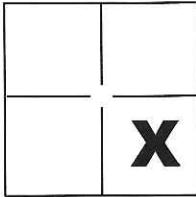
CORNER RECORD

Document Number CR-16-195

City of _____

County of San Joaquin, California

Brief Legal Description The Southeast Corner of Section 5, as shown on R.S. 16-160, S.J.C.R.



Sec. 5 T.1N., R.5E.,
M.D.B. & M.

CORNER TYPE

Government Corner Control
 Meander Property
 Rancho Other

Date of Survey February 20, 2016

COORDINATES(Optional)

N. _____
 E. _____
 Zone _____ NAD27 NAD83
 NAD83 Epoch _____
 Elev. _____
 Vert. Datum: NGVD29 NADV88
 Meas. Units: Metric Imperial

Corner - Left as found Found and tagged Established Reestablished Rebuilt

Identification and type of corner found: Evidence used to identify or procedure used to establish or reestablish the corner:

See Sheet 2

A description of the physical condition of the monument as found and as set or reset: _____

See Sheet 2

SURVEYOR'S STATEMENT

This Corner Record was prepared by me or under my direction in conformance with
 the Land Surveyor's Act on March 15, 2016.

Signed Michael L. Quartaroli P.L.S. or R.C.E. No.: L.S. 4450



COUNTY SURVEYOR'S STATEMENT

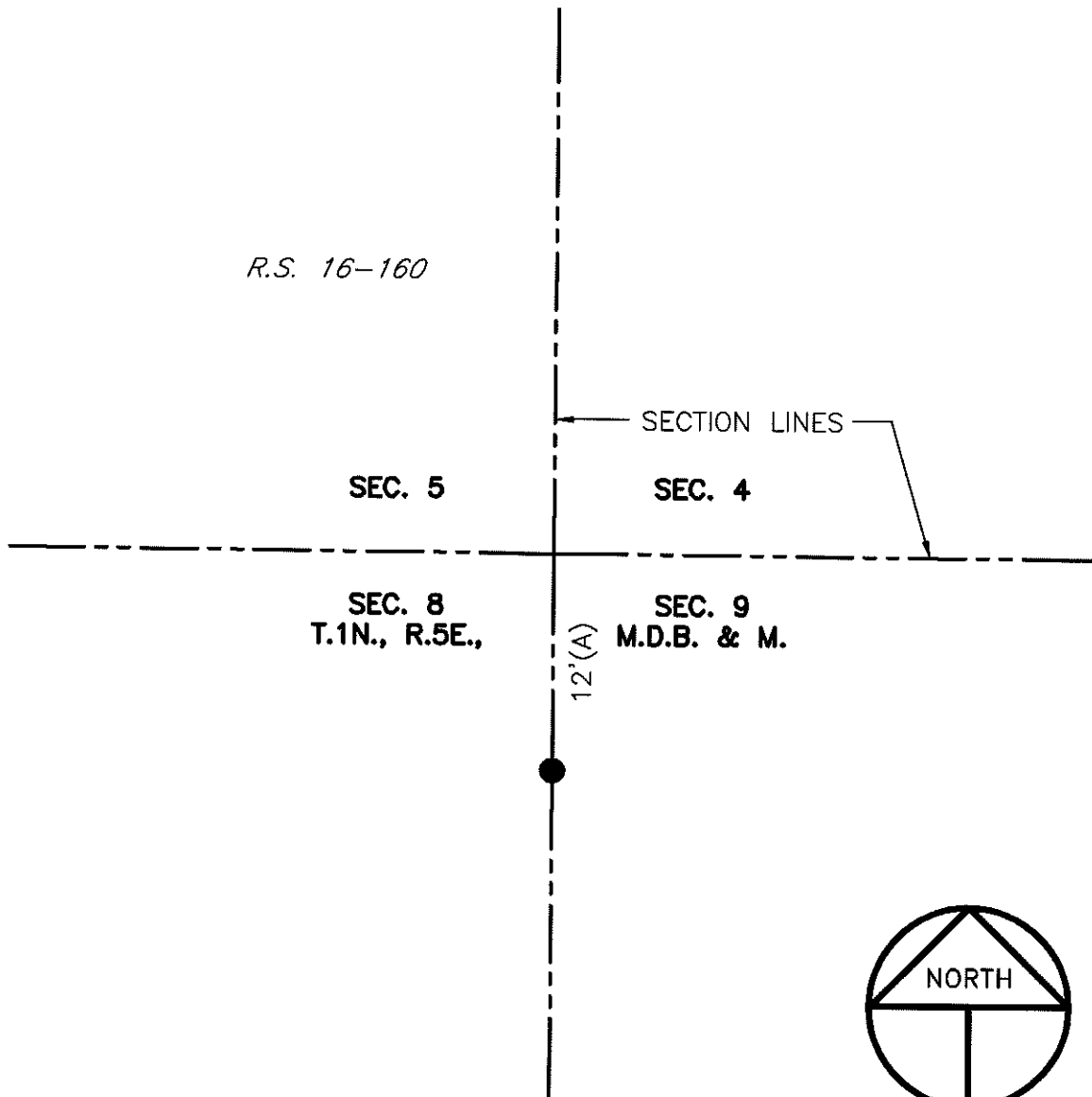
This Corner Record was received April 13, 2016 and examined
 and filed May 9, 2016.

Signed Warren D. Smith P.L.S. or R.C.E. No.: 4842

Title County Surveyor

County Surveyor's Comment _____





SCALE: 1" = 10'
2015-187

LEGEND

- INDICATES FOUND 1-1/4" PIPE PER (A), SET PLASTIC CAP W/BRASS TAG STAMPED LS 4450 ON TOP OF PIPE.
- R.S. INDICATES RECORD OF SURVEY, BOOK AND PAGE, S.J.C.R.
- S.J.C.R. INDICATES SAN JOAQUIN COUNTY RECORDS

REFERENCE

(A) R.S. 16-160, S.J.C.R.