

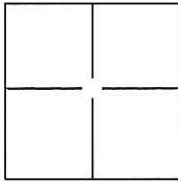
CORNER RECORD

Document Number CR-16-189

City of Stockton

County of San Joaquin, California

Brief Legal Description North Stockton, Volume 2 of Maps & Plats, Page 22



CORNER TYPE

Government Corner Control
 Meander Property
 Rancho Other

Date of Survey January 26, 2016

COORDINATES(Optional)

N. _____
 E. _____
 Zone III NAD27 NAD83
 NAD83 Epoch 1991.35
 Elev. _____
 Vert. Datum: NGVD29 NADV88
 Meas. Units: Metric Imperial

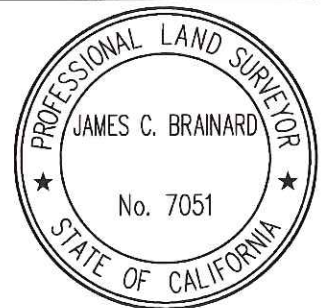
Corner - Left as found Found and tagged Established Reestablished Rebuilt

Identification and type of corner found: Evidence used to identify or procedure used to establish or reestablish the corner:
Used Map of North Stockton and Chas H. Widdows' field book pages and maps to identify evidence.
Established coordinates on all found monuments by the use of G.P.S. and conventional survey methods.
Tied all found monuments to the City of Stockton Horizontal Control System. Evidence identification and field procedure in more detail are shown on page 2.

A description of the physical condition of the monument as found and as set or reset:
Found cut "X"s in concrete, iron pins, 1" iron pipes, an axle, and 1/2" rebar as shown on page 2.

SURVEYOR'S STATEMENT

This Corner Record was prepared by me or under my direction in conformance with the Land Surveyor's Act on February 5, 2016.
 Signed [Signature] P.L.S. or R.C.E. No.: 7051



COUNTY SURVEYOR'S STATEMENT

This Corner Record was received March 31, 2016 and examined and filed May 9, 2016.
 Signed [Signature] P.L.S. or R.C.E. No.: 4842



Title County Surveyor
 County Surveyor's Comment _____

STATEMENT OF PURPOSE:

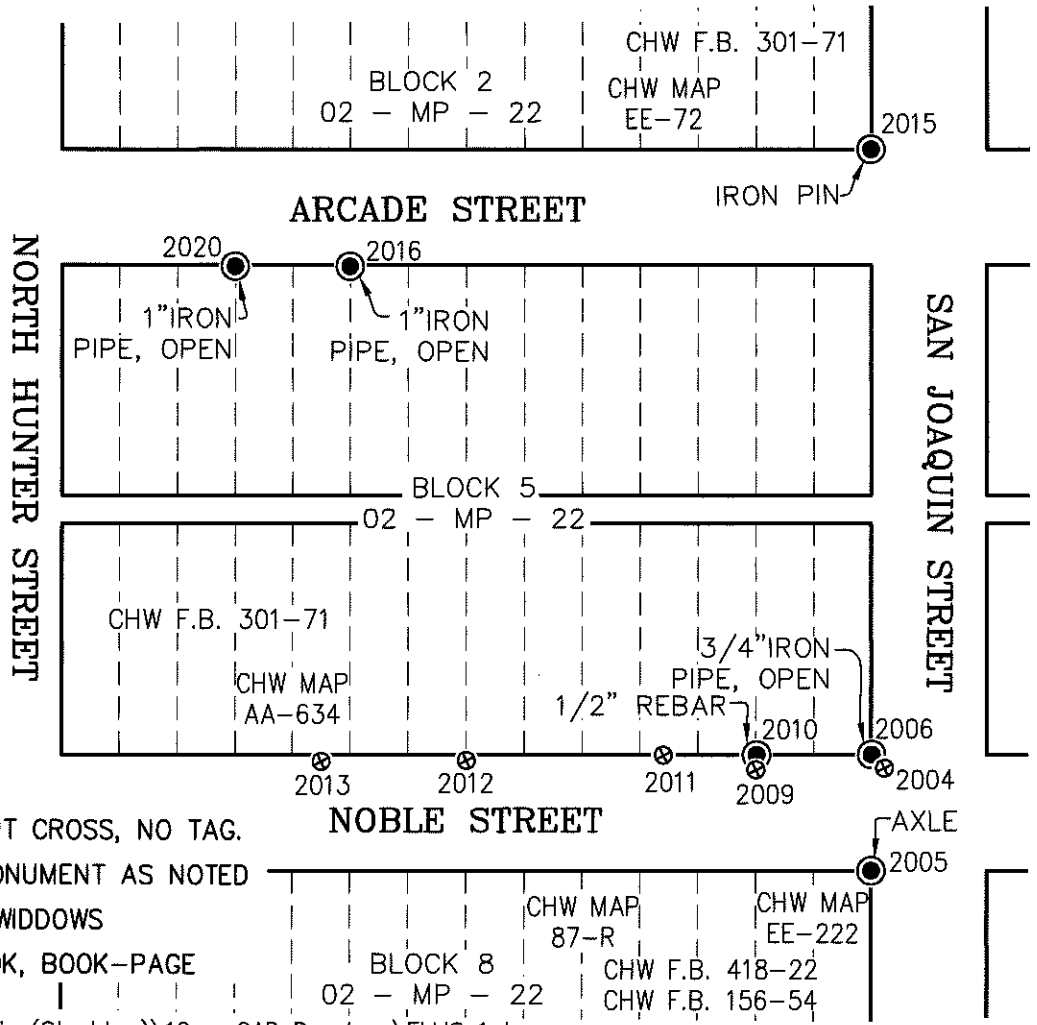
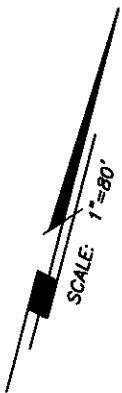
THE PURPOSE OF THIS SURVEY IS TO IDENTIFY AND RECORD THE LOCATION OF EXISTING MONUMENTS PRIOR TO PG&E IMPROVEMENTS. NO CLAIM IS MADE AS TO THE RELATIONSHIP OF THE MONUMENTS SHOWN HEREON TO THE EXISTING PROPERTY LINES. ORIGINAL LOT LINES SHOWN ARE FOR GENERAL LOCATION AND INFORMATIONAL PURPOSES ONLY.

DATUM STATEMENT:

COORDINATES SHOWN HEREON ARE GRID AND ARE BASED ON CITY OF STOCKTON MONUMENTS 1S-4, 2S-2 AND 2S-1, CALIFORNIA COORDINATE SYSTEM (CCS83), ZONE III, 1983 NAD, (1991.35 EPOCH STOCKTON & SAN JOAQUIN COUNTY GPS ADJUSTMENT) AS SHOWN ON RECORD OF SURVEY BOOK 35 OF SURVEYS, PAGE 05. DISTANCES SHOWN ARE GRID. THE PROJECT SPECIFIC SCALE FACTOR IS 0.99993691.

GRID COORDINATES (U.S. SURVEY FEET)		
POINT	NORTHING	EASTING
2004	2179092.99'	6332498.63'
2005	2179047.72'	6332508.11'
2006	2179095.62'	6332493.54'
2009	2179076.94'	6332446.93'
2010	2179080.72'	6332445.80'
2011	2179068.77'	6332407.57'

GRID COORDINATES (U.S. SURVEY FEET)		
POINT	NORTHING	EASTING
2012	2179041.51'	6332326.93'
2013	2179022.70'	6332267.25'
2015	2179345.85'	6332415.92'
2016	2179230.99'	6332215.92'
2020	2179216.22'	6332168.12'



LEGEND:

- ⊗ INDICATES FOUND CUT CROSS, NO TAG.
- INDICATES FOUND MONUMENT AS NOTED
- CHW INDICATES CHAS H. WIDDOWS
- FB INDICATES FIELD BOOK, BOOK-PAGE