

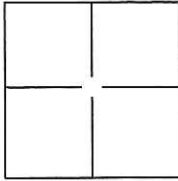
CORNER RECORD

Document Number CR-16-188

City of Stockton

County of San Joaquin, California

Brief Legal Description Block 12, Block 15 and Block 16, South of Mormon Channel, Volume 2 of Maps & Plats, Page 36



CORNER TYPE

Government Corner Control
 Meander Property
 Rancho Other

Date of Survey February 5, 2016

COORDINATES(Optional)

N. _____
 E. _____
 Zone III NAD27 NAD83
 NAD83 Epoch 1991.35
 Elev. _____
 Vert. Datum: NGVD29 NADV88
 Meas. Units: Metric Imperial

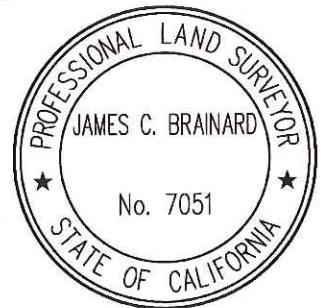
Corner - Left as found Found and tagged Established Reestablished Rebuilt

Identification and type of corner found: Evidence used to identify or procedure used to establish or reestablish the corner:
Established coordinates on all found monuments by the use of G.P.S. and conventional survey methods. Tied all found monuments to the City of Stockton Horizontal Control System. Evidence identification and field procedure in more detail are shown on page 2.

A description of the physical condition of the monument as found and as set or reset: _____
Found cut "X's" in concrete as shown on page 2.

SURVEYOR'S STATEMENT

This Corner Record was prepared by me or under my direction in conformance with the Land Surveyor's Act on February 8, 2016.
 Signed [Signature] P.L.S. or R.C.E. No.: 7051



COUNTY SURVEYOR'S STATEMENT

This Corner Record was received March 31, 2016 and examined and filed May 9, 2016.
 Signed [Signature] P.L.S. or R.C.E. No.: 4842



Title County Surveyor

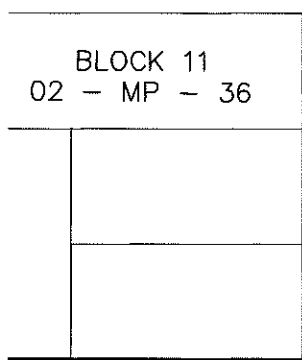
County Surveyor's Comment _____

STATEMENT OF PURPOSE:

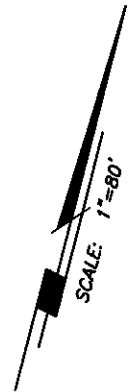
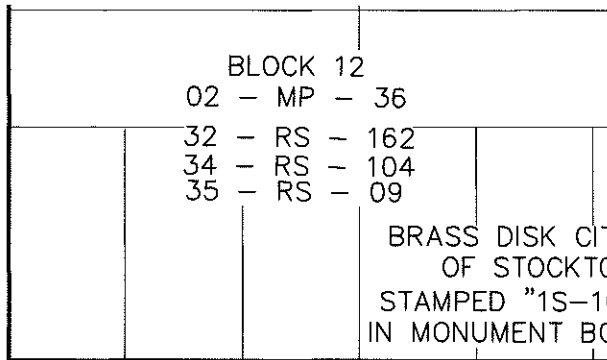
THE PURPOSE OF THIS SURVEY IS TO IDENTIFY AND RECORD THE LOCATION OF EXISTING MONUMENTS PRIOR TO PG&E IMPROVEMENTS. NO CLAIM IS MADE AS TO THE RELATIONSHIP OF THE MONUMENTS SHOWN HEREON TO THE EXISTING PROPERTY LINES. ORIGINAL LOT LINES SHOWN ARE FOR GENERAL LOCATION AND INFORMATIONAL PURPOSES ONLY.

DATUM STATEMENT:

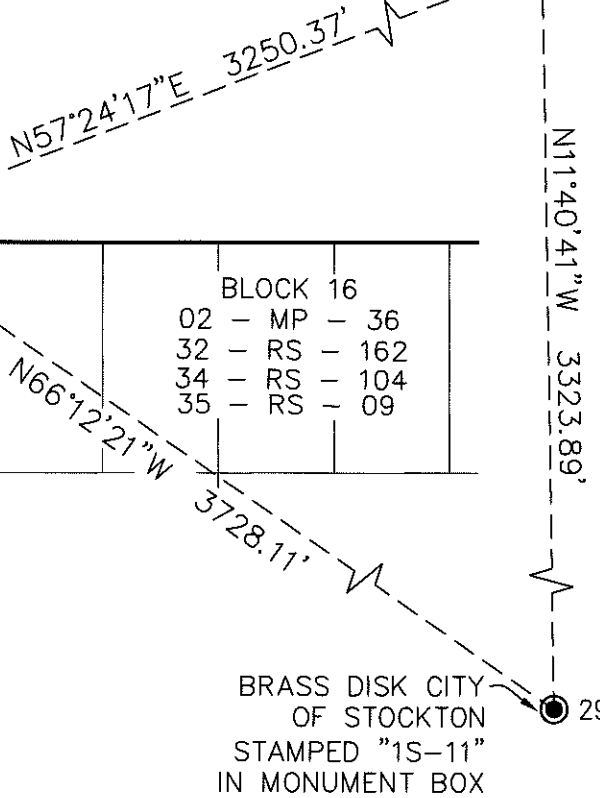
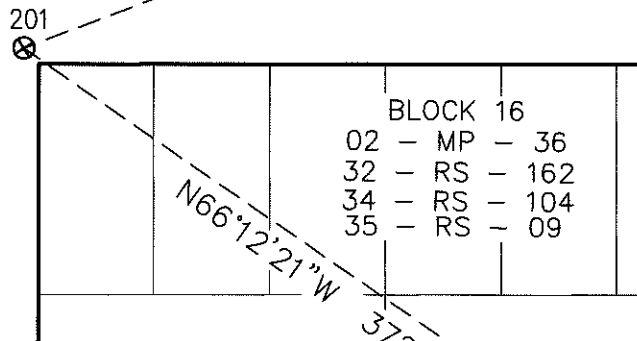
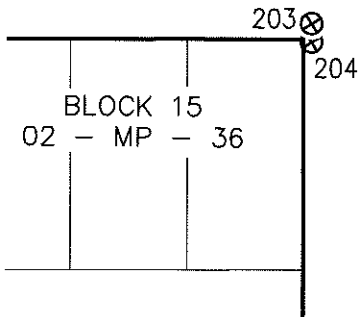
COORDINATES SHOWN HEREON ARE GRID AND ARE BASED ON CITY OF STOCKTON MONUMENTS 28 AND 29, CALIFORNIA COORDINATE SYSTEM (CCS83), ZONE III, 1983 NAD, (1991.35 EPOCH STOCKTON & SAN JOAQUIN COUNTY GPS ADJUSTMENT) AS SHOWN ON RECORD OF SURVEY BOOK 35 OF SURVEYS, PAGE 05. DISTANCES SHOWN ARE GRID. THE PROJECT SPECIFIC SCALE FACTOR IS 0.99993484.



LINCOLN AVENUE



SCOTTS AVE



GRID COORDINATES (U.S. SURVEY FEET)		
POINT	NORTHING	EASTING
28	2169051.25'	6334999.03'
29	2165796.16'	6335671.83'
201	2167300.28'	6332260.60'
202	2167396.11'	6332240.79'
203	2167285.98'	6332191.28'
204	2167278.14'	6332192.89'

LEGEND:

- ⊗ INDICATES FOUND CUT CROSS, NO TAG.
- INDICATES FOUND MONUMENT AS NOTED