

CORNER RECORD

Document Number CR-16-176
County of SAN JOAQUIN, California

City of MANTECA

Brief Legal Description MONUMENTS AT THE SOUTHEAST RETURN OF LOUISE AVENUE AND AGATE AVENUE.
LOCATED IN THE NORTHWEST QUARTER OF SECTION 32, T.1S, R.7E, M.D.B.&M.

NW 1/4	NE 1/4
SW 1/4	SE 1/4

SEC. 32 T.1S, R.7E

CORNER TYPE

Government Corner Control
 Meander Property
 Rancho Other

Date of Survey 3-25-2016

COORDINATES (Optional)

N _____
 E _____
 Zone _____ NAD27 NAD83
 NAD83 Epoch _____
 Elev. _____
 Vert. Datum: NVGD29 NVGD88
 Meas. Units: Metric Imperial

Corner— Left as found Found and tagged Established Reestablished Rebuilt

Identification and type of corner found: Evidence used to identify or procedure used to establish or reestablish the corner:
SET MONUMENTS AS SHOWN ON PAGE 2.

A description of the physical condition of the monument as found and as set or reset:
SET CONCRETE NAILS WITH BRASS TAGS STAMPED L.S. 6953 FROM TIES AS SHOWN ON PAGE 2.

SURVEYOR'S STATEMENT

This Corner Record was prepared by me or under my direction in conformance with
 the Land Surveyors' Act on MARCH 29, 2016,



Signed [Signature] P.L.S. or R.C.E. Number 6953

COUNTY SURVEYOR'S STATEMENT

This Corner Record was received March 31, 2016 and examined
 and filed April 12, 2016



Signed [Signature] P.L.S. or R.C.E. No: 4842

Title County Surveyor

County Surveyor's Comment _____

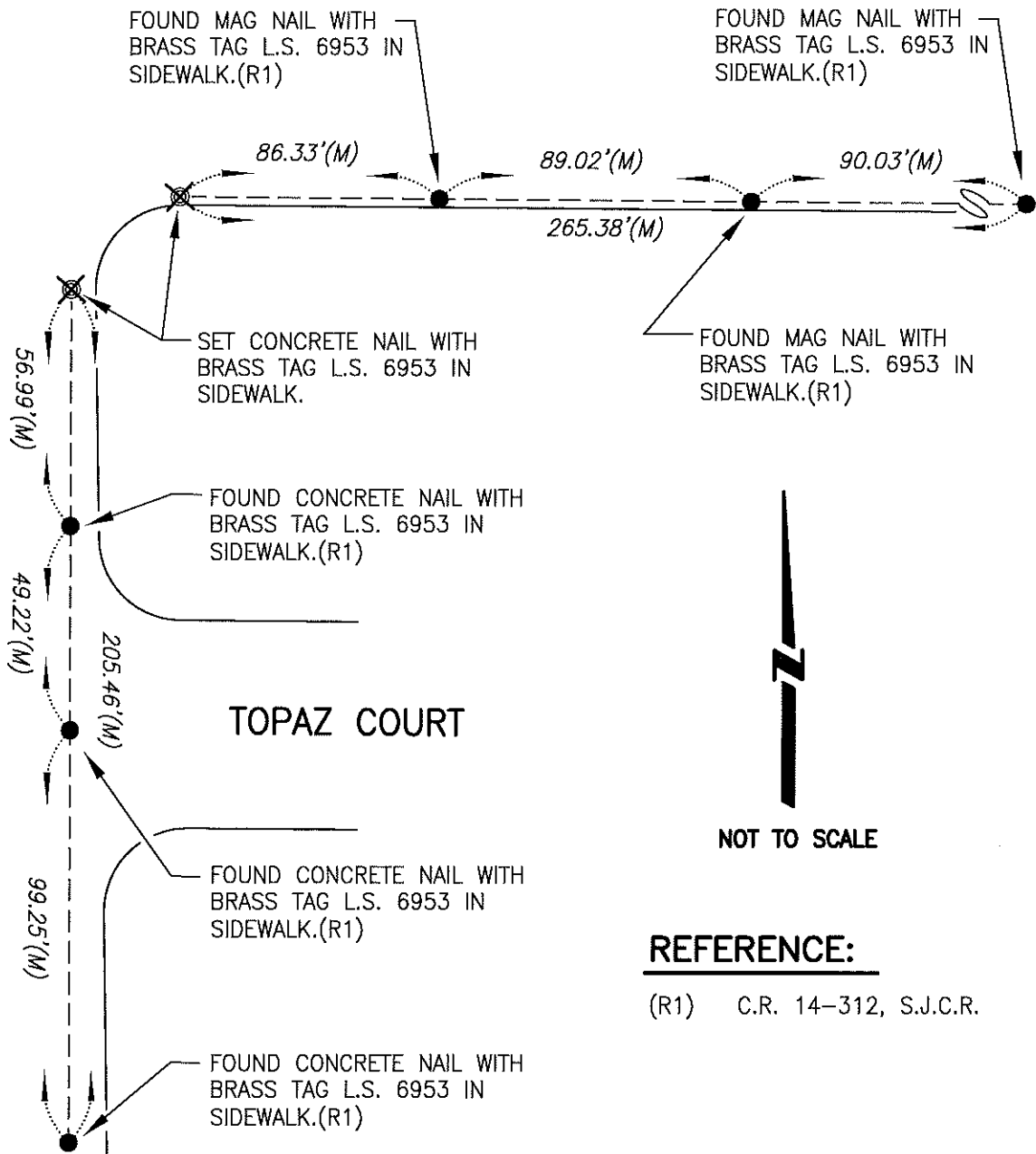
LEGEND:

- ⊗ SET MONUMENT AS NOTED
- FOUND MONUMENT AS NOTED.
- S.J.C.R. DENOTES SAN JOAQUIN COUNTY RECORDS
- C.R. DENOTES CORNER RECORD
- (M) MEASURED DISTANCE. ALL DISTANCES ARE MEASURED UNLESS NOTED OTHERWISE.

LOUISE AVENUE

AGATE AVENUE

TOPAZ COURT



FOUND MAG NAIL WITH BRASS TAG L.S. 6953 IN SIDEWALK.(R1)

FOUND MAG NAIL WITH BRASS TAG L.S. 6953 IN SIDEWALK.(R1)

SET CONCRETE NAIL WITH BRASS TAG L.S. 6953 IN SIDEWALK.

FOUND CONCRETE NAIL WITH BRASS TAG L.S. 6953 IN SIDEWALK.(R1)

FOUND CONCRETE NAIL WITH BRASS TAG L.S. 6953 IN SIDEWALK.(R1)

FOUND CONCRETE NAIL WITH BRASS TAG L.S. 6953 IN SIDEWALK.(R1)



NOT TO SCALE

REFERENCE:

(R1) C.R. 14-312, S.J.C.R.