

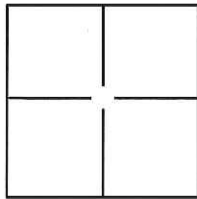
CORNER RECORD

Document Number CR-16-147

City of Stockton

County of San Joaquin, California

Brief Legal Description Projection of North line of Lot 80, 26 M.P. 61 at the NE corner thereof.



CORNER TYPE

Government Corner Control
 Meander Property
 Rancho Other

Date of Survey August 9, 2016

COORDINATES(Optional)

N. _____
 E. _____
 Zone _____ NAD27 NAD83
 NAD83 Epoch _____
 Elev. _____
 Vert. Datum: NGVD29 NADV88
 Meas. Units: Metric Imperial

Corner - Left as found Found and tagged Established Reestablished Rebuilt

Identification and type of corner found: Evidence used to identify or procedure used to establish or reestablish the corner:

The cut cross was located and reference points were set prior to the removal of the concrete sidewalk. Once the sidewalk was replaced a 1" brass disc was set in the original location based on the reference points.

A description of the physical condition of the monument as found and as set or reset: Found cut cross in concrete sidewalk and set 1" brass disc stamped "LS 6947".

SURVEYOR'S STATEMENT

This Corner Record was prepared by me or under my direction in conformance with the Land Surveyor's Act on August 9, 2016.

Signed [Signature] P.L.S. or R.C.E. No.: L.S. 6947



COUNTY SURVEYOR'S STATEMENT

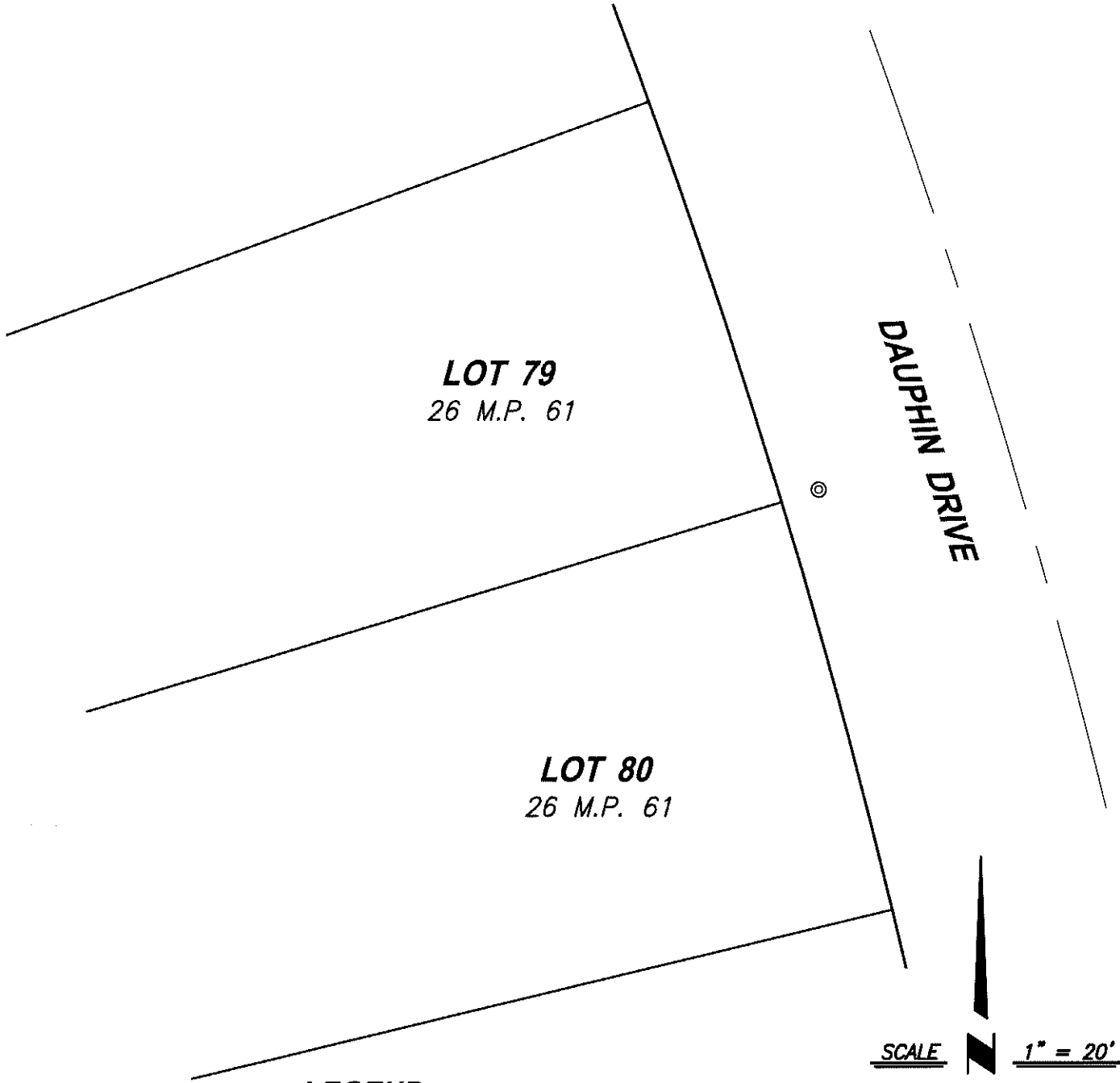
This Corner Record was received August 11, 2016 and examined and filed August 19, 2016.

Signed [Signature] P.L.S. or R.C.E. No.: 4842

Title County Surveyor

County Surveyor's Comment _____





LOT 79
26 M.P. 61

LOT 80
26 M.P. 61

DAUPHIN DRIVE

SCALE  1" = 20'

LEGEND:

⊙ — — REPLACED CUT CROSS WITH 1" BRASS DISC "LS
6947" IN SIDEWALK AT PROJECTION OF LOT LINE

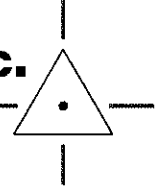
M.P. — — MAPS & PLATS

NOTE: NO ATTEMPT WAS MADE TO VERIFY MONUMENT

CenterPoint Engineering, Inc.

Civil Engineering & Land Surveying

1217 Pleasant Grove Blvd. Suite 130 • Roseville, CA • 95878
Phone: 916-773-4006 Fax: 916-773-4498



DRAWN BY: BB

CHECKED BY: MH

SHEET: 2 OF 2

SCALE: 1" = 20'

DATE: 8-9-2016