

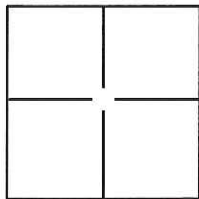
# CORNER RECORD

Document Number CR-16-144

City of Stockton

County of San Joaquin, California

Brief Legal Description Projection of North & South lines of Lot 216, 25 M.P. 68 at the W ends thereof.



### CORNER TYPE

Government Corner  Control   
 Meander  Property   
 Rancho  Other

Date of Survey August 9, 2016

### COORDINATES(Optional)

N. \_\_\_\_\_  
 E. \_\_\_\_\_  
 Zone \_\_\_\_\_ NAD27  NAD83   
 NAD83 Epoch \_\_\_\_\_  
 Elev. \_\_\_\_\_  
 Vert. Datum: NGVD29  NADV88   
 Meas. Units: Metric  Imperial

Corner - Left as found  Found and tagged  Established  Reestablished  Rebuilt

Identification and type of corner found: Evidence used to identify or procedure used to establish or reestablish the corner:

The cut crosses were located and reference points were set prior to the removal of the concrete sidewalk. Once the sidewalk was replaced a 1" brass disc was set in the original locations based on the reference points.

A description of the physical condition of the monument as found and as set or reset: Found cut crosses in concrete sidewalk and set 1" brass disc stamped "LS 6947"

### SURVEYOR'S STATEMENT

This Corner Record was prepared by me or under my direction in conformance with the Land Surveyor's Act on August 9, 2016.

Signed [Signature] P.L.S. or R.C.E. No.: L.S. 6947



### COUNTY SURVEYOR'S STATEMENT

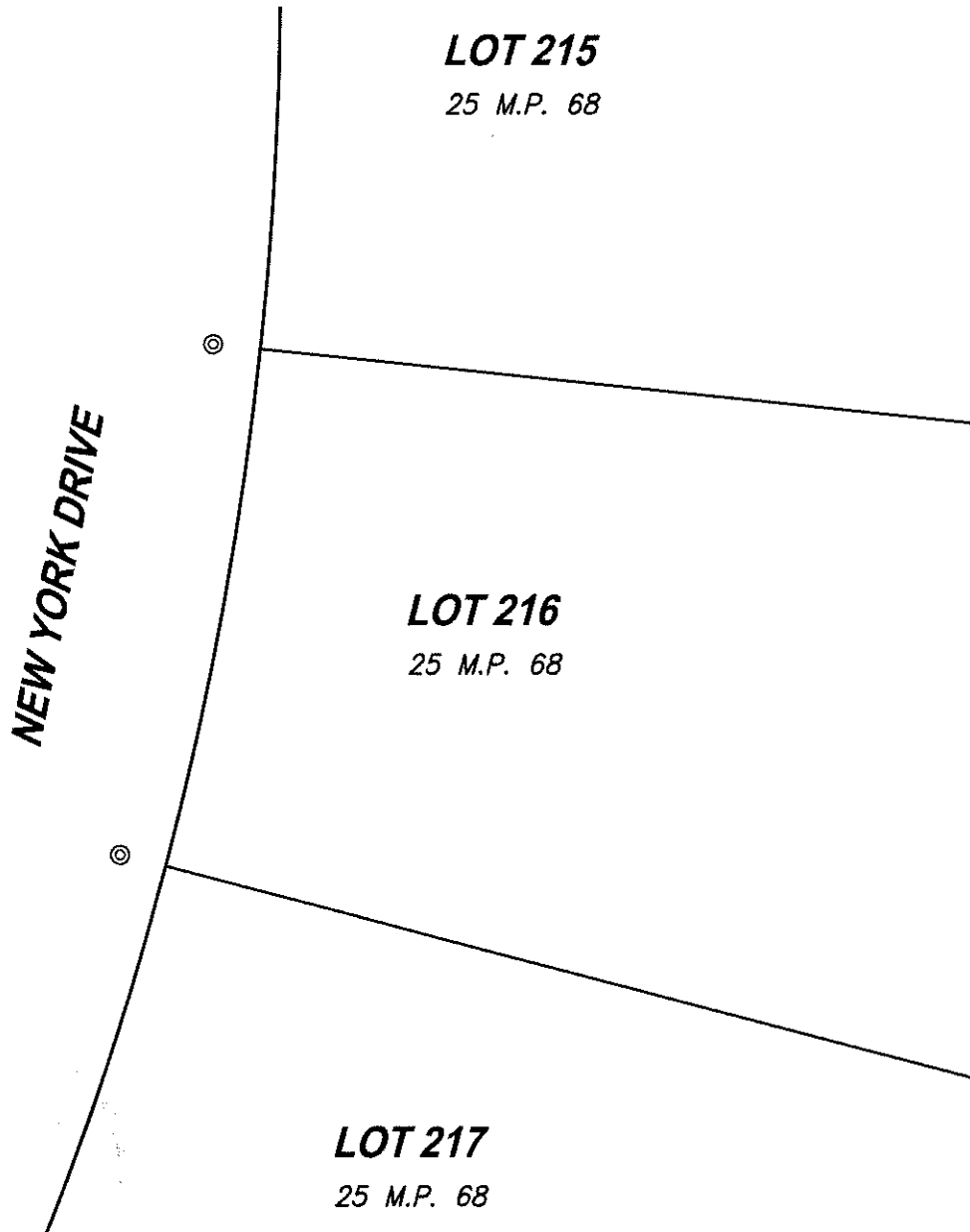
This Corner Record was received August 11, 2016 and examined and filed August 19, 2016.

Signed [Signature] P.L.S. or R.C.E. No.: 4842

Title County Surveyor

County Surveyor's Comment \_\_\_\_\_





**LOT 215**

25 M.P. 68

**LOT 216**

25 M.P. 68

**LOT 217**

25 M.P. 68

**NEW YORK DRIVE**

**LEGEND:**

⊙ - - - REPLACED CUT CROSS WITH 1" BRASS DISC "LS 6947" IN SIDEWALK AT PROJECTION OF LOT LINE

M.P. - - - MAPS & PLATS

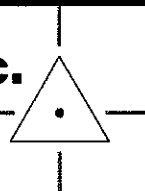
SCALE  1" = 20'

NOTE: NO ATTEMPT WAS MADE TO VERIFY MONUMENT

**CenterPoint Engineering, Inc.**

Civil Engineering & Land Surveying

1217 Pleasant Grove Blvd. Suite 130 • Roseville, CA • 95678  
Phone: 916-773-4006 Fax: 916-773-4498



DRAWN BY: BB

CHECKED BY: MH

SHEET: 2 OF 2

SCALE: 1" = 20'

DATE: 8-9-2016

FILE: K:\166400\SURVEY\SYSTEM 70\CORNER RECORDS.DWG