

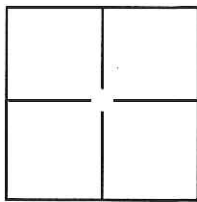
CORNER RECORD

Document Number CR-16-131

City of Stockton

County of San Joaquin, California

Brief Legal Description Projection of Southwest line of Lot 132, 26 M.P. 61 at the SW corner thereof.



CORNER TYPE

Government Corner Control
 Meander Property
 Rancho Other

Date of Survey August 9, 2016

COORDINATES(Optional)

N. _____
 E. _____
 Zone _____ NAD27 NAD83
 NAD83 Epoch _____
 Elev. _____
 Vert. Datum: NGVD29 NADV88
 Meas. Units: Metric Imperial

Corner - Left as found Found and tagged Established Reestablished Rebuilt

Identification and type of corner found: Evidence used to identify or procedure used to establish or reestablish the corner:

The Southwest line of Lot 132 was established based on found centerline monuments and record data per 26 M.P.61.

A description of the physical condition of the monument as found and as set or reset: Set 1" brass disc stamped "LS 6947" in concrete sidewalk at five foot projection of lot line.

SURVEYOR'S STATEMENT

This Corner Record was prepared by me or under my direction in conformance with the Land Surveyor's Act on August 9, 2016.

Signed [Signature] P.L.S. or R.C.E. No.: L.S. 6947



COUNTY SURVEYOR'S STATEMENT

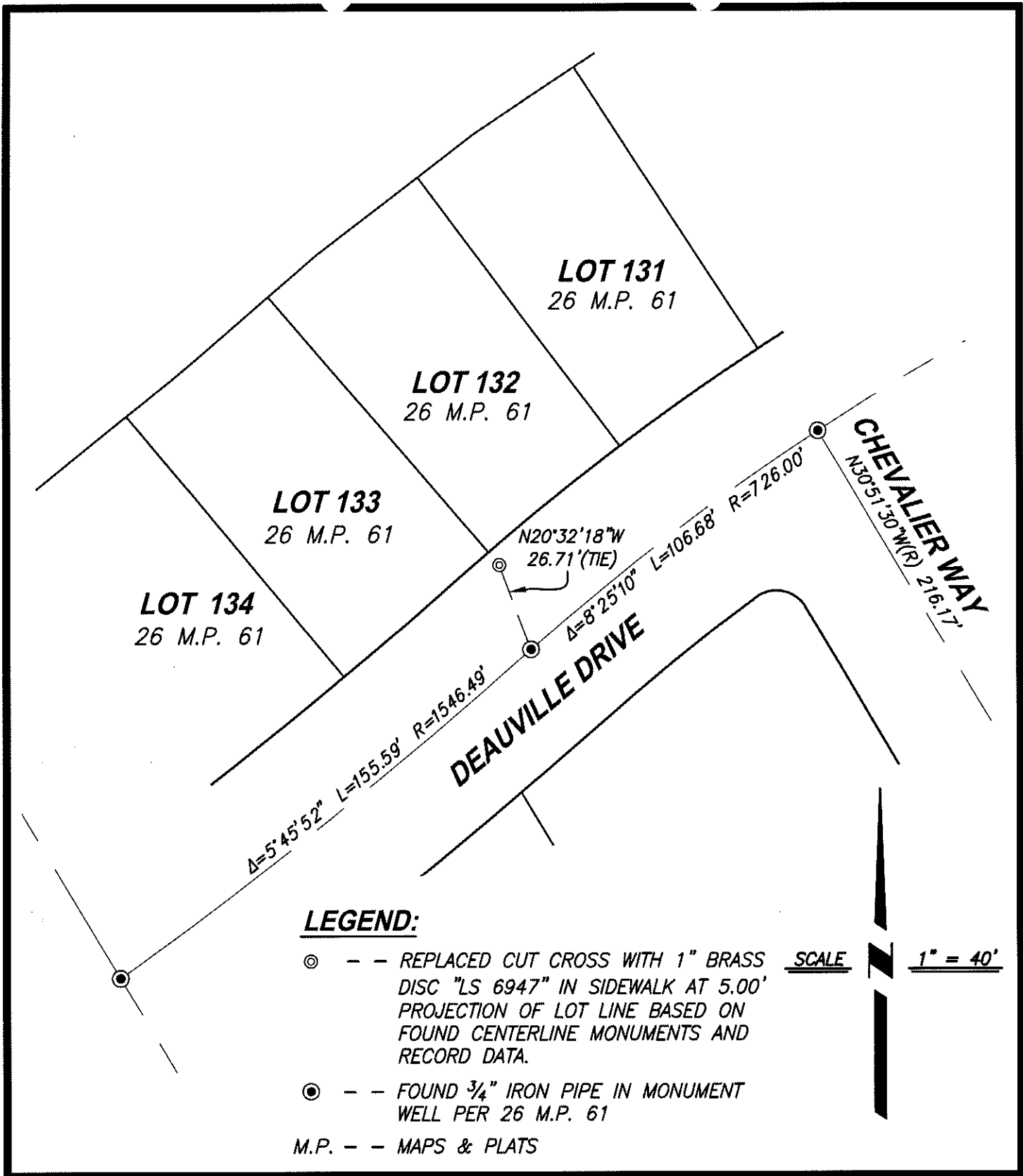
This Corner Record was received August 11, 2016 and examined and filed August 19, 2016.

Signed [Signature] P.L.S. or R.C.E. No.: 4842

Title County Surveyor

County Surveyor's Comment _____





LEGEND:

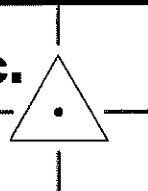
- ⊙ -- REPLACED CUT CROSS WITH 1" BRASS DISC "LS 6947" IN SIDEWALK AT 5.00' PROJECTION OF LOT LINE BASED ON FOUND CENTERLINE MONUMENTS AND RECORD DATA.
- ⊙ -- FOUND 3/4" IRON PIPE IN MONUMENT WELL PER 26 M.P. 61
- M.P. -- MAPS & PLATS

SCALE 1" = 40'



CenterPoint Engineering, Inc.

Civil Engineering & Land Surveying
 1217 Pleasant Grove Blvd. Suite 130 • Roseville, CA • 95678
 Phone: 916-773-4006 Fax: 916-773-4498



DRAWN BY: BB

CHECKED BY: MH

SHEET: 2 OF 2

SCALE: 1" = 40'

DATE: 8-9-2016