

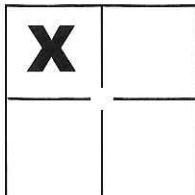
CORNER RECORD

Document Number CR-116-129

City of Stockton

County of San Joaquin, California

Brief Legal Description Northwest corner of Lot 685 per M. & P. 25-107



CORNER TYPE

Government Corner Control
Meander Property
Rancho Other

COORDINATES(Optional)

N. _____
E. _____
Zone _____ NAD27 NAD83
NAD83 Epoch _____
Elev. _____
Vert. Datum: NGVD29 NADV88
Meas. Units: Metric Imperial

Sec. 7, T.2N., R.6E.,
M.D.B. & M.

Date of Survey February 4, 2016

Corner - Left as found Found and tagged Established Reestablished Rebuilt

Identification and type of corner found: Evidence used to identify or procedure used to establish or reestablish the corner:

See Sheet 2

A description of the physical condition of the monument as found and as set or reset: _____

This is the Pre-Construction Corner Record

See Sheet 2

SURVEYOR'S STATEMENT

This Corner Record was prepared by me or under my direction in conformance with the Land Surveyor's Act on Feb. 29, 2016.

Signed Michael L. Quarantaro P.L.S. or R.C.E. No.: L.S. 4450



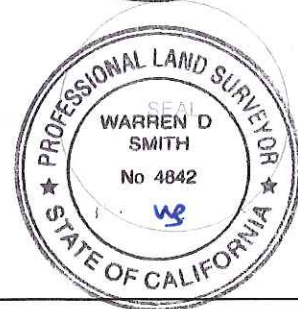
COUNTY SURVEYOR'S STATEMENT

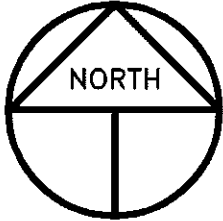
This Corner Record was received March 1, 2016 and examined and filed March 23, 2016.

Signed Warren D. Smith P.L.S. or R.C.E. No.: 4842

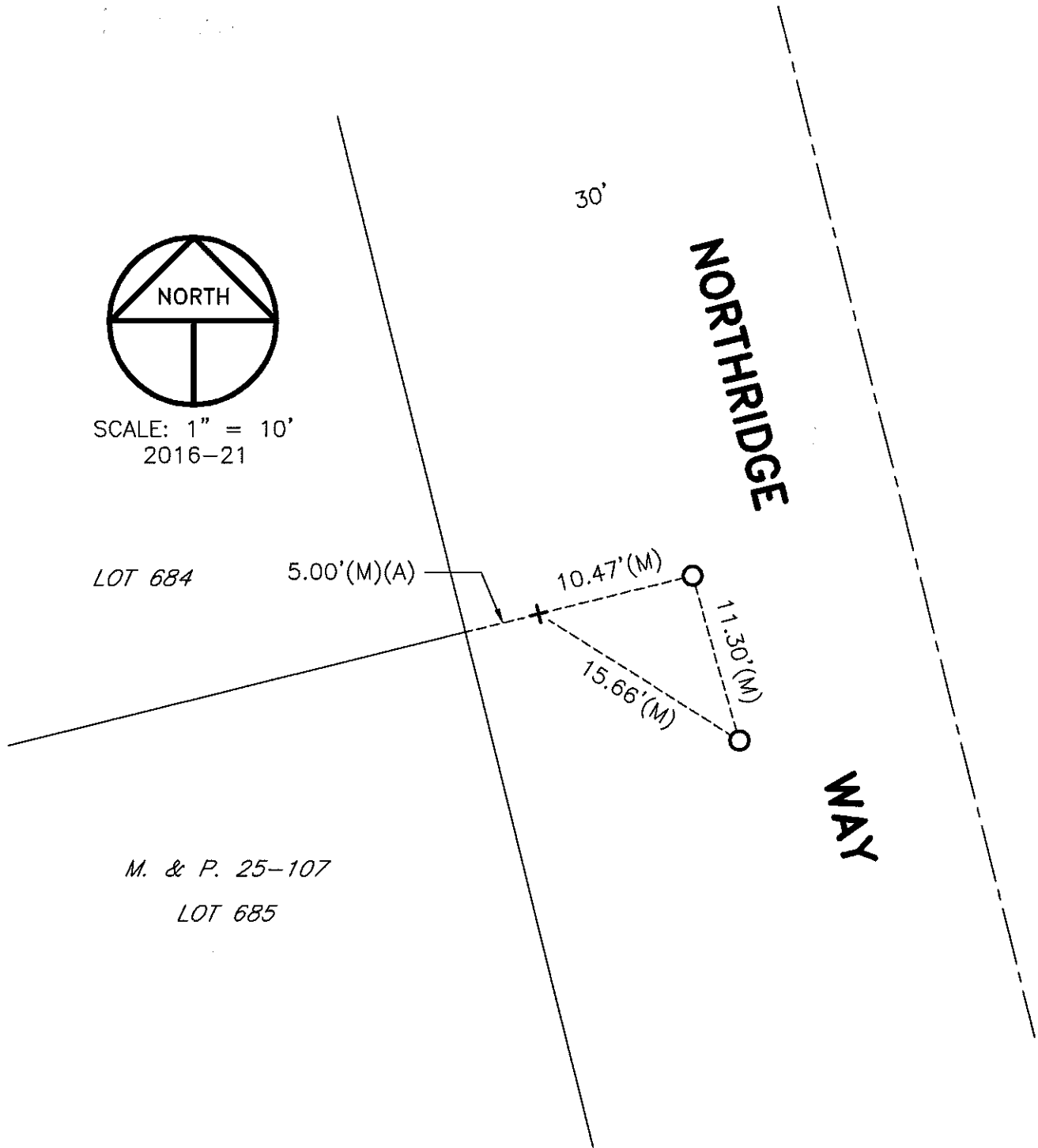
Title Acting County Surveyor

County Surveyor's Comment _____





SCALE: 1" = 10'
2016-21



REFERENCE

(A) M. & P. 25-107, S.J.C.R.

LEGEND

- + INDICATES FOUND CHISELED CROSS WITNESS CORNER PER (A)
- INDICATES SET MAGNETIC NAIL W/BRASS TAG STAMPED LS 4450
- M. & P. INDICATES MAPS AND PLATS, VOLUME AND PAGE, S.J.C.R.
- S.J.C.R. INDICATES SAN JOAQUIN COUNTY RECORDS
- (M) INDICATES MEASURED ON THIS SURVEY