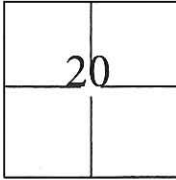


CORNER RECORD

Document Number CR-16-107
City of Tracy County of San Joaquin, California

Brief Legal Description Tract 1011, Meadow Glen Unit 2, Book 20 of Maps & Plats, Page 26.



CORNER TYPE

Government Corner Control
Meander Property
Rancho Other

Date of Survey November 9, 2015

COORDINATES(Optional)

N. _____
E. _____
Zone III NAD27 NAD83
NAD83 Epoch 1991.35
Elev. _____
Vert. Datum: NGVD29 NADV88
Meas. Units: Metric Imperial

T.2S., R.5E., MDB&M

Corner - Left as found Found and tagged Established Reestablished Rebuilt

Identification and type of corner found: Evidence used to identify or procedure used to establish or reestablish the corner:

Used G.P.S. to locate the centerline monuments. Found cut "X"s at lot line projections and used total station set up on centerline monuments to establish location of each found cut "X".

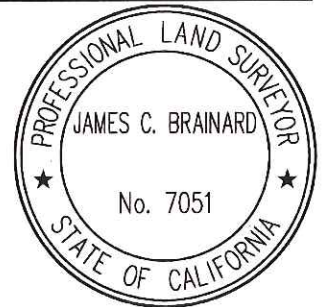
A description of the physical condition of the monument as found and as set or reset:

Found cut "X"s in concrete, along the approximate property line extended into the right of way, approximately 9.5 feet from lot corners. Also, found 2 1/2" illegible brass disks as shown on page 2.

SURVEYOR'S STATEMENT

This Corner Record was prepared by me or under my direction in conformance with the Land Surveyor's Act on November 19, 2015.

Signed [Signature] P.L.S. or R.C.E. No.: 7051



COUNTY SURVEYOR'S STATEMENT

This Corner Record was received January 11, 2016 and examined and filed February 9, 2016.

Signed [Signature] P.L.S. or R.C.E. No.: 4842

Title Acting County Surveyor

County Surveyor's Comment _____



STATEMENT OF PURPOSE:

THE PURPOSE OF THIS SURVEY IS TO IDENTIFY AND RECORD THE LOCATION OF EXISTING MONUMENTS PRIOR TO THE CONSTRUCTION OF PG&E FACILITIES AROUND THE MONUMENTS. THE PURPOSE OF THIS SURVEY IS NOT TO MAKE PROPERTY LINE DETERMINATIONS. LOT LINES SHOWN HEREON ARE FOR GENERAL LOCATION AND INFORMATIONAL PURPOSES ONLY.

LEGEND:

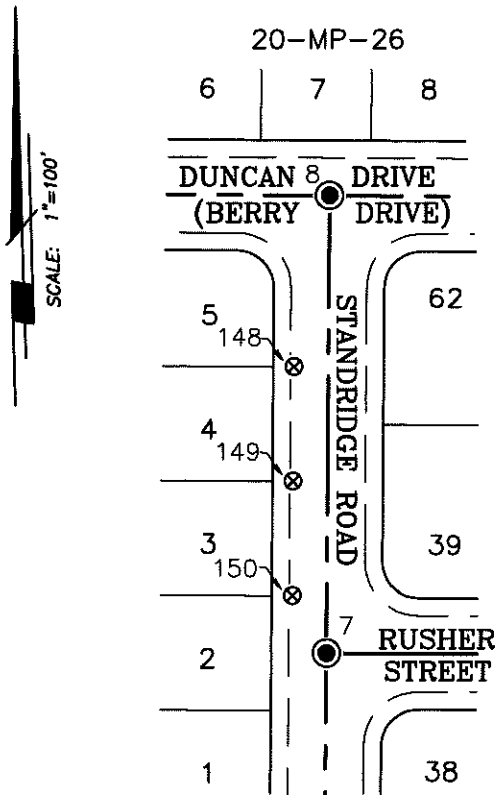
- ⊗ INDICATES FOUND CUT CROSS, NO TAG.
- INDICATES 2 1/2" ILLEGIBLE BRASS DISK

DATUM STATEMENT:

COORDINATES SHOWN HEREON ARE GRID AND ARE BASED ON CITY OF TRACY MONUMENTS 2022 AND 2076, CALIFORNIA COORDINATE SYSTEM (CCS83), ZONE III, 1983 NAD, (1991.35 EPOCH TRACY & SAN JOAQUIN COUNTY GPS ADJUSTMENT) AND SHOWN ON RECORD OF SURVEY BOOK 36 OF SURVEYS, PAGE 118. THE PROJECT SPECIFIC COMBINED SCALE FACTOR IS 0.99992920.

NOTE:

FIELD EFFORT INCLUDED A SEARCH FOR EXISTING CUT CROSSES AT THEIR TYPICAL LOCATION, ONLY THOSE FOUND ARE SHOWN.



GRID COORDINATES (U.S. SURVEY FEET)		
POINT	NORTHING	EASTING
7	2097748.30'	6289150.36'
8	2097996.26'	6289151.97'
148	2097903.44'	6289132.75'
149	2097841.42'	6289132.27'
150	2097779.42'	6289131.81'