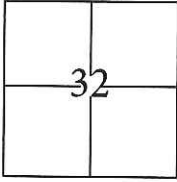


CORNER RECORD

Document Number CR-16-97
County of San Joaquin, California

City of Manteca

Brief Legal Description Franciscan Village, Unit No. 1, Volume 20 of Maps & Plats, Page 34.



CORNER TYPE

Government Corner Control
Meander Property
Rancho Other

COORDINATES(Optional)

N. _____
E. _____
Zone III NAD27 NAD83
NAD83 Epoch _____
Elev. _____
Vert. Datum: NGVD29 NADV88
Meas. Units: Metric Imperial

T. 1 S., R. 7 E., M.D.B. & M.

Date of Survey November 4, 2015

Corner - Left as found Found and tagged Established Reestablished Rebuilt

Identification and type of corner found; Evidence used to identify or procedure used to establish or reestablish the corner:

Used G.P.S. to locate the centerline monuments. Found cut "X"s at lot line projections and used total station set up on centerline monuments to establish location of each found cut "X".

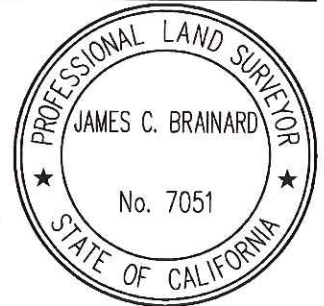
A description of the physical condition of the monument as found and as set or reset:

Found cut "X"s in concrete, along the approximate property line extended into the right of way, approximately 4 feet from lot corners. Also, found 3/4" iron pins tagged R.C.E. 14269 in monument wells as shown on page 2.

SURVEYOR'S STATEMENT

This Corner Record was prepared by me or under my direction in conformance with the Land Surveyor's Act on November 9, 2015.

Signed [Signature] P.L.S. or R.C.E. No.: 7051



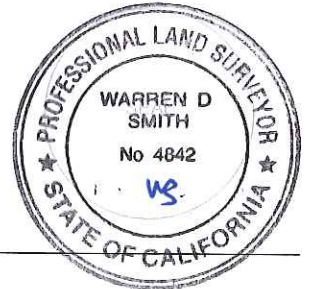
COUNTY SURVEYOR'S STATEMENT

This Corner Record was received January 11, 2016 and examined and filed February 9, 2016.

Signed [Signature] P.L.S. or R.C.E. No.: 4842

Title Acting County Surveyor

County Surveyor's Comment _____



STATEMENT OF PURPOSE:

THE PURPOSE OF THIS SURVEY IS TO IDENTIFY AND RECORD THE LOCATION OF EXISTING MONUMENTS PRIOR TO THE CONSTRUCTION OF PG&E FACILITIES AROUND THE MONUMENTS. THE PURPOSE OF THIS SURVEY IS NOT TO MAKE PROPERTY LINE DETERMINATIONS. LOT LINES SHOWN HEREON ARE FOR GENERAL LOCATION AND INFORMATIONAL PURPOSES ONLY.

LEGEND:

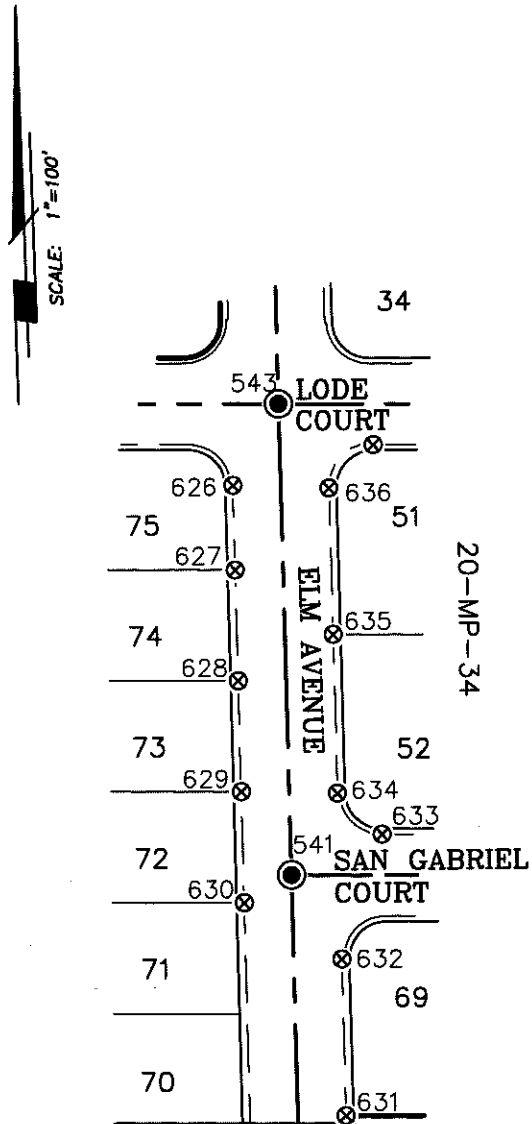
- ⊗ INDICATES FOUND CUT CROSS, NO TAG.
- INDICATES FOUND 3/4" IRON PIN TAGGED RCE 14269

DATUM STATEMENT:

COORDINATES SHOWN HEREON ARE GRID AND ARE BASED ON CITY OF MANTECA MONUMENTS 233 AND 234, CALIFORNIA COORDINATE SYSTEM (CCS83), ZONE III, 1983 NAD, (1991.35 EPOCH MANTECA & SAN JOAQUIN COUNTY GPS ADJUSTMENT) AND SHOWN ON RECORD OF SURVEY BOOK 33 OF SURVEYS, PAGE 133. THE PROJECT SPECIFIC COMBINED SCALE FACTOR IS 0.99992972.

NOTE:

FIELD EFFORT INCLUDED A SEARCH FOR EXISTING CUT CROSSES AT THEIR TYPICAL LOCATION, ONLY THOSE FOUND ARE SHOWN.



GRID COORDINATES (U.S. SURVEY FEET)		
POINT	NORTHING	EASTING
541	2117977.39'	6352638.13'
543	2118232.28'	6352633.03'
626	2118188.31'	6352607.98'
627	2118142.57'	6352608.85'
628	2118082.53'	6352610.06'
629	2118022.53'	6352611.27'
630	2117962.49'	6352612.47'
631	2117847.20'	6352666.76'
632	2117931.67'	6352664.96'
633	2117998.98'	6352686.99'
634	2118021.38'	6352663.22'
635	2118107.10'	6352661.55'
636	2118186.56'	6352659.81'