

# CORNER RECORD

Document Number CR-16-70  
 City of Stockton County of San Joaquin, California

Brief Legal Description Le Blanc Villa, Unit No. 2, Volume 20 of Maps & Plats, Page 28 and Colonial Estates, Unit No. 6, Volume 20 of Maps & Plats, Page 74.

18	17

### CORNER TYPE

Government Corner  Control   
 Meander  Property   
 Rancho  Other

Date of Survey October 29, 2015

### COORDINATES(Optional)

N. \_\_\_\_\_  
 E. \_\_\_\_\_  
 Zone III NAD27  NAD83   
 NAD83 Epoch 1991.35  
 Elev. \_\_\_\_\_  
 Vert. Datum: NGVD29  NADV88   
 Meas. Units: Metric  Imperial

T. 2 N., R. 6 E., M.D.B.&M.

Corner - Left as found  Found and tagged  Established  Reestablished  Rebuilt

Identification and type of corner found: Evidence used to identify or procedure used to establish or reestablish the corner:  
Used G.P.S. to locate the centerline monuments. Found cut "X"s at lot line projections and used total station set up on centerline monuments to establish location of each found cut "X".

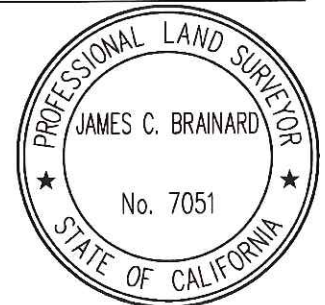
A description of the physical condition of the monument as found and as set or reset:  
Found cut "X"s in concrete, along the approximate property line extended into the right of way, approximately 5 feet from lot corners. Also, found 3/4" iron pipes tagged R.C.E. 15831 in monument wells as shown on page 2.

### SURVEYOR'S STATEMENT

This Corner Record was prepared by me or under my direction in conformance with

the Land Surveyors Act on November 5, 2015.

Signed [Signature] P.L.S. or R.C.E. No.: 7051



### COUNTY SURVEYOR'S STATEMENT

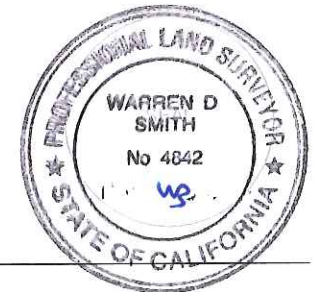
This Corner Record was received January 11, 2016 and examined

and filed February 9, 2016.

Signed [Signature] P.L.S. or R.C.E. No.: 4842

Title Acting County Surveyor

County Surveyor's Comment \_\_\_\_\_



## STATEMENT OF PURPOSE:

THE PURPOSE OF THIS SURVEY IS TO IDENTIFY AND RECORD THE LOCATION OF EXISTING MONUMENTS PRIOR TO THE CONSTRUCTION OF PG&E FACILITIES AROUND THE MONUMENTS. THE PURPOSE OF THIS SURVEY IS NOT TO MAKE PROPERTY LINE DETERMINATIONS. LOT LINES SHOWN HEREON ARE FOR GENERAL LOCATION AND INFORMATIONAL PURPOSES ONLY.

## LEGEND:

- ⊗ INDICATES FOUND CUT CROSS, NO TAG.
- INDICATES 3/4" IRON PIPE TAGGED 15831 IN MONUMENT WELL
- INDICATES SEARCHED FOR RECORD MONUMENT, NOT FOUND

## DATUM STATEMENT:

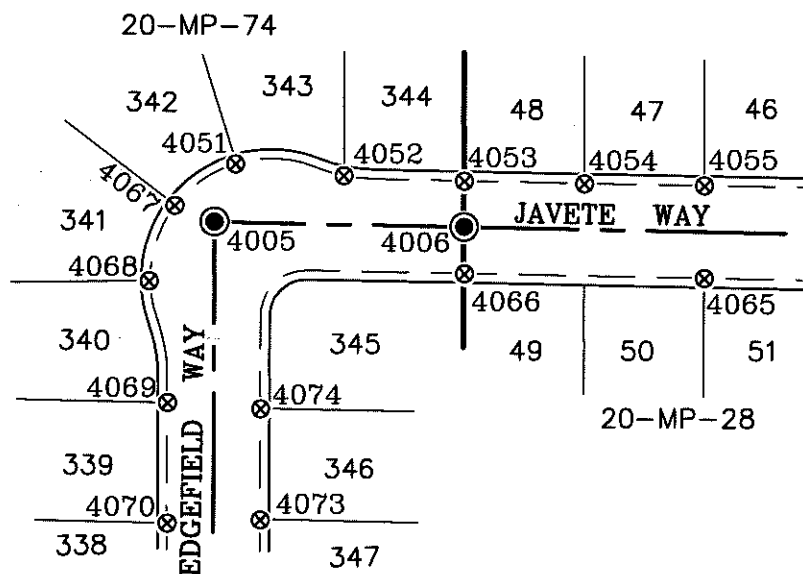
COORDINATES SHOWN HEREON ARE GRID AND ARE BASED ON CITY OF STOCKTON MONUMENTS 4N-16 AND 1N-7, CALIFORNIA COORDINATE SYSTEM (CCS83), ZONE III, 1983 NAD, (1991.35 EPOCH STOCKTON & SAN JOAQUIN COUNTY GPS ADJUSTMENT) AND SHOWN ON RECORD OF SURVEY BOOK 33 OF SURVEYS, PAGE 20. THE PROJECT SPECIFIC COMBINED SCALE FACTOR IS 0.99994066.

## NOTE:

FIELD EFFORT INCLUDED A SEARCH FOR EXISTING CUT CROSSES AT THEIR TYPICAL LOCATION, ONLY THOSE FOUND ARE SHOWN.

GRID COORDINATES (U.S. SURVEY FEET)		
POINT	NORTHING	EASTING
4005	2197846.85'	6316678.27'
4006	2197844.53'	6316813.31'
4051	2197878.50'	6316689.21'
4052	2197872.23'	6316747.98'
4053	2197869.64'	6316813.25'
4054	2197868.45'	6316878.17'
4055	2197867.39'	6316943.18'
4065	2197817.46'	6316943.29'
4066	2197819.64'	6316813.48'

GRID COORDINATES (U.S. SURVEY FEET)		
POINT	NORTHING	EASTING
4067	2197855.89'	6316656.63'
4068	2197815.19'	6316643.26'
4069	2197749.43'	6316653.56'
4070	2197684.40'	6316653.66'
4073	2197686.24'	6316703.71'
4074	2197746.24'	6316703.56'



SCALE: 1"=100'