

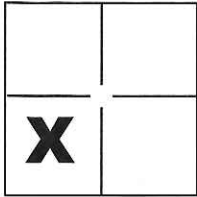
CORNER RECORD

Document Number CR-16-26

City of _____

County of San Joaquin, California

Brief Legal Description South line of 5.578 Ac. Parcel and portion of South line of 4.025 Acre Parcel as shown on R.S. 13-22, S.J.C.R.



CORNER TYPE

Government Corner Control
Meander Property
Rancho Other

COORDINATES(Optional)

N. _____
E. _____
Zone _____ NAD27 NAD83
NAD83 Epoch _____
Elev. _____
Vert. Datum: NGVD29 NADV88
Meas. Units: Metric Imperial

Sec. 5 T.3N., R.7E.,
M.D.B. & M.

Date of Survey January 2, 2000

Corner - Left as found Found and tagged Established Reestablished Rebuilt

Identification and type of corner found: Evidence used to identify or procedure used to establish or reestablish the corner:

See Sheet 2

A description of the physical condition of the monument as found and as set or reset: _____

See Sheet 2

SURVEYOR'S STATEMENT

This Corner Record was prepared by me or under my direction in conformance with the Land Surveyor's Act on JAN 21, 2016.

Signed Michael L. Quarfaro P.L.S. or R.C.E. No.: L.S. 4450



COUNTY SURVEYOR'S STATEMENT

This Corner Record was received January 29, 2016 and examined and filed February 1, 2016.

Signed Warren D. Smith P.L.S. or R.C.E. No.: 4842

Title Acting County Surveyor

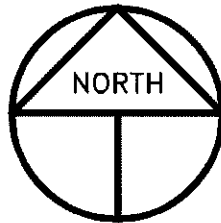
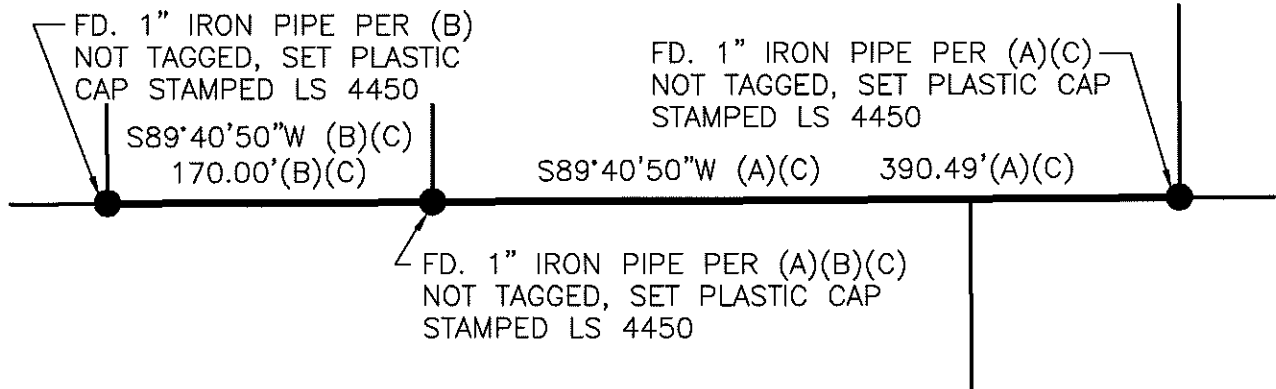
County Surveyor's Comment _____



R.S. 26-182

R.S. 15-104

R.S. 13-22



SCALE: 1" = 100'
2000-18

LEGEND

- INDICATES FOUND AS NOTED
- FD. INDICATES FOUND
- R.S. INDICATES RECORD OF SURVEY, BOOK AND PAGE, S.J.C.R.
- S.J.C.R. INDICATES SAN JOAQUIN COUNTY RECORDS

REFERENCES

- (A) R.S. 13-22, S.J.C.R.
- (B) R.S. 15-104, S.J.C.R.
- (C) R.S. 26-182, S.J.C.R.