

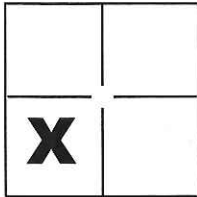
CORNER RECORD

Document Number CR-16-20

City of _____

County of San Joaquin, California

Brief Legal Description Monument Name P553 as shown on R.S. 36-154, S.J.C.R.



CORNER TYPE

Government Corner Control
 Meander Property
 Rancho Other

COORDINATES(Optional)

N. _____
 E. _____
 Zone _____ NAD27 NAD83
 NAD83 Epoch _____
 Elev. _____
 Vert. Datum: NGVD29 NADV88
 Meas. Units: Metric Imperial

Sec. 35 T.1S., R.7E.,
M.D.B. & M.

Date of Survey December 11, 2015

Corner - Left as found Found and tagged Established Reestablished Rebuilt

Identification and type of corner found: Evidence used to identify or procedure used to establish or reestablish the corner:

See Sheet 2

A description of the physical condition of the monument as found and as set or reset:

See Sheet 2

SURVEYOR'S STATEMENT

This Corner Record was prepared by me or under my direction in conformance with the Land Surveyor's Act on Dec 12, 2015.

Signed Michael L. Quartacci P.L.S. or R.C.E. No.: L.S. 4450



COUNTY SURVEYOR'S STATEMENT

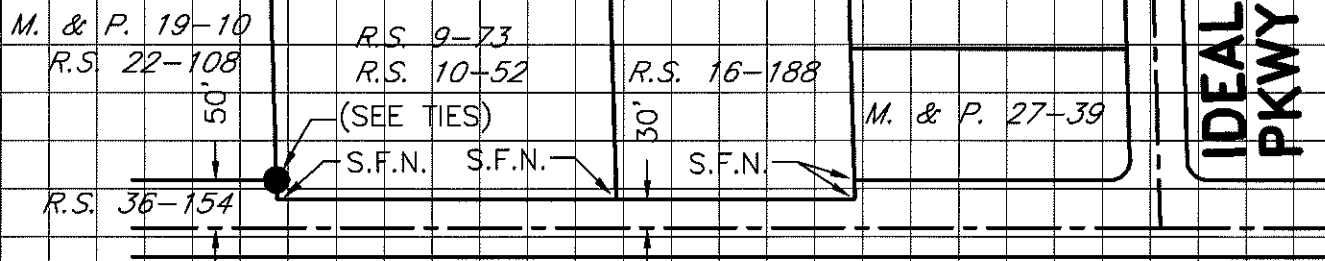
This Corner Record was received January 11, 2016 and examined and filed January 19, 2016.

Signed Warren D. Smith P.L.S. or R.C.E. No.: 4842

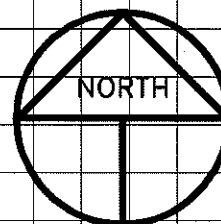
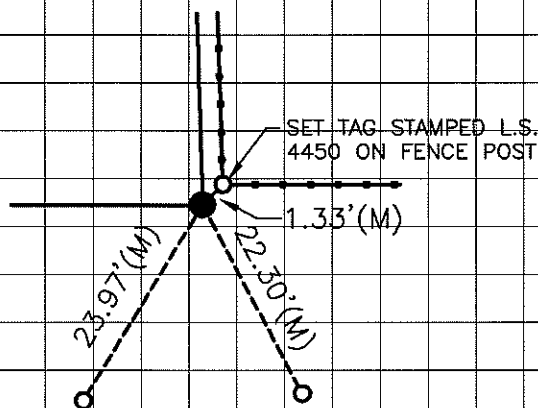
Title Acting County Surveyor

County Surveyor's Comment _____





STATE HIGHWAY ROUTE NO. 120



SCALE: 1" = 200'
2015-260

MON. TIES

NOT TO SCALE

LEGEND

- INDICATES FOUND 1" IRON PIPE W/PLASTIC CAP STAMPED "CA DOT" PER (A)
- INDICATES SET CONCRETE NAIL W/TAG STAMPED L.S. 4450, UNLESS OTHERWISE NOTED
- (M) INDICATES MEASURED ON THIS SURVEY
- R.S. INDICATES RECORD OF SURVEY, BOOK AND PAGE, S.J.C.R.
- M. & P. INDICATES MAPS AND PLATS, VOLUME AND PAGE, S.J.C.R.
- S.J.C.R. INDICATES SAN JOAQUIN COUNTY RECORDS
- S.F.N. INDICATES SEARCH FOUND NOTHING

REFERENCE

(A) R.S. 36-154, S.J.C.R.