

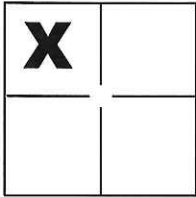
# CORNER RECORD

Document Number CR-16-18

City of \_\_\_\_\_

County of San Joaquin, California

Brief Legal Description Portion of Westerly Section line of Section 33, T.3N., R.8E., M.D.B. & M.



### CORNER TYPE

Government Corner  Control   
 Meander  Property   
 Rancho  Other

### COORDINATES(Optional)

N. \_\_\_\_\_  
 E. \_\_\_\_\_  
 Zone \_\_\_\_\_ NAD27  NAD83   
 NAD83 Epoch \_\_\_\_\_  
 Elev. \_\_\_\_\_  
 Vert. Datum: NGVD29  NADV88   
 Meas. Units: Metric  Imperial

Sec. 33, T.3N., R.8E.,  
M.D.B. & M.

Date of Survey November 20, 2015

Corner - Left as found  Found and tagged  Established  Reestablished  Rebuilt

Identification and type of corner found: Evidence used to identify or procedure used to establish or reestablish the corner:

See Sheet 2

A description of the physical condition of the monument as found and as set or reset: \_\_\_\_\_

See Sheet 2

### SURVEYOR'S STATEMENT

This Corner Record was prepared by me or under my direction in conformance with the Land Surveyor's Act on Nov. 24, 2015.

Signed Michael L. Quartaroli P.L.S. or R.C.E. No.: L.S. 4450



### COUNTY SURVEYOR'S STATEMENT

This Corner Record was received January 11, 2016 and examined and filed January 19, 2016.

Signed Warren D. Smith P.L.S. or R.C.E. No.: 4842

Title Acting County Surveyor

County Surveyor's Comment \_\_\_\_\_



# FRAZIER ROAD

SEC. 29

SEC. 28

SEC. 32  
T.3N., R.8E.,

SEC. 33  
M.D.B. & M.

FD. 2"X2" HUB AND TACK  
AT SEC. COR. PER (B)

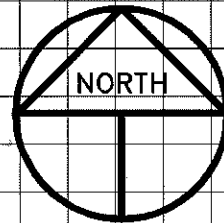
SECTION LINE

## LEGEND

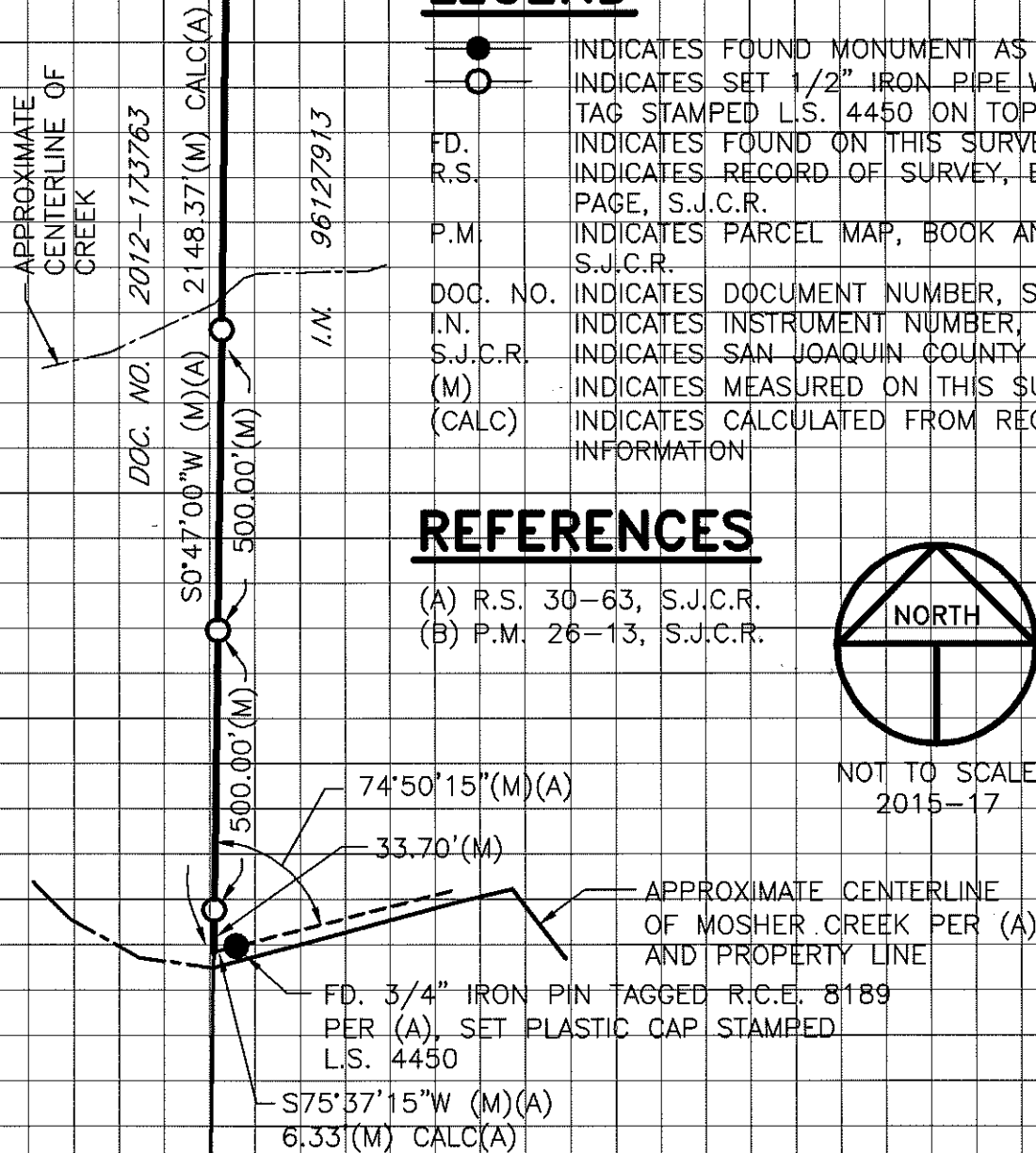
- INDICATES FOUND MONUMENT AS NOTE
- INDICATES SET 1/2" IRON PIPE WITH BRASS TAG STAMPED L.S. 4450 ON TOP OF PIPE
- FD. INDICATES FOUND ON THIS SURVEY
- R.S. INDICATES RECORD OF SURVEY, BOOK AND PAGE, S.J.C.R.
- P.M. INDICATES PARCEL MAP, BOOK AND PAGE, S.J.C.R.
- DOC. NO. INDICATES DOCUMENT NUMBER, S.J.C.R.
- I.N. INDICATES INSTRUMENT NUMBER, S.J.C.R.
- S.J.C.R. INDICATES SAN JOAQUIN COUNTY RECORDS
- (M) INDICATES MEASURED ON THIS SURVEY
- (CALC) INDICATES CALCULATED FROM RECORD INFORMATION

## REFERENCES

- (A) R.S. 30-63, S.J.C.R.
- (B) P.M. 26-13, S.J.C.R.



NOT TO SCALE  
2015-17



R.S. 30-63