

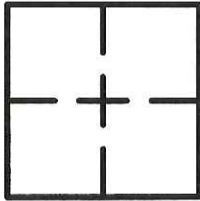
CORNER RECORD

APN No. 2 0 9 - 2 4 0 - 3 0

Document Number CR-15-296

City of TRACY (UNINCORPORATED) County of SAN JOAQUIN, California

Brief Legal Description PORTION OF SOUTH 1/2 OF SECTION 36 T. 2 S., R. 4 E. (1096 OR 85)



CORNER TYPE

Government Corner Control
Meander Property
Rancho Other
Date of Survey 11/13/2015

COORDINATES
(Optional)

N. _____
E. _____
Zone _____ Datum _____
Elev. _____

Corner - Left as found Found and tagged Established Reestablished Rebuilt

In compliance with Section 8771 of the Professional Land Surveyors' Act, this corner record is being filed to ESTABLISH ___ / REESTABLISH ___ the position of an existing monument PRIOR ___ / SUBSEQUENT ___ to street or highway reconstruction. (Use this portion only when applicable.)

Identification and type of corner found: Evidence used to identify or procedure used to establish or reestablish the corner: FOUND 1" IRON PIPES WITH PLASTIC CAP STAMPED "RCE 17,501" PER (38 RS 10) & (35 RS 124), UNLESS NOTED OTHERWISE. SEE PAGE 2 OF 2.

A description of the physical condition of the monument as found and as set or reset: SET 1" IRON PIPES WITH PLASTIC CAP STAMPED "LS 7893" AS SHOWN. SEE PAGE 2 OF 2.

Surveyor's Comment

This Corner Record was prepared by me or under my direction in conformance with the Land Surveyors' Act on NOVEMBER 23 20 15.

Signed [Signature] L.S. or R.C.E. Number LS 7893



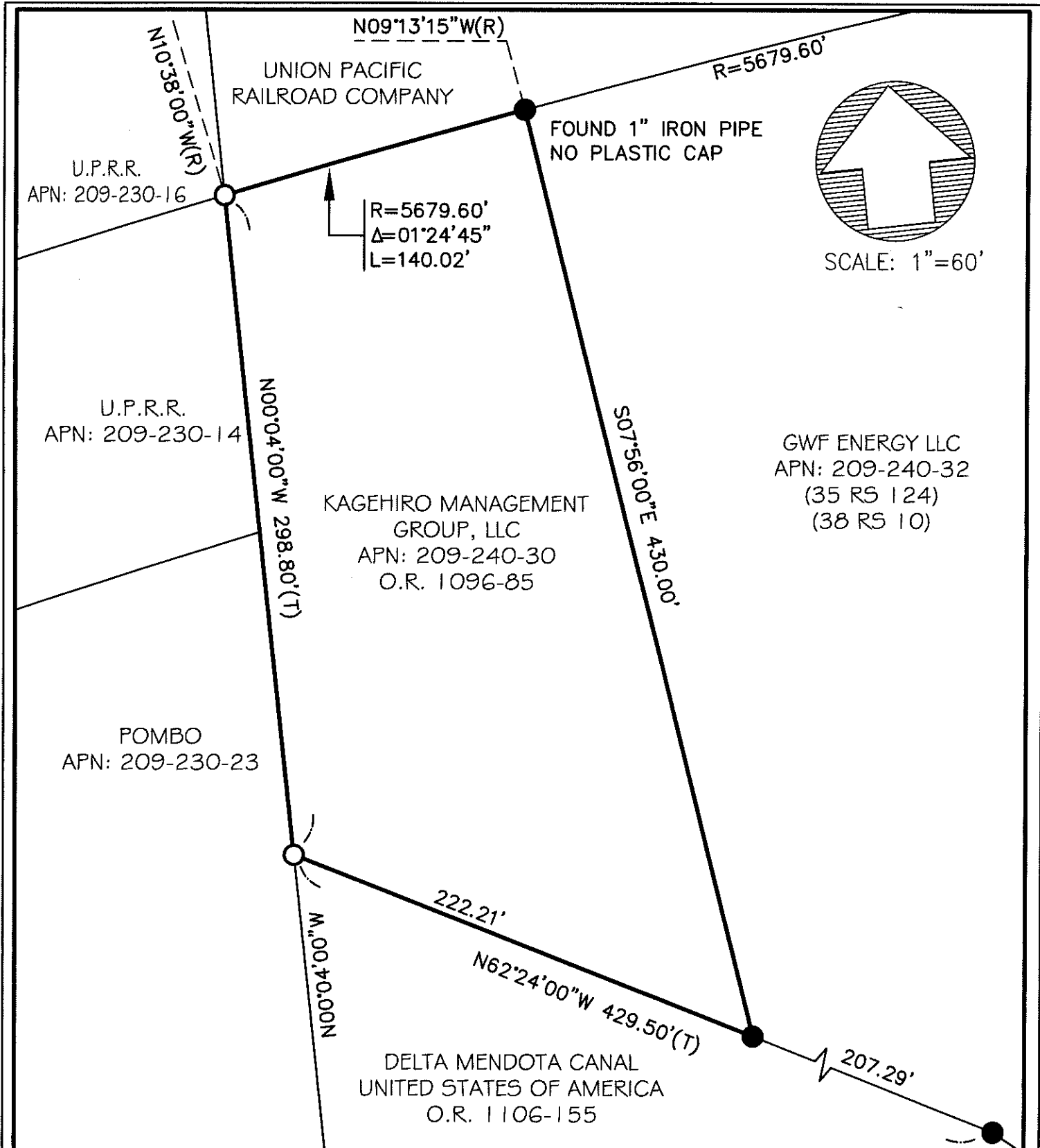
County Surveyor's Comment

This Corner Record was received November 30 20 15 and examined and filed December 18 20 15.

Signed [Signature] Title Acting County Surveyor



County Surveyor's Comment _____



LEGEND & ABBREVIATIONS

- PROPERTY LINE
- - - RADIAL LINE
- (T) TOTAL
- (R) RADIAL
- SET 1" IRON PIPE WITH PLASTIC CAP STAMPED "LS 7893"
- FOUND 1" IRON PIPE WITH PLASTIC CAP STAMPED "RCE 17,501" PER (38 RS 10) & (35 RS 124), UNLESS NOTED OTHERWISE

LCC ENGINEERING & SURVEYING, INC.

930 Estudillo Street
 Martinez, California 94553-1620
 (925) 228-4218 Fax (925) 228-4638
 www.lcc-inc.com