

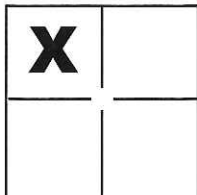
CORNER RECORD

Document Number CR-15-294

City of Tracy

County of San Joaquin, California

Brief Legal Description interior lines of Parcels "1", "2" and "3" per P.M. 25-174, S.J.C.R.



CORNER TYPE

Government Corner Control
 Meander Property
 Rancho Other

COORDINATES(Optional)

N. _____
 E. _____
 Zone _____ NAD27 NAD83
 NAD83 Epoch _____
 Elev. _____
 Vert. Datum: NGVD29 NADV88
 Meas. Units: Metric Imperial

Sec. 22, T.2S., R.5E.,
M.D.B. & M.

Date of Survey October 30, 2015

Corner - Left as found Found and tagged Established Reestablished Rebuilt

Identification and type of corner found: Evidence used to identify or procedure used to establish or reestablish the corner:
See Sheet 2

A description of the physical condition of the monument as found and as set or reset:
See Sheet 2

SURVEYOR'S STATEMENT

This Corner Record was prepared by me or under my direction in conformance with the Land Surveyor's Act on Nov. 20, 2015.

Signed Michael L. Quattaroni P.L.S. or R.C.E. No.: L.S. 4450



COUNTY SURVEYOR'S STATEMENT

This Corner Record was received November 25, 2015 and examined and filed December 18, 2015.

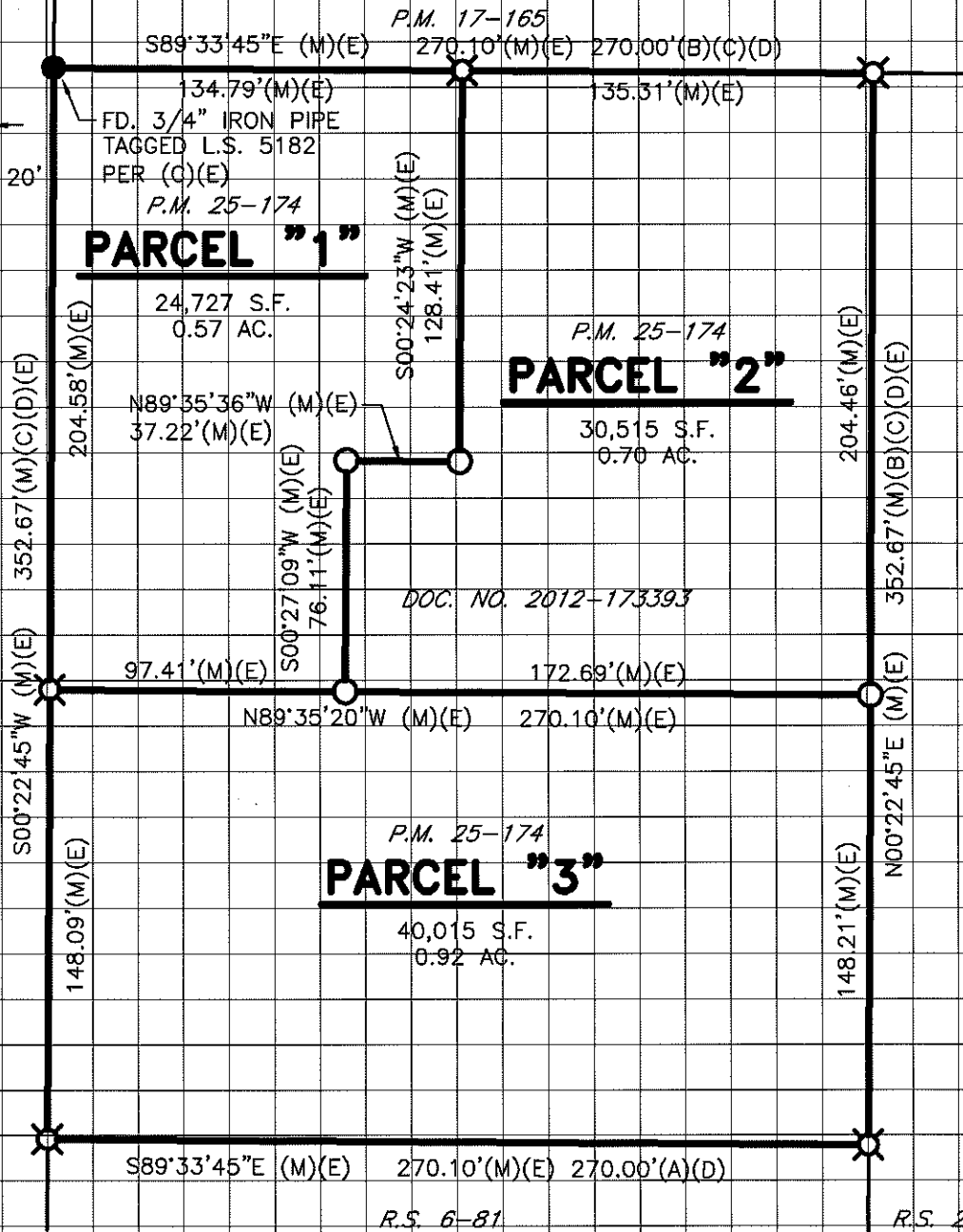
Signed Warren D. Smith P.L.S. or R.C.E. No.: 4842

Title Acting County Surveyor

County Surveyor's Comment _____



UNION PACIFIC RAILROAD

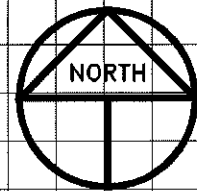


LEGEND

- INDICATES FOUND MONUMENT AS NOTED
- ⊗— INDICATES FOUND 3/4" IRON PIPE W/TAG STAMPED R.C.E. 32158 PER (E)
- INDICATES SET SPIKE AND WASHER STAMPED L.S. 4450
- FD. INDICATES FOUND ON THIS SURVEY
- R.S. INDICATES RECORD OF SURVEY, BOOK AND PAGE, S.J.C.R.
- P.M. INDICATES PARCEL MAP, BOOK AND PAGE, S.J.C.R.
- DOC. NO. INDICATES DOCUMENT NUMBER, S.J.C.R.
- S.J.C.R. INDICATES SAN JOAQUIN COUNTY RECORDS

REFERENCE

- (A) R.S. 6-81, S.J.C.R.
- (B) R.S. 21-189, S.J.C.R.
- (C) P.M. 17-165, S.J.C.R.
- (D) DOC. NO. 2012-173393, S.J.C.R.
- (E) P.M. 25-174, S.J.C.R.



SCALE: 1" = 60'
 2015-221