

CORNER RECORD

Document Number CR-15-293

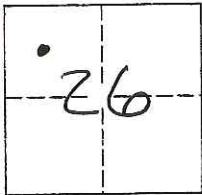
City of _____

County of SAN JOAQUIN, California

Brief Legal Description CENTERLINE OF TOKAY COLONY RD, 51'± EAST OF STATE ROUTE 88

CORNER TYPE

COORDINATES(Optional)



Government Corner Control
Meander Property
Rancho Other

N. _____
E. _____
Zone _____ NAD27 NAD83
NAD83 Epoch _____
Elevation _____
Vert. Datum: NGVD29 NAV88
Meas. Units: Metric Imperial

T3N R7E, MDM

Date of Survey 10/20/2015

Corner - Left as found Found and tagged Established Reestablished Rebuilt

Identification and type of corner found: Evidence used to identify or procedure used to establish or reestablish the corner:

FOUND CENTERLINE MONUMENT OF TOKAY COLONY ROAD APPROXIMATELY 51 FEET EAST OF STATE ROUTE 88 AS PER PARCEL MAP VOLUME 24 PAGE 28 AND CORNER RECORD DOCUMENT #08-117

A description of the physical condition of the monument as found and as set or reset: FOUND SAN JOAQUIN COUNTY PIN AND WASHER DOWN 0.3' INSIDE OF A MONUMENT WELL. FOUND 3 REFERENCE MARKS FROM PREVIOUS CORNER RECORD. SET 1 REFERENCE MARK. MEASURED DISTANCES FROM MONUMENT TO NEW AND OLD REFERENCE MARKS.

SURVEYOR'S STATEMENT

This Corner Record was prepared by me or under my direction in conformance with the Land Surveyor's Act on Nov. 24, 2015.

Signed [Signature] P.L.S. or R.C.E. Number 8022
For the State of California
Department of Transportation



COUNTY SURVEYOR'S STATEMENT

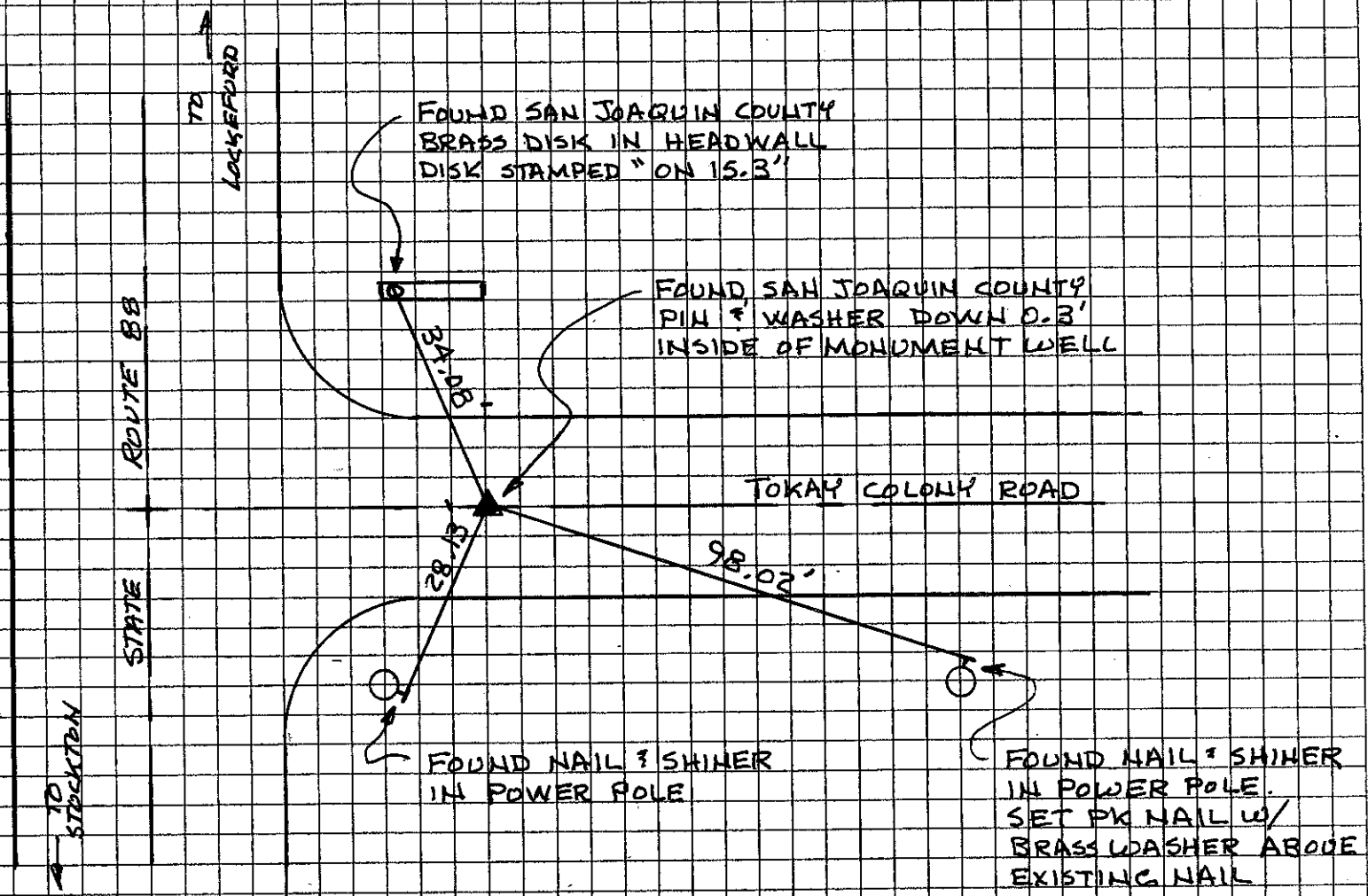
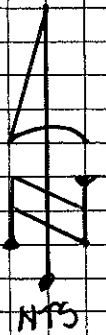
This Corner Record was received November 25, 2015 and examined and filed December 18, 2015.

Signed [Signature] P.L.S. or R.C.E. Number 4842

Title Acting County Surveyor

County Surveyor's Comment _____





NOTE: THE TIES SHOWN HEREON ARE FOR THE PURPOSE OF PERPETUATING THE MONUMENTATION CURRENTLY EXISTING. NO ATTEMPT WAS MADE TO DETERMINE THE VALIDITY OF THE MONUMENT OR ITS PROPER LOCATION IN RELATION TO LEGAL BOUNDARY LINES IN THE AREA.