

CORNER RECORD

Document Number CR-15-292

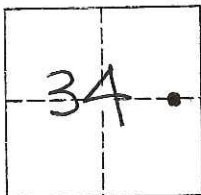
City of \_\_\_\_\_

County of SAN JOAQUIN, California

Brief Legal Description CENTERLINE OF STATE ROUTE 88, 806 METERS NORTH OF 8-MILE ROAD.

CORNER TYPE

COORDINATES(Optional)



T3N RTE, MDM

Government Corner  Control   
 Meander  Property   
 Rancho  Other

Date of Survey 10/20/2015

N. \_\_\_\_\_  
 E. \_\_\_\_\_  
 Zone \_\_\_\_\_ NAD27  NAD83   
 NAD83 Epoch \_\_\_\_\_  
 Elevation \_\_\_\_\_  
 Vert. Datum: NGVD29  NAV88   
 Meas. Units: Metric  Imperial

Corner - Left as found  Found and tagged  Established  Reestablished  Rebuilt

Identification and type of corner found: Evidence used to identify or procedure used to establish or reestablish the corner:

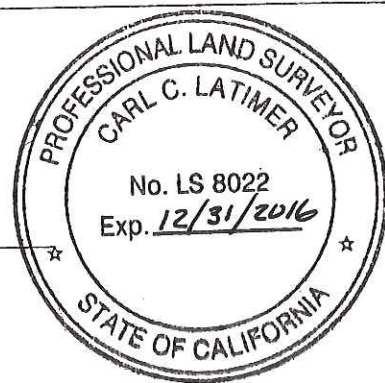
FOUND CENTERLINE MONUMENT OF STATE ROUTE 88 APPROXIMATELY 806 METERS NORTH OF EIGHT-MILE ROAD AND APPROXIMATELY 108 METERS SOUTH OF THE BEGINNING OF A CURVE AS PER RECORD OF SURVEY, VOLUME 34, PAGE 196.

A description of the physical condition of the monument as found and as set or reset: FOUND 3/4" SQUARE BOLT HEAD WITH NO TAG, DOWN 0.8' INSIDE OF A NEWLY SET MONUMENT WELL. SET 3 REFERENCE MARKS. MEASURED DISTANCES FROM MONUMENT TO REFERENCE MARKS.

SURVEYOR'S STATEMENT

This Corner Record was prepared by me or under my direction in conformance with the Land Surveyor's Act on Nov. 24, 2015.

Signed [Signature] (P.L.S.) or R.C.E. Number 8022  
 For the State of California  
 Department of Transportation



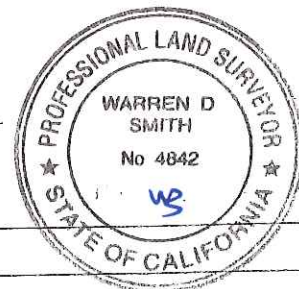
COUNTY SURVEYOR'S STATEMENT

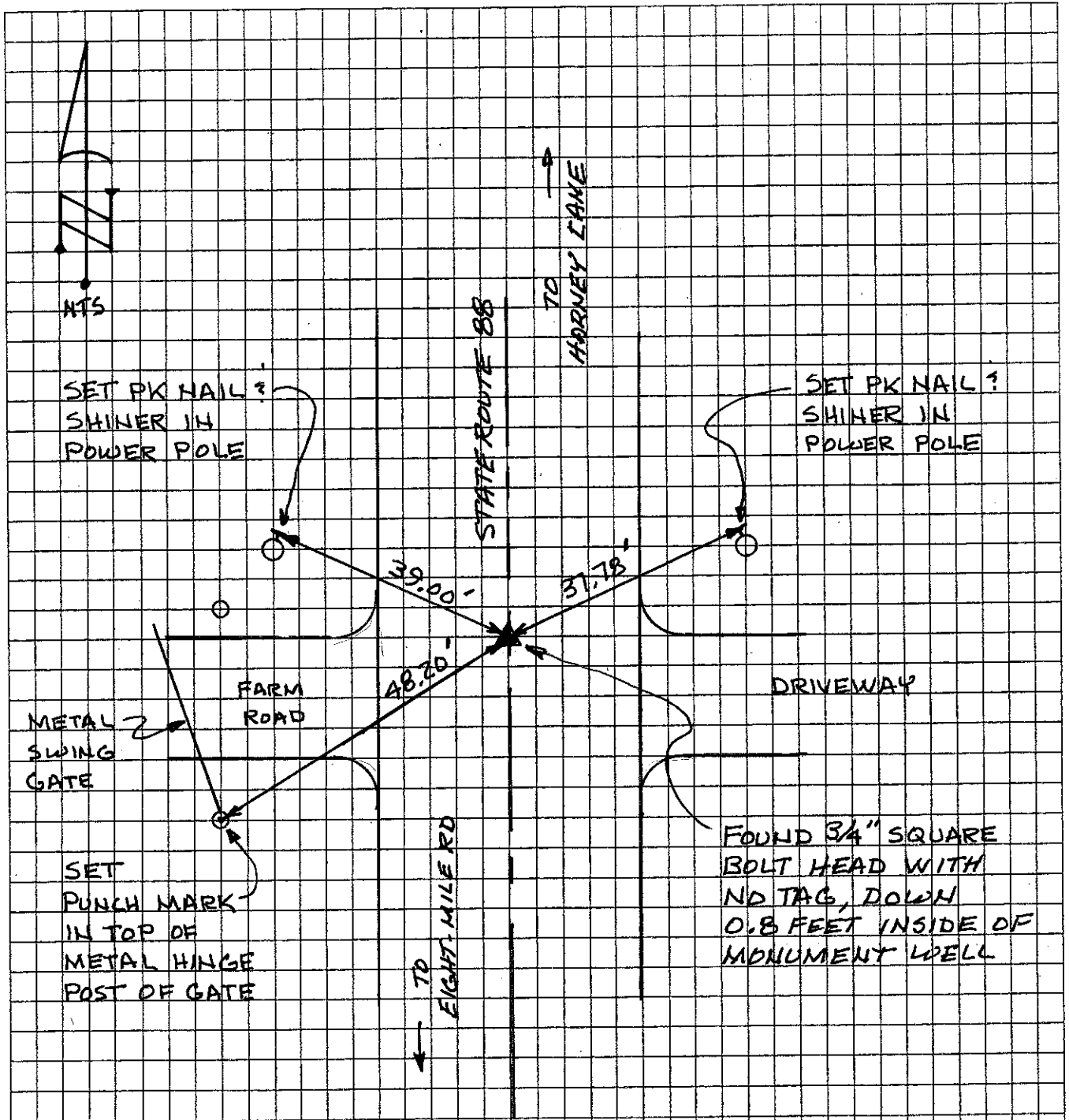
This Corner Record was received November 25, 2015 and examined and filed December 18, 2015.

Signed [Signature] P.L.S. or R.C.E. Number 4842

Title Acting County Surveyor

County Surveyor's Comment \_\_\_\_\_





NOTE: THE TIES SHOWN HEREON ARE FOR THE PURPOSE OF PERPETUATING THE MONUMENTATION CURRENTLY EXISTING. NO ATTEMPT WAS MADE TO DETERMINE THE VALIDITY OF THE MONUMENT OR IT'S PROPER LOCATION IN RELATION TO LEGAL BOUNDARY LINES IN THE AREA.