

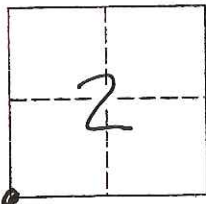
CORNER RECORD

Document Number CR-15-289

City of _____

County of SAN JOAQUIN, California

Brief Legal Description SW CORNER OF SECTION 2 OF T2N, R7E



T2N R7E, MDM

CORNER TYPE

Government Corner Control
Meander Property
Rancho Other

Date of Survey 10/20/2015

COORDINATES(Optional)

N. _____
E. _____
Zone _____ NAD27 NAD83
NAD83 Epoch _____
Elevation _____
Vert. Datum: NGVD29 NAV88
Meas. Units: Metric Imperial

Corner - Left as found Found and tagged Established Reestablished Rebuilt

Identification and type of corner found: Evidence used to identify or procedure used to establish or reestablish the corner:

FOUND SOUTHWEST SECTION CORNER OF SECTION 2 OF T2N, R7E AS PER RECORD OF SURVEY VOLUME 34, PAGE 196.

A description of the physical condition of the monument as found and as set or reset: FOUND 60D SPIKE IN CONCRETE, DOWN 0.3' INSIDE OF A MONUMENT WELL. NO ATTEMPT WAS MADE TO FIND A POSSIBLE MONUMENT BELOW THE SPIKE. SET 3 REFERENCE POINTS, MEASURED DISTANCES FROM MONUMENT TO REFERENCE POINTS.

SURVEYOR'S STATEMENT

This Corner Record was prepared by me or under my direction in conformance with the Land Surveyor's Act on NOV. 24, 2015.

Signed [Signature] P.L.S. or R.C.E. Number 8022
For the State of California
Department of Transportation



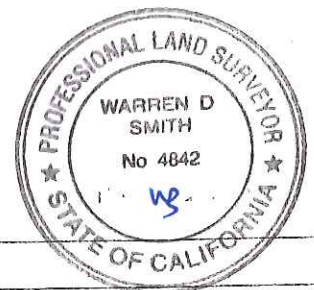
COUNTY SURVEYOR'S STATEMENT

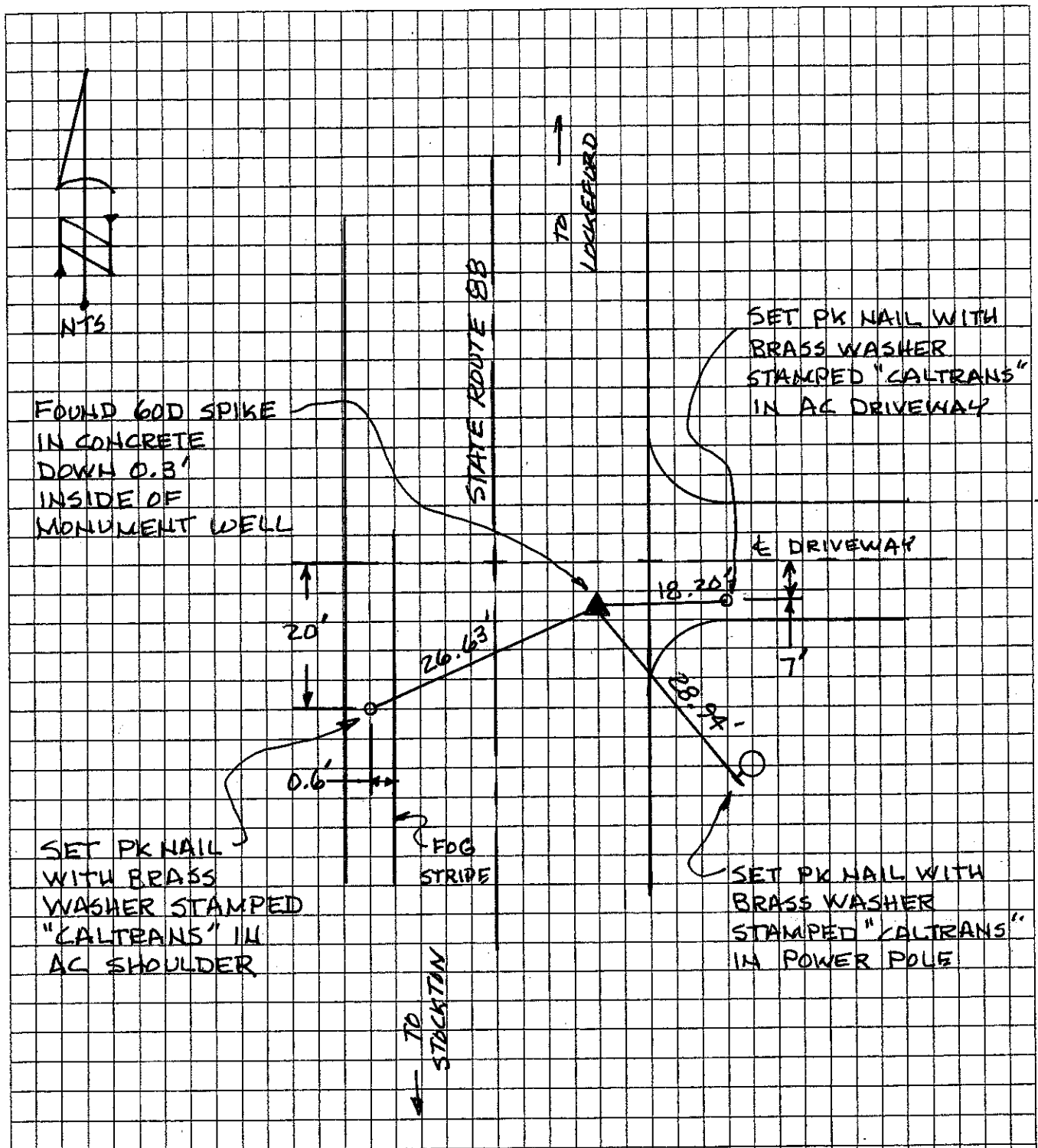
This Corner Record was received November 25, 2015 and examined and filed December 18, 2015.

Signed [Signature] P.L.S. or R.C.E. Number 4842

Title Acting County Surveyor

County Surveyor's Comment _____





NOTE: THE TIES SHOWN HEREON ARE FOR THE PURPOSE OF PERPETUATING THE MONUMENTATION CURRENTLY EXISTING. NO ATTEMPT WAS MADE TO DETERMINE THE VALIDITY OF THE MONUMENT OR ITS PROPER LOCATION IN RELATION TO LEGAL BOUNDARY LINES IN THE AREA.