

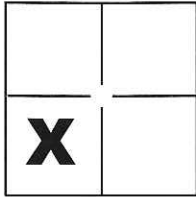
CORNER RECORD

Document Number CR-15-284

City of _____

County of San Joaquin, California

Brief Legal Description Southerly and Easterly property line per R.S. 17-138, S.J.C.R.



CORNER TYPE

Government Corner Control
 Meander Property
 Rancho Other

COORDINATES(Optional)

N. _____
 E. _____
 Zone _____ NAD27 NAD83
 NAD83 Epoch _____
 Elev. _____
 Vert. Datum: NGVD29 NADV88
 Meas. Units: Metric Imperial

Sec. 16, T.1S., R.7E.,
M.D.B. & M.

Date of Survey November 10, 2015

Corner - Left as found Found and tagged Established Reestablished Rebuilt

Identification and type of corner found: Evidence used to identify or procedure used to establish or reestablish the corner:

See Sheet 2

A description of the physical condition of the monument as found and as set or reset: _____

See Sheet 2

SURVEYOR'S STATEMENT

This Corner Record was prepared by me or under my direction in conformance with the Land Surveyor's Act on Nov. 9, 2015.

Signed Michael L. Quantaro P.L.S. or R.C.E. No.: L.S. 4450



COUNTY SURVEYOR'S STATEMENT

This Corner Record was received December 10, 2015 and examined and filed December 18, 2015.

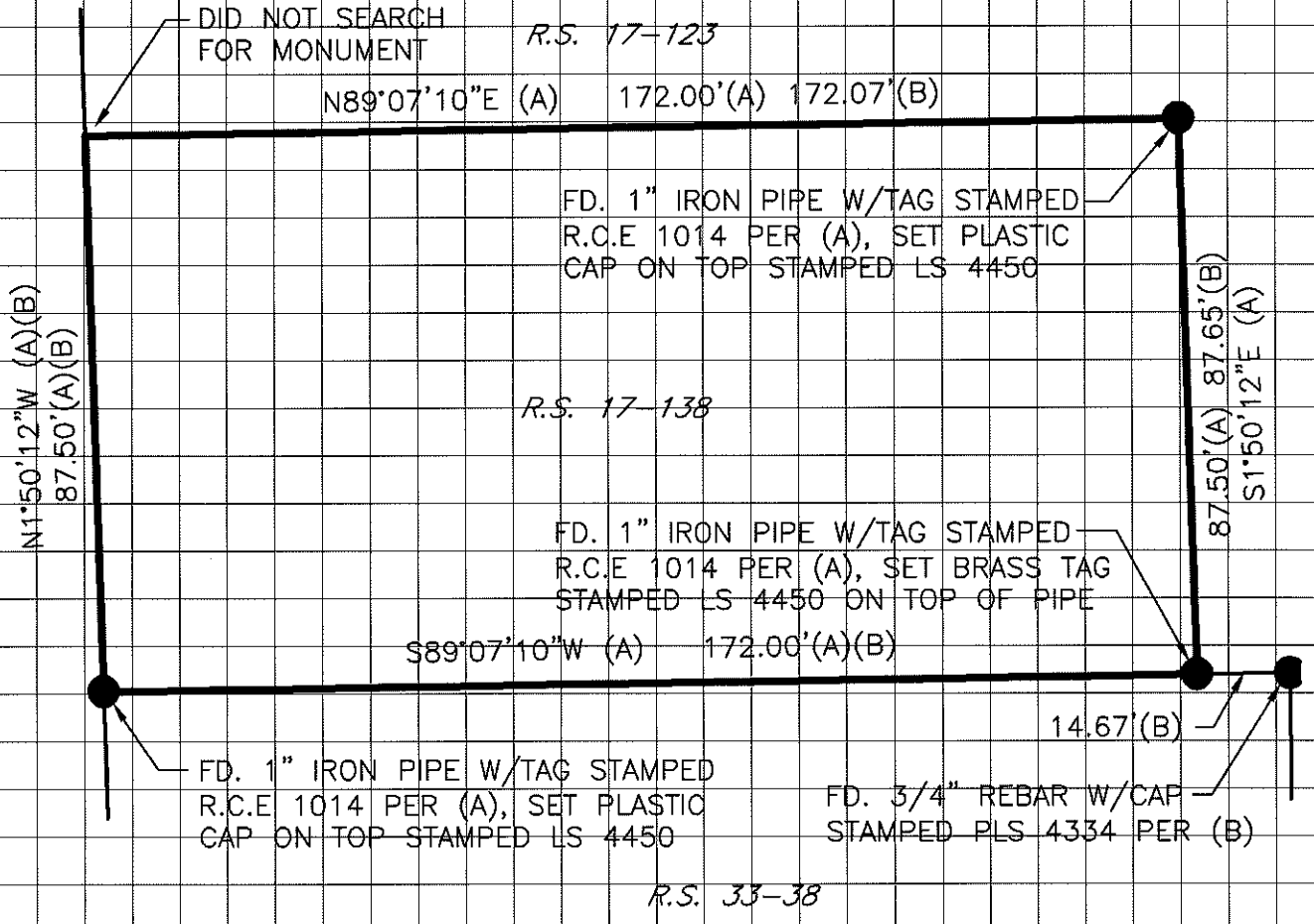
Signed Warren D. Smith P.L.S. or R.C.E. No.: 4842

Title Acting County Surveyor

County Surveyor's Comment _____



STATE HIGHWAY ROUTE NO. 99

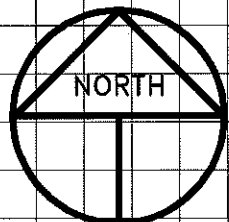


LEGEND

- INDICATES FOUND MONUMENT AS NOTED
- FD. INDICATES FOUND ON THIS SURVEY
- R.S. INDICATES RECORD OF SURVEY, BOOK AND PAGE, S.J.C.R.
- S.J.C.R. INDICATES SAN JOAQUIN COUNTY RECORDS

REFERENCES

- (A) R.S. 17-138, S.J.C.R.
- (B) R.S. 33-38, S.J.C.R.



SCALE: 1" = 30'
2015-231