

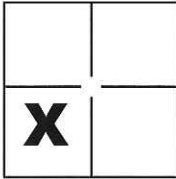
CORNER RECORD

Document Number CR-15-281

City of _____

County of San Joaquin, California

Brief Legal Description 3.12 acre parcel as shown on R.S. 36-162, S.J.C.R.



CORNER TYPE

Government Corner Control
 Meander Property
 Rancho Other

COORDINATES(Optional)

N. _____
 E. _____
 Zone _____ NAD27 NAD83
 NAD83 Epoch _____
 Elev. _____
 Vert. Datum: NGVD29 NADV88
 Meas. Units: Metric Imperial

Sec. 35, T.1S., R.8E.,
M.D.B. & M.

Date of Survey September 25, 2015

Corner - Left as found Found and tagged Established Reestablished Rebuilt

Identification and type of corner found: Evidence used to identify or procedure used to establish or reestablish the corner:

See Sheet 2

A description of the physical condition of the monument as found and as set or reset: _____

See Sheet 2

SURVEYOR'S STATEMENT

This Corner Record was prepared by me or under my direction in conformance with

the Land Surveyor's Act on Nov. 13, 2015.

Signed Michael L. Quarantoni P.L.S. or R.C.E. No.: L.S. 4450



COUNTY SURVEYOR'S STATEMENT

This Corner Record was received November 17, 2015 and examined

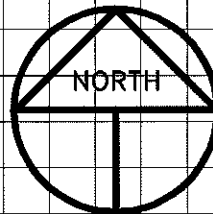
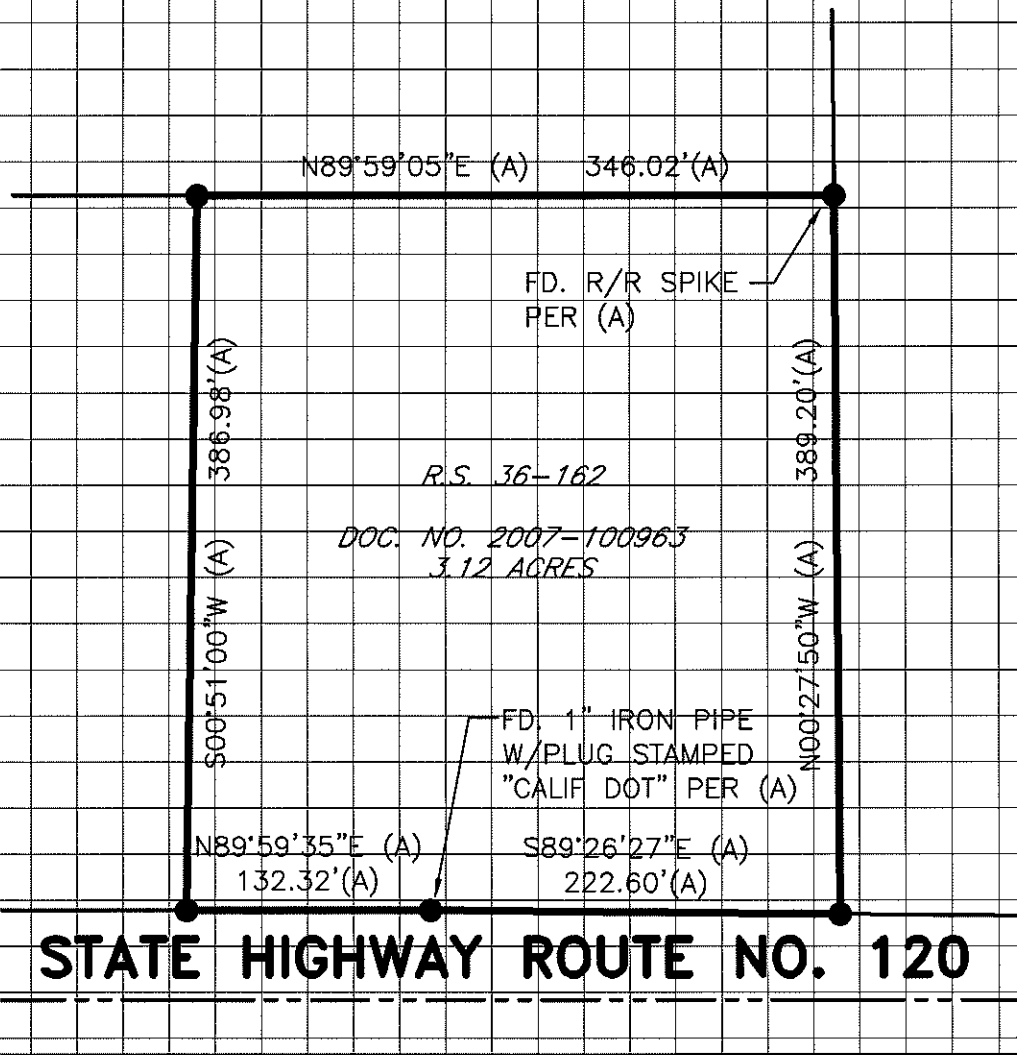
and filed December 7, 2015.

Signed Warren D. Smith P.L.S. or R.C.E. No.: 4842

Title Acting County Surveyor

County Surveyor's Comment _____





SCALE: 1" = 100'
2015-194

LEGEND

- INDICATES FOUND 3/4" IRON PIPE W/TAG STAMPED L.S. 4450
PER (A), SET PLASTIC CAP STAMPED L.S. 4450
- FD. INDICATES FOUND ON THIS SURVEY
- R.S. INDICATES RECORD OF SURVEY, BOOK AND PAGE, S.J.C.R.
- S.J.C.R. INDICATES SAN JOAQUIN COUNTY RECORDS

REFERENCE

(A) R.S. 36-162, S.J.C.R.