

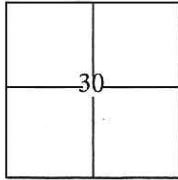
CORNER RECORD

Document Number CR-15-273

City of Stockton

County of San Joaquin, California

Brief Legal Description Brookside Estates, Unit No. 18, Book 33 of Maps & Plats, Page 16.



CORNER TYPE

Government Corner Control
 Meander Property
 Rancho Other

COORDINATES(Optional)

N. _____
 E. _____
 Zone III NAD27 NAD83
 NAD83 Epoch 1991.35
 Elev. _____
 Vert. Datum: NGVD29 NADV88
 Meas. Units: Metric Imperial

T. 2 N. R. 6 E. M.D.B.&M.

Date of Survey September 16, 2015

Corner - Left as found Found and tagged Established Reestablished Rebuilt

Identification and type of corner found: Evidence used to identify or procedure used to establish or reestablish the corner:

Found 2 foot swing ties at each street monument location shown but no brass disk inside monument well. Used G.P.S. to locate swing ties and used total station to traverse through swing ties as a verification of adjusted G.P.S. values. Found cut "X"s at lot line projections per M&P, 33-16, S.J.C.R. and used total station set up on swing ties to establish location of each found cut "X".

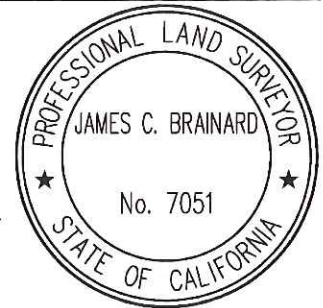
A description of the physical condition of the monument as found and as set or reset: _____

Found cut "X"s in concrete, along the approximate property line extended into the right of way, approximately 2 feet from lot corners. Also, found empty monument wells with four nails in pavement at approximate 2 foot offsets. As shown on page 2.

SURVEYOR'S STATEMENT

This Corner Record was prepared by me or under my direction in conformance with the Land Surveyor's Act on September 23, 2015.

Signed [Signature] P.L.S. or R.C.E. No.: 7051



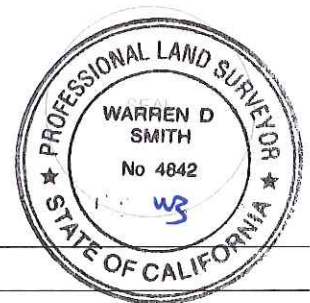
COUNTY SURVEYOR'S STATEMENT

This Corner Record was received October 27, 2015 and examined and filed November 23, 2015.

Signed [Signature] P.L.S. or R.C.E. No.: 4842

Title Acting County Surveyor

County Surveyor's Comment _____



STATEMENT OF PURPOSE:

THE PURPOSE OF THIS SURVEY IS TO IDENTIFY AND RECORD THE LOCATION OF EXISTING MONUMENTS PRIOR TO THE CONSTRUCTION OF PG&E FACILITIES AROUND THE MONUMENTS. THE PURPOSE OF THIS SURVEY IS NOT TO MAKE PROPERTY LINE DETERMINATIONS. LOT LINES SHOWN HEREON ARE FOR GENERAL LOCATION AND INFORMATIONAL PURPOSES ONLY.

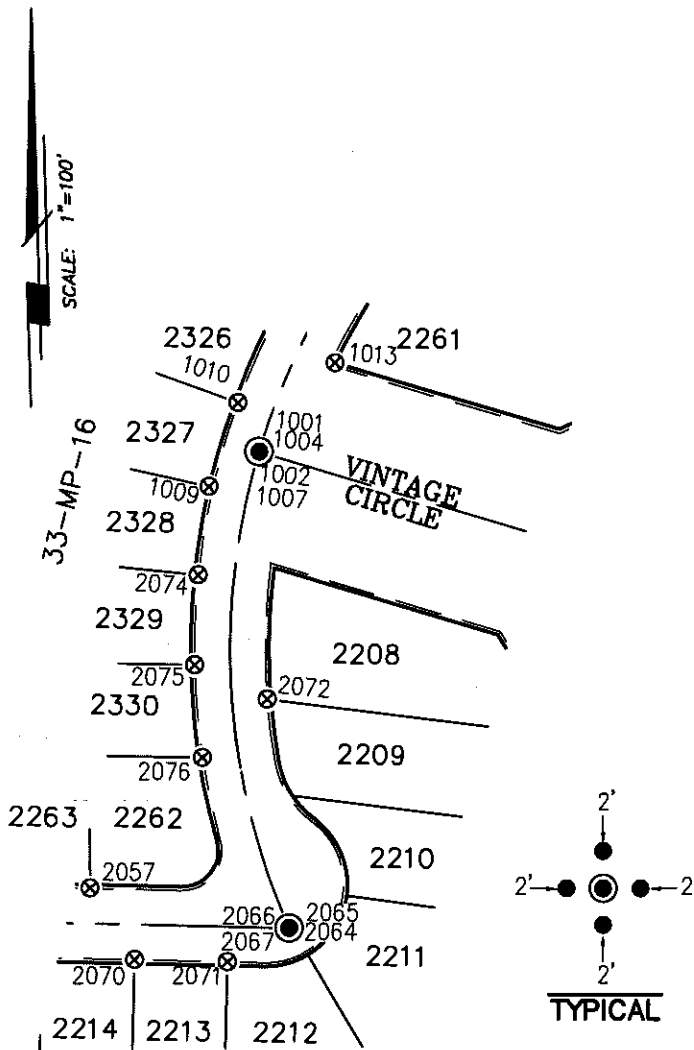
DATUM STATEMENT:

COORDINATES SHOWN HEREON ARE GRID AND ARE BASED ON CITY OF STOCKTON MONUMENTS 12N-2 AND 12N-1, CALIFORNIA COORDINATE SYSTEM (CCS83), ZONE III, 1983 NAD, (1991.35 EPOCH STOCKTON & SAN JOAQUIN COUNTY GPS ADJUSTMENT) AND SHOWN ON RECORD OF SURVEY BOOK 33 OF SURVEYS, PAGE 20. THE PROJECT SPECIFIC COMBINED SCALE FACTOR IS 0.99993802.

LEGEND:

- ⊗ INDICATES FOUND CUT CROSS, NO TAG. PER M&P 33-16.
- INDICATES FOUND ROAD NAIL, 2 FOOT SWING TIE
- ⊙ INDICATES FOUND MONUMENT WELL, NO MONUMENT

GRID COORDINATES (U.S. SURVEY FEET)		
POINT	NORTHING	EASTING
1001	2183708.88'	6312011.80'
1002	2183707.78'	6312009.08'
1004	2183706.37'	6312012.85'
1007	2183705.24'	6312010.12'
1009	2183688.18'	6311984.27'
1010	2183733.79'	6311999.77'
1013	2183755.28'	6312052.32'
2057	2183471.19'	6311920.38'
2064	2183450.02'	6312029.69'
2065	2183451.69'	6312027.56'
2066	2183449.37'	6312025.74'
2067	2183447.70'	6312027.87'
2070	2183432.62'	6311944.50'
2071	2183431.42'	6311994.48'
2072	2183573.19'	6312015.60'
2074	2183640.39'	6311978.43'
2075	2183591.82'	6311976.53'
2076	2183541.72'	6311980.89'



NOTE:

FIELD EFFORT INCLUDED A SEARCH FOR EXISTING CUT CROSSES AT THEIR TYPICAL LOCATION, ONLY THOSE FOUND ARE SHOWN.