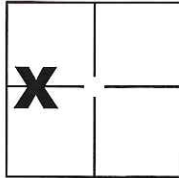


CORNER RECORD

Document Number CR-15-238
County of San Joaquin, California

City of _____

Brief Legal Description Parcel "2" per P.M. 16-186, S.J.C.R.



Sec. 28 T.1S., R.9E.,
M.D.B. & M.

CORNER TYPE

Government Corner Control
Meander Property
Rancho Other

Date of Survey July 11, 2015

COORDINATES(Optional)

N. _____
E. _____
Zone _____ NAD27 NAD83
NAD83 Epoch _____
Elev. _____
Vert. Datum: NGVD29 NADV88
Meas. Units: Metric Imperial

Corner - Left as found Found and tagged Established Reestablished Rebuilt

Identification and type of corner found: Evidence used to identify or procedure used to establish or reestablish the corner:

See Sheet 2

A description of the physical condition of the monument as found and as set or reset:

See Sheet 2

SURVEYOR'S STATEMENT

This Corner Record was prepared by me or under my direction in conformance with
the Land Surveyor's Act on Sept. 3, 2015.

Signed Michael L. Quaranta P.L.S. or R.C.E. No.: _____ L.S. 4450



COUNTY SURVEYOR'S STATEMENT

This Corner Record was received September 11, 2015 and examined
and filed October 9, 2015.

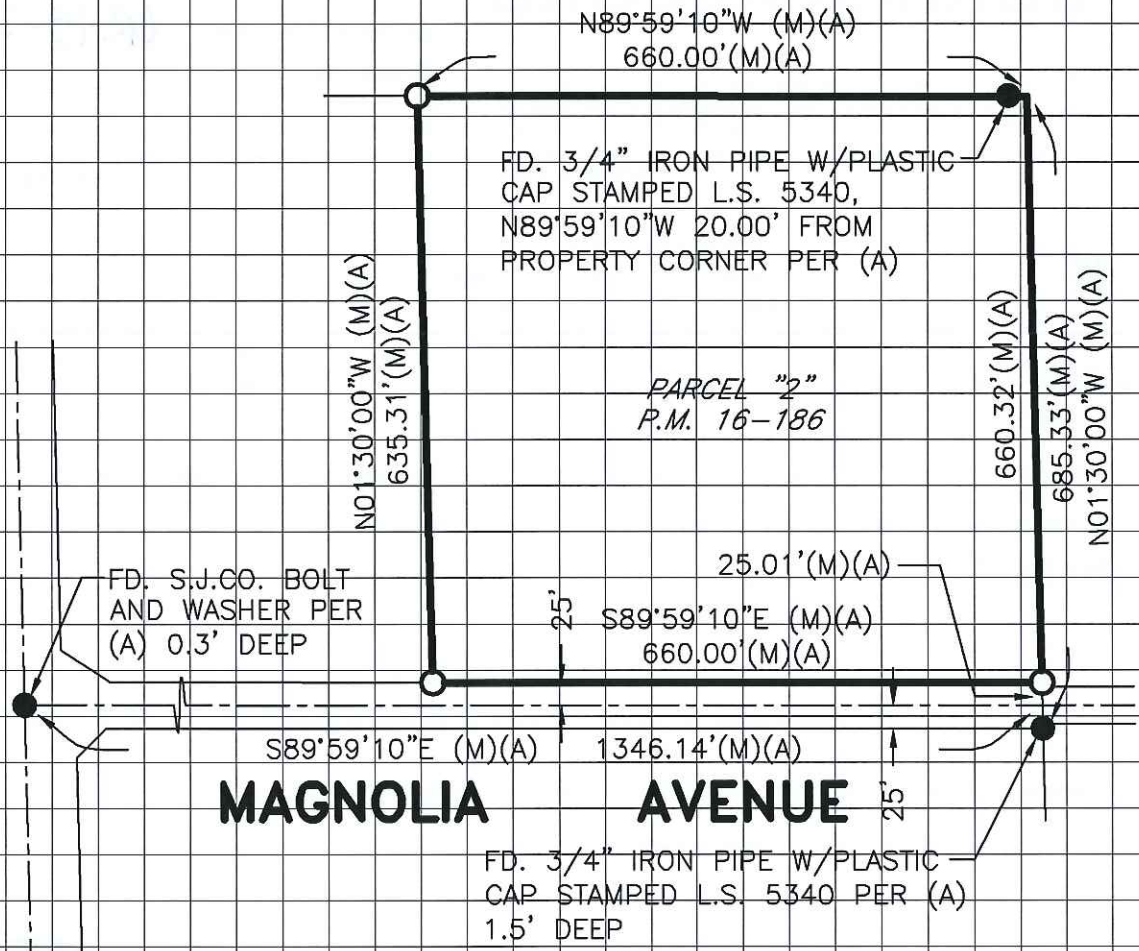
Signed Warren D. Smith P.L.S. or R.C.E. No.: 4842

Title Acting County Surveyor

County Surveyor's Comment _____



ESCALON-BELLOTA ROAD



PARCEL "2"
P.M. 16-186

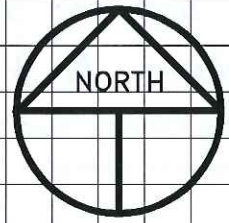
MAGNOLIA AVENUE

LEGEND

- INDICATES FOUND MONUMENT AS NOTED
- INDICATES SET 3/4" IRON PIPE W/PLASTIC CAP STAMPED L.S. 4450
- FD. INDICATES FOUND ON THIS SURVEY
- P.M. INDICATES RECORD OF SURVEY, BOOK AND PAGE, S.J.C.R.
- S.J.C.R. INDICATES SAN JOAQUIN COUNTY RECORDS

REFERENCE

(A) P.M. 16-186, S.J.C.R.



SCALE: 1" = 200'
2014-268