

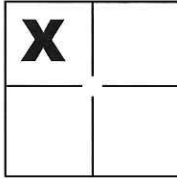
CORNER RECORD

Document Number CR-15-237

City of _____

County of San Joaquin, California

Brief Legal Description A portion of the Northwest Quarter of Section 35, T.4N., R.6E., M.D.B. & M



CORNER TYPE

Government Corner Control
Meander Property
Rancho Other

COORDINATES(Optional)

N. _____
E. _____
Zone _____ NAD27 NAD83
NAD83 Epoch _____
Elev. _____
Vert. Datum: NGVD29 NADV88
Meas. Units: Metric Imperial

Sec. 35 T.4N., R.6E.,
M.D.B. & M.

Date of Survey July 2, 2015

Corner - Left as found Found and tagged Established Reestablished Rebuilt

Identification and type of corner found: Evidence used to identify or procedure used to establish or reestablish the corner:

See Sheet 2

A description of the physical condition of the monument as found and as set or reset: _____

See Sheet 2

SURVEYOR'S STATEMENT

This Corner Record was prepared by me or under my direction in conformance with the Land Surveyor's Act on Sept. 3, 2015.

Signed Michael L. Quaranta P.L.S. or R.C.E. No.: _____ L.S. 4450



COUNTY SURVEYOR'S STATEMENT

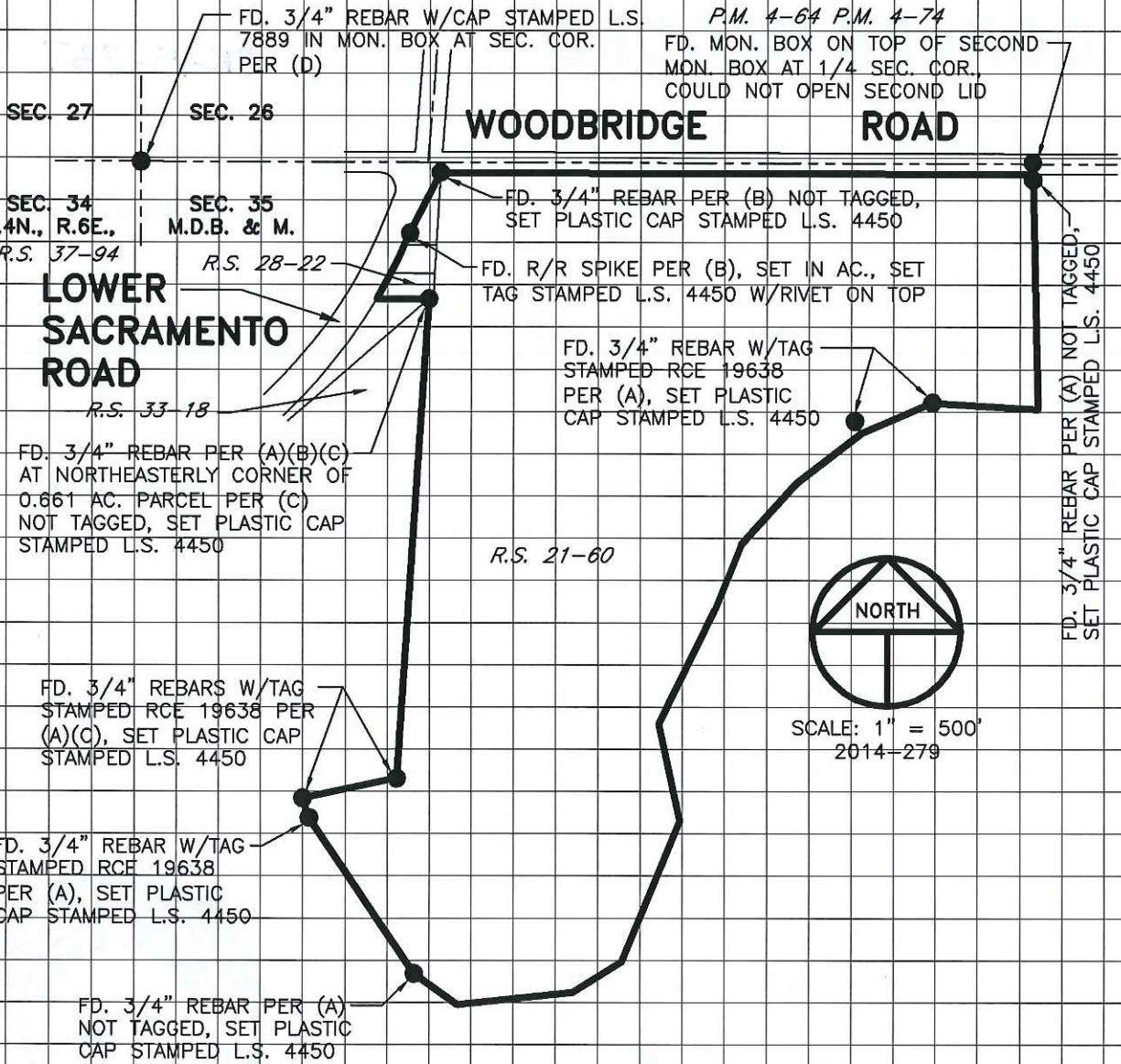
This Corner Record was received October 14, 2015 and examined and filed October 15, 2015.

Signed Warren D. Smith P.L.S. or R.C.E. No.: 4042

Title Acting County Surveyor

County Surveyor's Comment _____





LEGEND

- INDICATES FOUND MONUMENT AS NOTED
- FD. INDICATES FOUND ON THIS SURVEY
- R.S. INDICATES RECORD OF SURVEY, BOOK AND PAGE, S.J.C.R.
- S.J.C.R. INDICATES SAN JOAQUIN COUNTY RECORDS
- P.M. INDICATES PARCEL MAP, BOOK AND PAGE, S.J.C.R.

REFERENCES

- (A) R.S. 21-60, S.J.C.R.
- (B) R.S. 28-22, S.J.C.R.
- (C) R.S. 33-18, S.J.C.R.
- (D) R.S. 37-94, S.J.C.R.

NOTE

RETRACEMENT SURVEYS WILL DETERMINE VALIDITY OF MONUMENT LOCATIONS