

# CORNER RECORD

Document Number CR-15-219

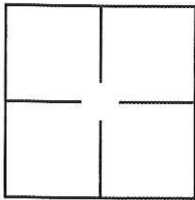
City of RIPON

County of SAN JOAQUIN, California

Brief Legal Description FLAGSTONE DR. & DIAMOND WAY, TRACT 3582, 42-M & P-24, SAN JOAQUIN COUNTY RECORDS

### CORNER TYPE

### COORDINATES (Optional)



Government Corner  Control   
 Meander  Property   
 Rancho  Other   
 Date of Survey 08-17-15

N \_\_\_\_\_  
 E \_\_\_\_\_  
 Zone \_\_\_\_\_ NAD27  NAD83   
 NAD83 Epoch \_\_\_\_\_  
 Elevation \_\_\_\_\_  
 Vert. Datum: NGVD29  NADV88   
 Meas Units: Metric  Imperial

**Corner -** Left as found  Found and tagged  Established  Reestablished  Rebuilt

Identification and type of corner found: Evidence used to identify or procedure used to establish or reestablish the corner:

\*SEE EXHIBIT\*

A description of the physical condition of the monument as found and as set or reset: \_\_\_\_\_

\*SEE EXHIBIT\*

### SURVEYOR'S STATEMENT

This Corner Record was prepared by me or under my direction in conformance with  
 the Land Surveyors' Act on Sept. 3<sup>rd</sup>, 2015.

Signed Henry Wong P.L.S. or R.C.E. Number 31008



### COUNTY SURVEYOR'S STATEMENT

This Corner Record was received September 4, 2015 and examined  
 and filed September 14, 2015.

Signed Warren D. Smith P.L.S. or R.C.E. Number 4842

Title Acting County Surveyor

County Surveyor's Comment \_\_\_\_\_



**LEGEND:**

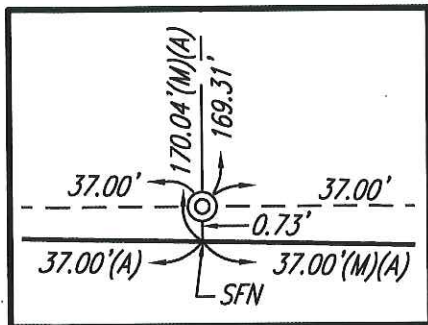
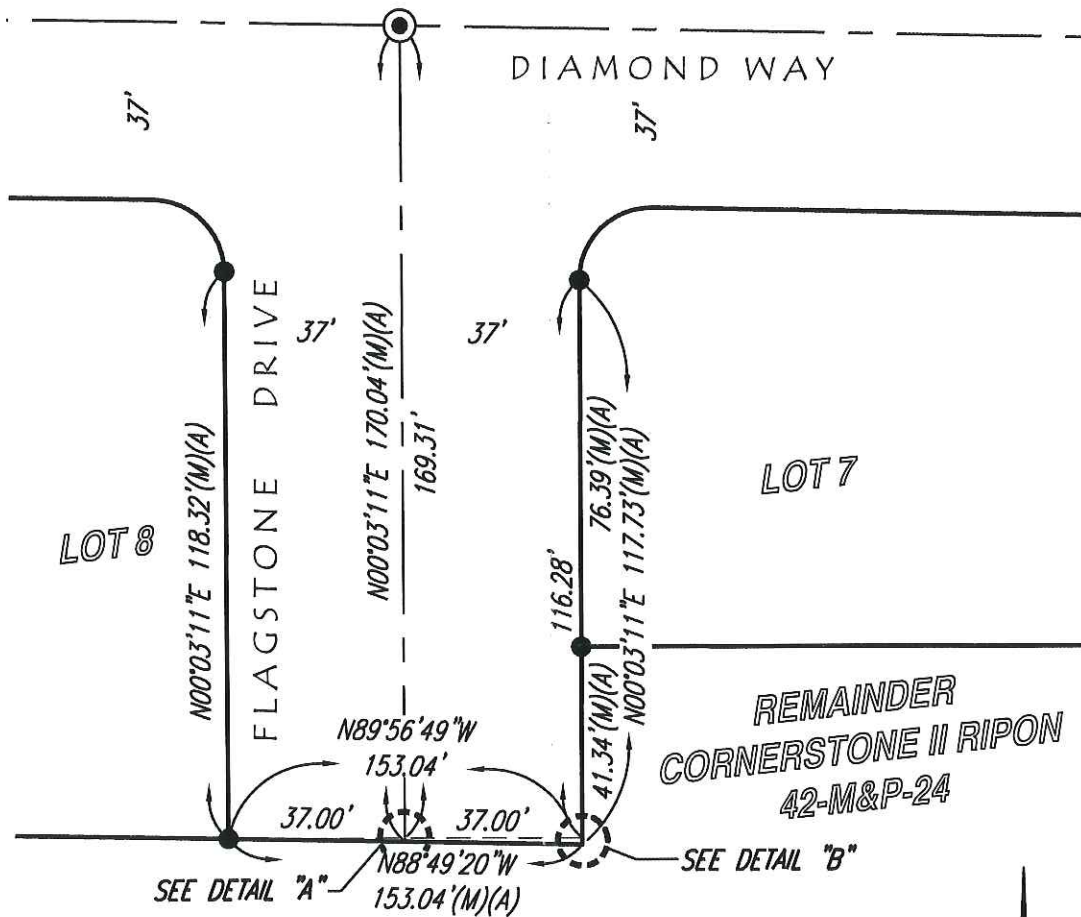
- SJCR SAN JOAQUIN COUNTY RECORDS
- FD FOUND
- IP IRON PIPE
- SET 3/4" x 30" IP WITH PLASTIC CAP STAMPED RCE 31008
- ⊙ SET 3/4" x 30" IP WITH PLASTIC CAP STAMPED RCE 31008 IN EXISTING MONUMENT WELL.
- FD 3/4" IP WITH PLASTIC CAP STAMPED RCE 31008 PER (A).
- ⊙ FD 3/4" IP WITH PLASTIC CAP STAMPED RCE 31008 IN MONUMENT WALL PER (A).

**REFERENCES:**

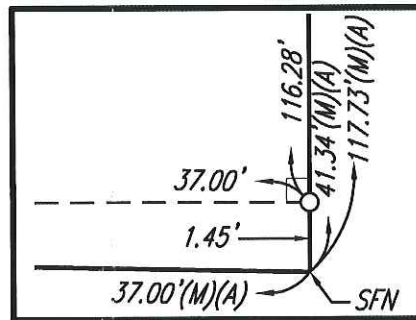
- (A) BOOK 42 M&P 24, SJCR.
- (M) MEASURED ON THIS SURVEY

**NOTES:**

1. ALL REFERENCES ARE MADE TO SAN JOAQUIN COUNTY RECORDS
2. ALL BEARINGS & DISTANCES ARE MEASURED UNLESS NOTED OTHERWISE.



**DETAIL "A"**  
SCALE: 1"=4'



**DETAIL "B"**  
SCALE: 1"=4'



SCALE: 1" = 40'