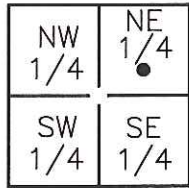


# CORNER RECORD

Document Number CR-15-216  
County of SAN JOAQUIN, California

City of ESCALON

Brief Legal Description MONUMENT AT THE INTERSECTION OF FIRST STREET AND OKLAHOMA AVENUE  
LOCATED IN THE NORTHEAST QUARTER OF SECTION 5, T.2S, R.9E, M.D.B.&M.



### CORNER TYPE

Government Corner  Control   
 Meander  Property   
 Rancho  Other

### COORDINATES (Optional)

N \_\_\_\_\_  
 E \_\_\_\_\_  
 Zone \_\_\_\_\_ NAD27  NAD83   
 NAD83 Epoch \_\_\_\_\_  
 Elev. \_\_\_\_\_  
 Vert. Datum: NVGD29  NVGD88   
 Meas. Units: Metric  Imperial

SEC. 5 T.2S, R.9E

Date of Survey 6-17-2015

Corner- Left as found  Found and tagged  Established  Reestablished  Rebuilt

Identification and type of corner found: Evidence used to identify or procedure used to establish or reestablish the corner:  
FOUND BOLT ±0.5' BELOW PAVEMENT NOT TAGGED AT THE INTERSECTION OF FIRST STREET AND  
OKLAHOMA AVENUE. LOCATED IN THE NORTHEAST QUARTER OF SECTION 5, T.2S, R.9E, M.D.B.&M.  
FOUND MONUMENT AS SHOWN ON RECORD OF SURVEY FILED IN BOOK 31 OF SURVEYS AT PAGE 10,  
SAN JOAQUIN COUNTY RECORDS.

A description of the physical condition of the monument as found and as set or reset: \_\_\_\_\_  
MONUMENT IS IN AN AREA OF RECONSTRUCTION, SET TIES AS SHOWN ON PAGE 2.

### SURVEYOR'S STATEMENT

This Corner Record was prepared by me or under my direction in conformance with  
 the Land Surveyors' Act on JULY 17, 2015,



Signed [Signature] P.L.S. or R.C.E. Number 6953

### COUNTY SURVEYOR'S STATEMENT

This Corner Record was received August 28, 2015 and examined  
 and filed September 14, 2015



Signed [Signature] P.L.S. or R.C.E. No: 4842

Title Acting County Surveyor

County Surveyor's Comment \_\_\_\_\_

**LEGEND:**

- ⊗ SET MONUMENT AS NOTED.
- FOUND MONUMENT AS NOTED.
- S.J.C.R. DENOTES SAN JOAQUIN COUNTY RECORDS
- R.S. DENOTES RECORD OF SURVEY
- (M) MEASURED DISTANCE. ALL DISTANCES ARE MEASURED UNLESS NOTED OTHERWISE.

**REFERENCE:**

(R1) R.S. 31-10, S.J.C.R.

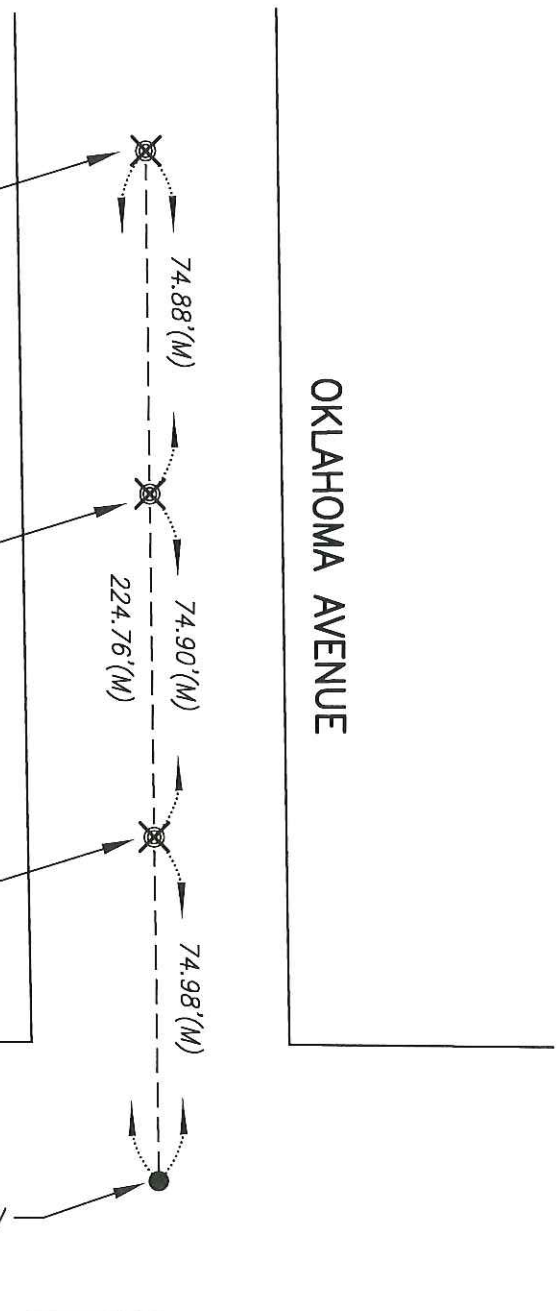


SET CONCRETE NAIL WITH BRASS TAG LS 6953 IN PAVEMENT.

SET CONCRETE NAIL WITH BRASS TAG LS 6953 IN PAVEMENT.

SET CONCRETE NAIL WITH BRASS TAG LS 6953 IN PAVEMENT.

FOUND BOLT ±0.5' BELOW PAVEMENT NOT TAGGED.  
(R1)



FIRST STREET

OKLAHOMA AVENUE