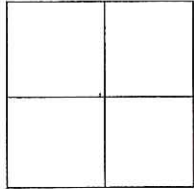


CORNER RECORD

Document Number CR-15-209  
County of San Joaquin, California

City of \_\_\_\_\_

Brief Legal Description DURHAM FERRY ROAD 7906± EAST OF KOSTER ROAD  
(WITHIN RANCHO EL PESCADERO)



CORNER TYPE

Government Corner  Control   
Meander  Property   
Rancho  Other   
Date of Survey August 27, 2015

COORDINATES (Optional)

N. \_\_\_\_\_  
E. \_\_\_\_\_  
Zone \_\_\_\_\_ NAD27  NAD83   
NAD83 Epoch \_\_\_\_\_  
Elev. \_\_\_\_\_  
Vert. Datum: NGVD29  NAVD88   
Meas. Units: Metric  Imperial

Corner - Left as found  Found and tagged  Established  Reestablished  Rebuilt

Identification and type of corner found: Evidence used to identify or procedure used to establish or reestablish the corner:  
SEE SKETCH ON BACKSIDE.

A description of the physical condition of the monument as found and as set or reset:  
SEE SKETCH ON BACKSIDE.

SURVEYOR'S STATEMENT

This Corner Record was prepared by me or under my direction in conformance with the Land Surveyors' Act on August 31, 2015.

Signed James E. Hart P.L.S. Number 8657

COUNTY SURVEYOR'S STATEMENT

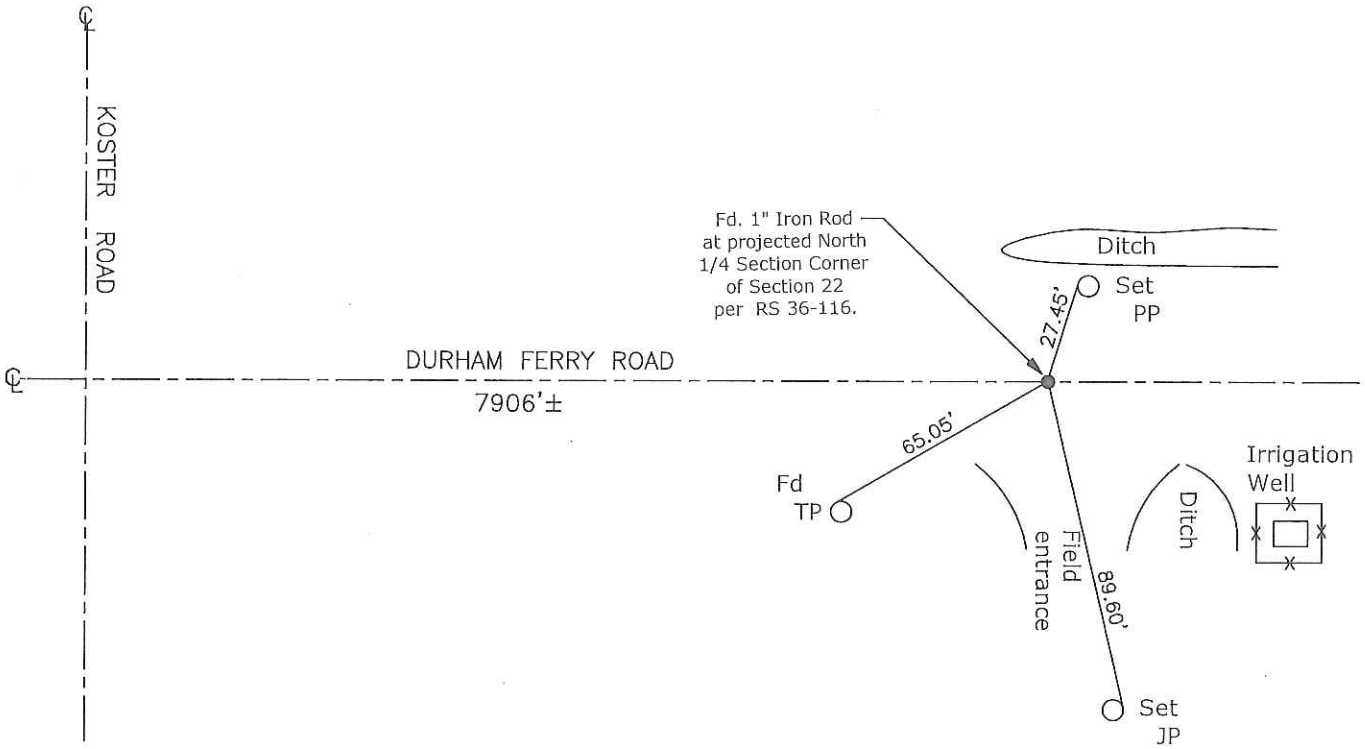
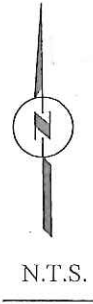
This Corner Record was received August 31, 2015 and examined and filed September 10, 2015.

Signed Warren D. Smith P.L.S. No. 4842

Title Acting County Surveyor

County Surveyor's Comment \_\_\_\_\_





Note: Found Monuments are not tagged unless otherwise noted.

"No Attempt Was Made to Verify the Monument(s)"

- Set=Conc. Nail with Brass Washer Stamped  
"S.J. Co.", unless otherwise noted
- Fd.=Found Conc. Nail with Brass Washer Stamped  
"S.J. Co.", unless otherwise noted
- CR=Corner Record
- FP=Fence Post
- JP=Joint Pole
- LP=Light Pole
- PP=Power Pole
- GP=Guy Pole
- SP=Service Pole
- TP=Telephone Pole
- S.F.N.=Searched Found Nothing
- N.T.S.=Not To Scale
- M&P=Maps & Plats
- PM=Parcel Map
- RS=Record of Survey
- FB=Field Book