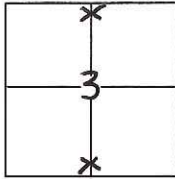


CORNER RECORD

Document Number CR-15-203
County of San Joaquin, California

City of _____
Brief Legal Description A.P.N. 093-320-06



53, T2N, R9E, MDM

CORNER TYPE

Government Corner Control
Meander Property
Rancho Other

Date of Survey June 22, 2015

COORDINATES(Optional)

N. _____
E. _____
Zone _____ NAD27 NAD83
NAD83 Epoch _____
Elev. _____
Vert. Datum: NGVD29 NADV88
Meas. Units: Metric Imperial

Corner - Left as found Found and tagged Established Reestablished Rebuilt

Identification and type of corner found: Evidence used to identify or procedure used to establish or reestablish the corner:

See Sketch

A description of the physical condition of the monument as found and as set or reset: See Sketch

SURVEYOR'S STATEMENT

This Corner Record was prepared by me or under my direction in conformance with the Land Surveyor's Act on June 25, 2015.

Signed Joe Murphy (P.L.S.) or R.C.E. No.: 7269



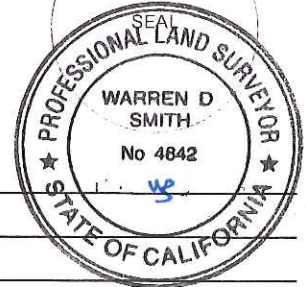
COUNTY SURVEYOR'S STATEMENT

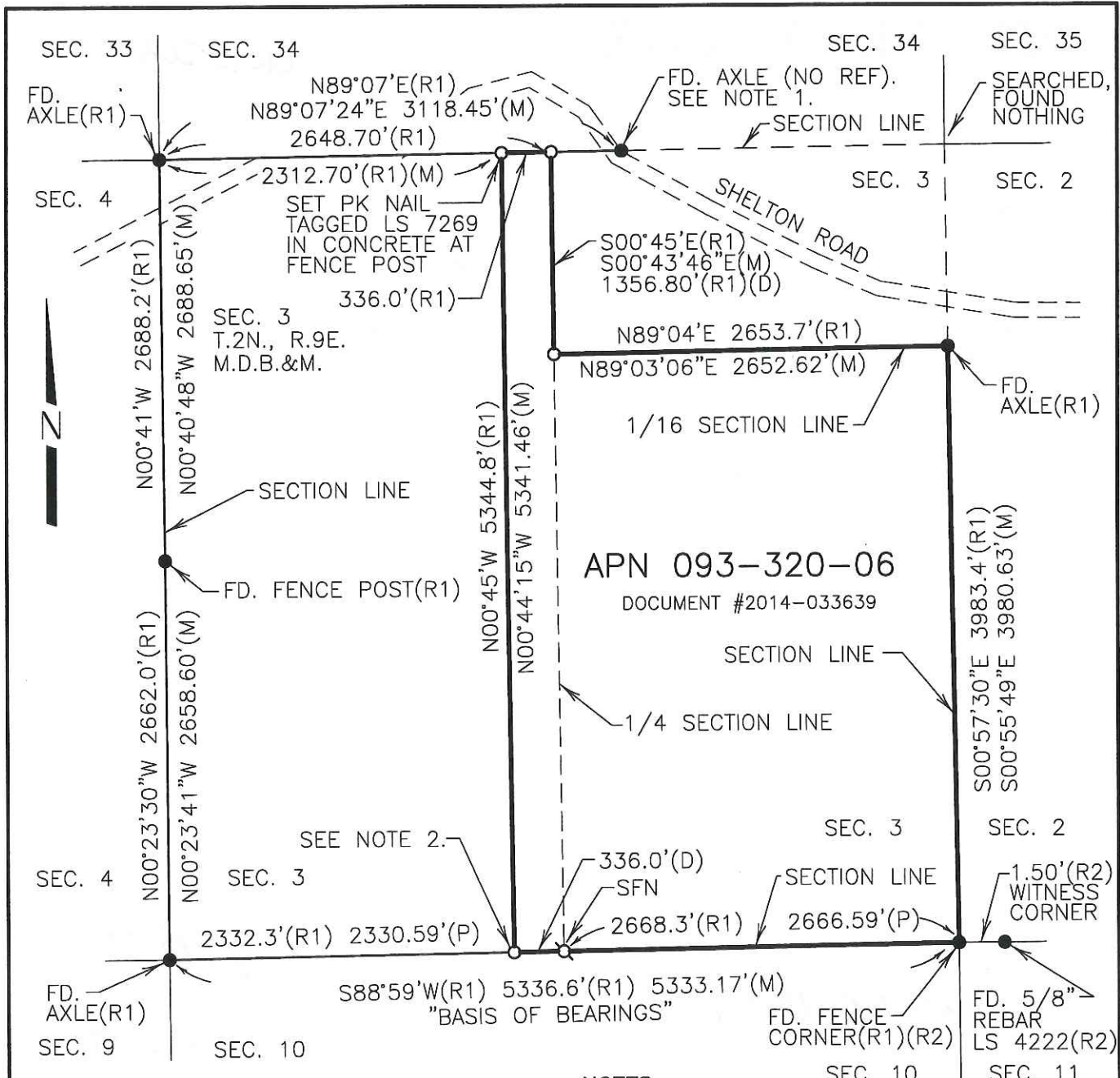
This Corner Record was received August 21, 2015 and examined and filed September 10, 2015.

Signed Warren D. Smith P.L.S. or R.C.E. No.: 4842

Title Acting County Surveyor

County Surveyor's Comment _____





REFERENCES:

- R1 UNRECORDED SURVEY –
M.A. HARROLD & E.A. CADY PROPERTY
DECEMBER 1926
CHAS. H. WIDDOWS (CHW 141-PP)
- R2 RS 32-174

LEGEND

- FOUND MONUMENT AS NOTED.
- SET 3/4" IRON ROD CAPPED LS 7269,
UNLESS OTHERWISE NOTED.
- ⊗ DIMENSION POINT
- (M) MEASURED
- (P) PRORATED
- (D) DOCUMENT #2014-033639
- SFN SEARCHED, FOUND NOTHING

NOTES:

1. FOUND AXLE LINES UP WITH FENCE LINE TO THE WEST AND THE AVENUE SEPARATING THE ORCHARDS TO THE EAST. AXLE USED FOR LINE ONLY AS THE NORTH LINE OF SECTION 3.
2. POINT IS 6.5' SOUTH OF FENCE LINE RUNNING EAST AND WEST, AND ONLINE WITH FENCE RUNNING NORTH.

SCALE: 1" = 1000'

DILLON & MURPHY
CONSULTING CIVIL ENGINEERS
ENGINEERING • PLANNING • SURVEYING
847 N. CLUFF AVENUE, SUITE A2, LODI, CALIFORNIA 95240 (209) 334-6613
1557