

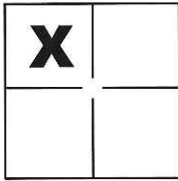
# CORNER RECORD

Document Number CR-15-202

City of Stockton

County of San Joaquin, California

Brief Legal Description Northwest Corner of Lot 34 per M. & P. 25-32, S.J.C.R.



Sec. 14, T.2N., R.6E.,  
M.D.B. & M.

### CORNER TYPE

Government Corner  Control   
 Meander  Property   
 Rancho  Other

Date of Survey June 24, 2015

### COORDINATES(Optional)

N. \_\_\_\_\_  
 E. \_\_\_\_\_  
 Zone \_\_\_\_\_ NAD27  NAD83   
 NAD83 Epoch \_\_\_\_\_  
 Elev. \_\_\_\_\_  
 Vert. Datum: NGVD29  NADV88   
 Meas. Units: Metric  Imperial

Corner - Left as found  Found and tagged  Established  Reestablished  Rebuilt

Identification and type of corner found: Evidence used to identify or procedure used to establish or reestablish the corner:

See Sheet 2

A description of the physical condition of the monument as found and as set or reset:

See Sheet 2

### SURVEYOR'S STATEMENT

This Corner Record was prepared by me or under my direction in conformance with

the Land Surveyor's Act on Aug. 18, 2015.

Signed Michael L. Quattaro P.L.S. or R.C.E. No.: L.S. 4450



### COUNTY SURVEYOR'S STATEMENT

This Corner Record was received August 19, 2015 and examined

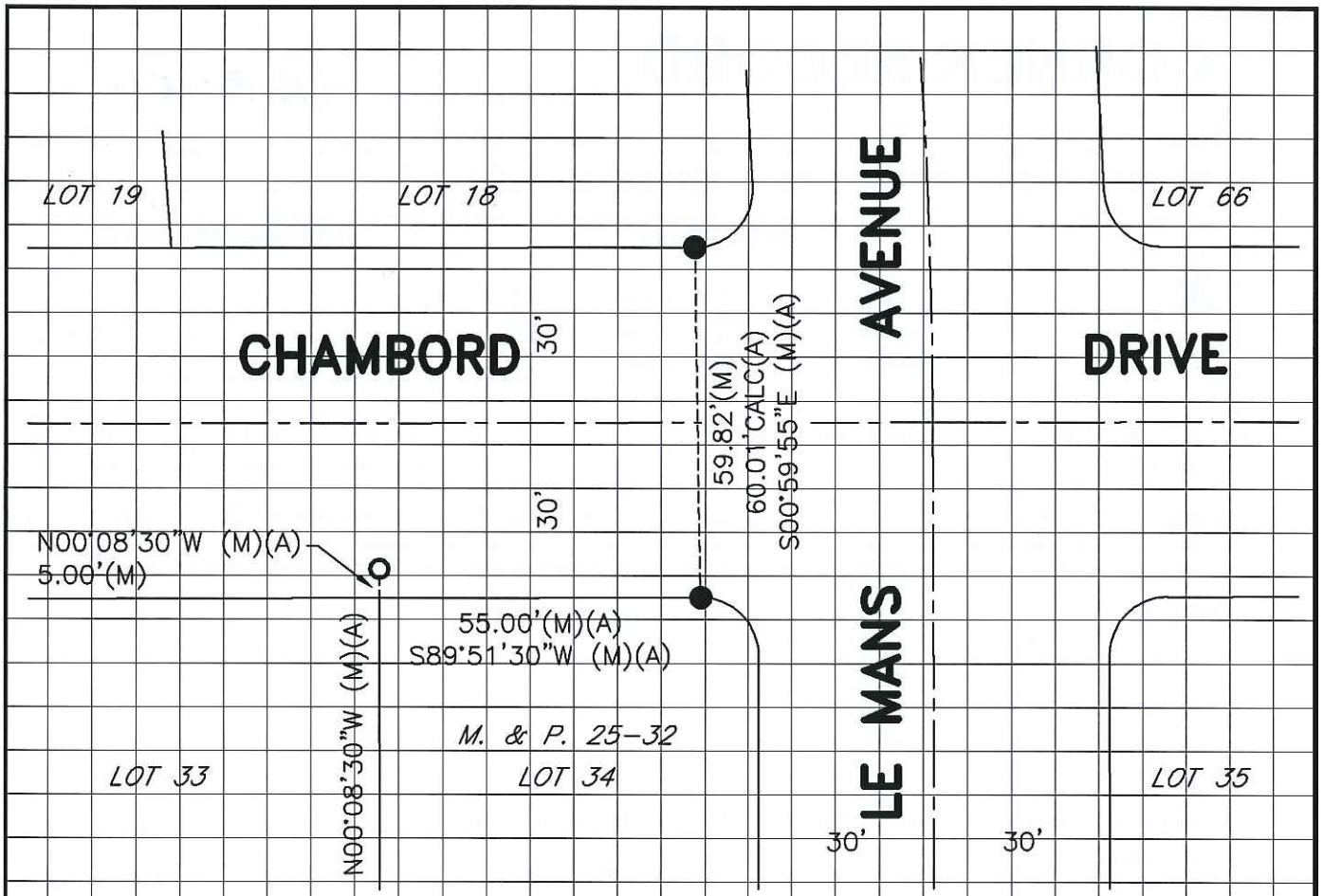
and filed September 10, 2015.

Signed Warren D. Smith P.L.S. or R.C.E. No.: 4842

Title Acting County Surveyor

County Surveyor's Comment \_\_\_\_\_





## LEGEND

- INDICATES FOUND 3/4" X 24" REBAR BENT, DUG TO STRAIGHT SECTION AND REPLACED WITH 3/4" IRON PIPE W/PLASTIC CAP STAMPED L.S. 4450, CALLED 3/4" IRON PIN PER (A)
- INDICATES SET 1" DIA. BRASS DISC STAMPED L.S. 4450
- FD. INDICATES FOUND ON THIS SURVEY
- M. & P. INDICATES MAPS AND PLATS, BOOK AND PAGE, S.J.C.R.
- S.J.C.R. INDICATES SAN JOAQUIN COUNTY RECORDS

## REFERENCE

(A) M. & P. 25-32, S.J.C.R.



SCALE: 1" = 30'  
2015-99

## NOTE

NO PRE-CONSTRUCTION CORNER RECORD WAS PREPARED PER SEC. 8771, THIS CORNER RECORD IS POST-CONSTRUCTION AND ESTABLISHES THE POSITION OF THE DESTROYED WITNESS CORNER WITH SHOWN MONUMENTS.