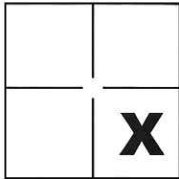


CORNER RECORD

Document Number CR-15-200
 City of Tracy County of San Joaquin, California

Brief Legal Description North Line of Parcel "A" as shown on P.M. 2-136, S.J.C.R.



Sec. 33, T.2S., R.5E.,
M.D.B. & M.

CORNER TYPE

Government Corner Control
 Meander Property
 Rancho Other

Date of Survey June 23, 2015

COORDINATES(Optional)

N. _____
 E. _____
 Zone _____ NAD27 NAD83
 NAD83 Epoch _____
 Elev. _____
 Vert. Datum: NGVD29 NADV88
 Meas. Units: Metric Imperial

Corner - Left as found Found and tagged Established Reestablished Rebuilt

Identification and type of corner found: Evidence used to identify or procedure used to establish or reestablish the corner:

See Sheet 2

A description of the physical condition of the monument as found and as set or reset:

See Sheet 2

SURVEYOR'S STATEMENT

This Corner Record was prepared by me or under my direction in conformance with
 the Land Surveyor's Act on Aug. 18, 2015.

Signed Michael L. Quatador P.L.S. or R.C.E. No.: L.S. 4450



COUNTY SURVEYOR'S STATEMENT

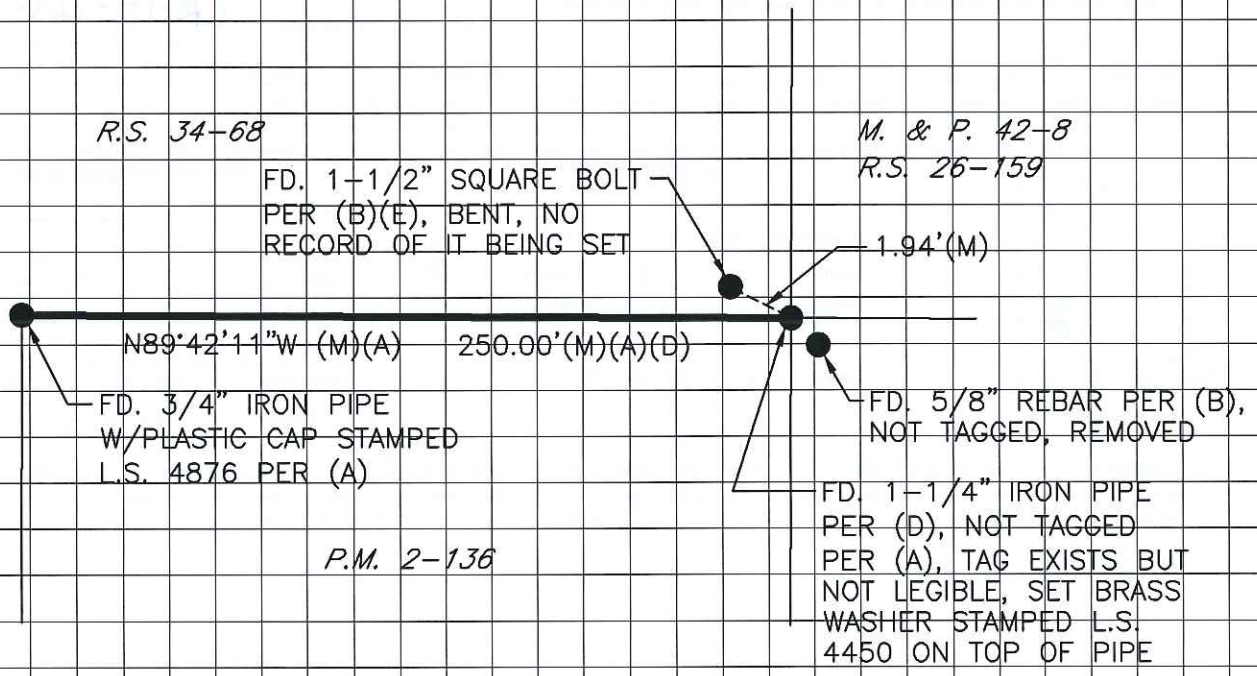
This Corner Record was received August 19, 2015 and examined
 and filed September 10, 2015.

Signed Warren D. Smith P.L.S. or R.C.E. No.: 4842

Title Acting County Surveyor

County Surveyor's Comment _____





SCALE: 1" = 60'
2015-124

LEGEND

- INDICATES FOUND MONUMENT AS NOTED
- FD. INDICATES FOUND ON THIS SURVEY
- R.S. INDICATES RECORD OF SURVEY, BOOK AND PAGE, S.J.C.R.
- M. & P. INDICATES MAPS AND PLATS, BOOK AND PAGE, S.J.C.R.
- P.M. INDICATES PARCEL MAP, BOOK AND PAGE, S.J.C.R.
- S.J.C.R. INDICATES SAN JOAQUIN COUNTY RECORDS

REFERENCES

- (A) R.S. 34-68, S.J.C.R.
- (B) M. & P. 42-8, S.J.C.R.
- (C) R.S. 26-159, S.J.C.R.
- (D) P.M. 2-136, S.J.C.R.
- (E) P.M. 25-172, S.J.C.R.