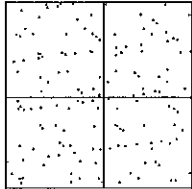


# CORNER RECORD

Document Number CR-15-194  
County of San Joaquin, California

City of \_\_\_\_\_

Brief Legal Description CARLIN ROAD 291± EAST OF CROCKER ROAD  
(WITHIN SECTION 7, TOWNSHIP 1 SOUTH, RANGE 6 EAST, MOUNT DIABLO BASE & MERIDIAN)



### CORNER TYPE

Government Corner  Control   
Meander  Property   
Rancho  Other   
Date of Survey August 19, 2015

### COORDINATES (Optional)

N. \_\_\_\_\_  
E. \_\_\_\_\_  
Zone \_\_\_\_\_ NAD27  NAD83   
NAD83 Epoch \_\_\_\_\_  
Elev. \_\_\_\_\_  
Vert. Datum: NGVD29  NAVD88   
Meas. Units: Metric  Imperial

Corner - Left as found  Found and tagged  Established  Reestablished  Rebuilt

Identification and type of corner found: Evidence used to identify or procedure used to establish or reestablish the corner:  
SEE SKETCH ON BACKSIDE.

A description of the physical condition of the monument as found and as set or reset:  
SEE SKETCH ON BACKSIDE.

### SURVEYOR'S STATEMENT

This Corner Record was prepared by me or under my direction in conformance with the Land Surveyors' Act on August 27, 2015.

Signed James E. Hart P.L.S. Number 8657

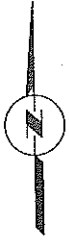
### COUNTY SURVEYOR'S STATEMENT

This Corner Record was received August 27, 2015 and examined and filed September 8, 2015.

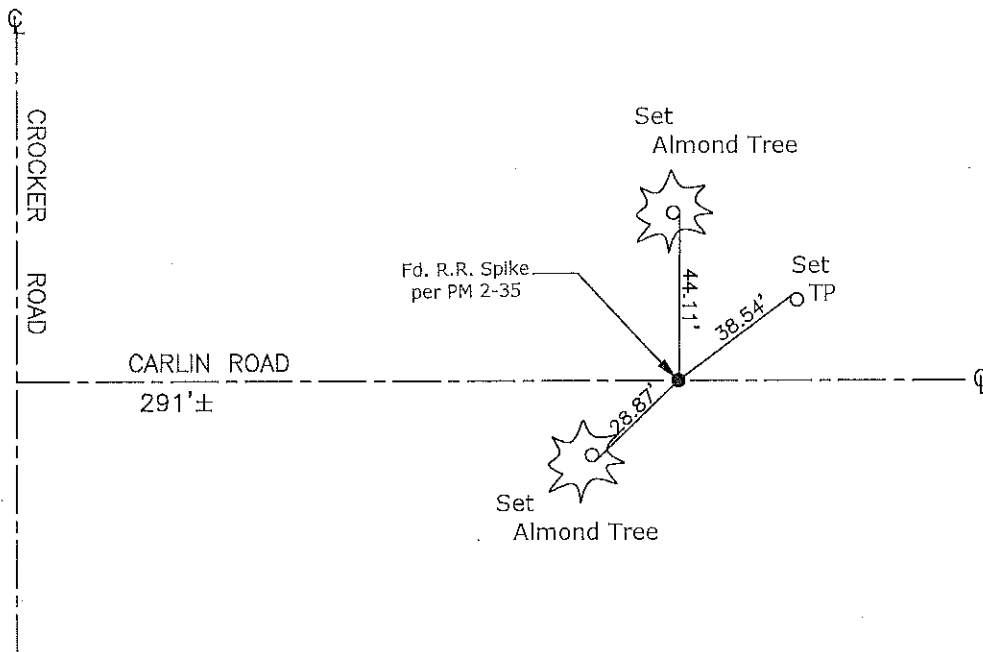
Signed Warren D. Smith P.L.S. No. 4842  
Title Acting County Surveyor

County Surveyor's Comment \_\_\_\_\_





N.T.S.



Note: Found Monuments are not tagged unless otherwise noted.

"No Attempt Was Made to Verify the Monument(s)"

- Set=Conc. Nail with Brass Washer Stamped  
"S.J. Co.", unless otherwise noted
- Fd.=Found Conc. Nail with Brass Washer Stamped  
"S.J. Co.", unless otherwise noted
- CR=Corner Record
- FP=Fence Post
- JP=Joint Pole
- LP=Light Pole
- PP=Power Pole
- GP=Guy Pole
- SP=Service Pole
- TP=Telephone Pole
- S.F.N.=Searched Found Nothing
- N.T.S.=Not To Scale
- M&P=Maps & Plats
- PM=Parcel Map
- RS=Record of Survey
- FB=Field Book