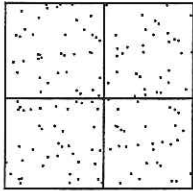


CORNER RECORD

Document Number CR-15-171
County of San Joaquin, California

City of _____

Brief Legal Description NADOTTI ROAD 1304± WEST OF DARRIGO LANE
(WITHIN SECTION 54, C.M. WEBER GRANT)



CORNER TYPE

Government Corner Control
Meander Property
Rancho Other

Date of Survey August 7, 2015

COORDINATES (Optional)

N. _____
E. _____
Zone _____ NAD27 NAD83
NAD83 Epoch _____
Elev. _____
Vert. Datum: NGVD29 NAVD88
Meas. Units: Metric Imperial

Corner - Left as found Found and tagged Established Reestablished Rebuilt

Identification and type of corner found: Evidence used to identify or procedure used to establish or reestablish the corner:
SEE SKETCH ON BACKSIDE.

A description of the physical condition of the monument as found and as set or reset:
SEE SKETCH ON BACKSIDE.

SURVEYOR'S STATEMENT

This Corner Record was prepared by me or under my direction in conformance with
the Land Surveyors' Act on August 13, 2015.

Signed James E. Hart P.L.S. Number 8657

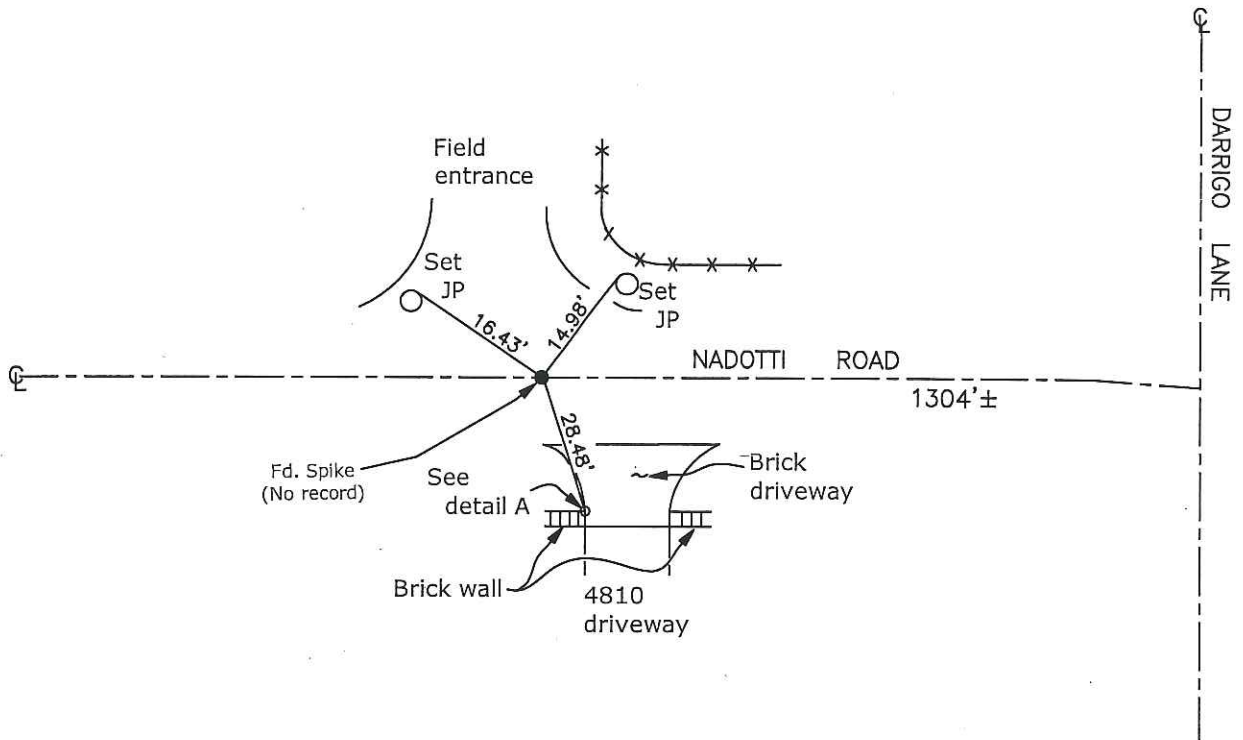
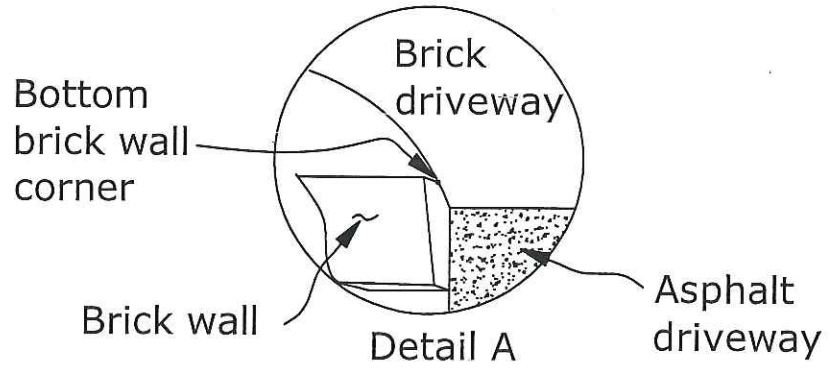
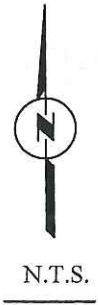
COUNTY SURVEYOR'S STATEMENT

This Corner Record was received August 18, 2015 and examined
and filed August 26, 2015.

Signed Warren D. Smith P.L.S. No. 4842
Title Acting County Surveyor

County Surveyor's Comment _____





Note: Found Monuments are not tagged unless otherwise noted.

"No Attempt Was Made to Verify the Monument(s)"

- Set=Conc. Nail with Brass Washer Stamped
"S.J. Co.", unless otherwise noted
- Fd.=Found Conc. Nail with Brass Washer Stamped
"S.J. Co.", unless otherwise noted
- CR=Corner Record
- FP=Fence Post
- JP=Joint Pole
- LP=Light Pole
- PP=Power Pole
- GP=Guy Pole
- SP=Service Pole
- TP=Telephone Pole
- S.F.N.=Searched Found Nothing
- N.T.S.=Not To Scale
- M&P=Maps & Plats
- PM=Parcel Map
- RS=Record of Survey
- FB=Field Book