

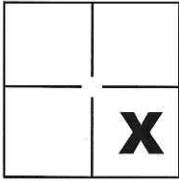
CORNER RECORD

Document Number CR-15-136

City of _____

County of San Joaquin, California

Brief Legal Description North and East Line of Parcel "A" as shown on P.M. 12-193, S.J.C.R.



Sec. 23, T.2S., R.7E.,
M.D.B. & M.

CORNER TYPE

Government Corner Control
 Meander Property
 Rancho Other

Date of Survey June 20, 2015

COORDINATES(Optional)

N. _____
 E. _____
 Zone _____ NAD27 NAD83
 NAD83 Epoch _____
 Elev. _____
 Vert. Datum: NGVD29 NADV88
 Meas. Units: Metric Imperial

Corner - Left as found Found and tagged Established Reestablished Rebuilt

Identification and type of corner found: Evidence used to identify or procedure used to establish or reestablish the corner:

See Sheet 2

A description of the physical condition of the monument as found and as set or reset: _____

See Sheet 2

SURVEYOR'S STATEMENT

This Corner Record was prepared by me or under my direction in conformance with
 the Land Surveyor's Act on July 13, 2015.

Signed Michael L. Quaratoro P.L.S. or R.C.E. No.: L.S. 4450



COUNTY SURVEYOR'S STATEMENT

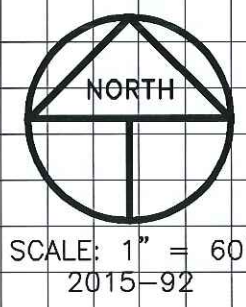
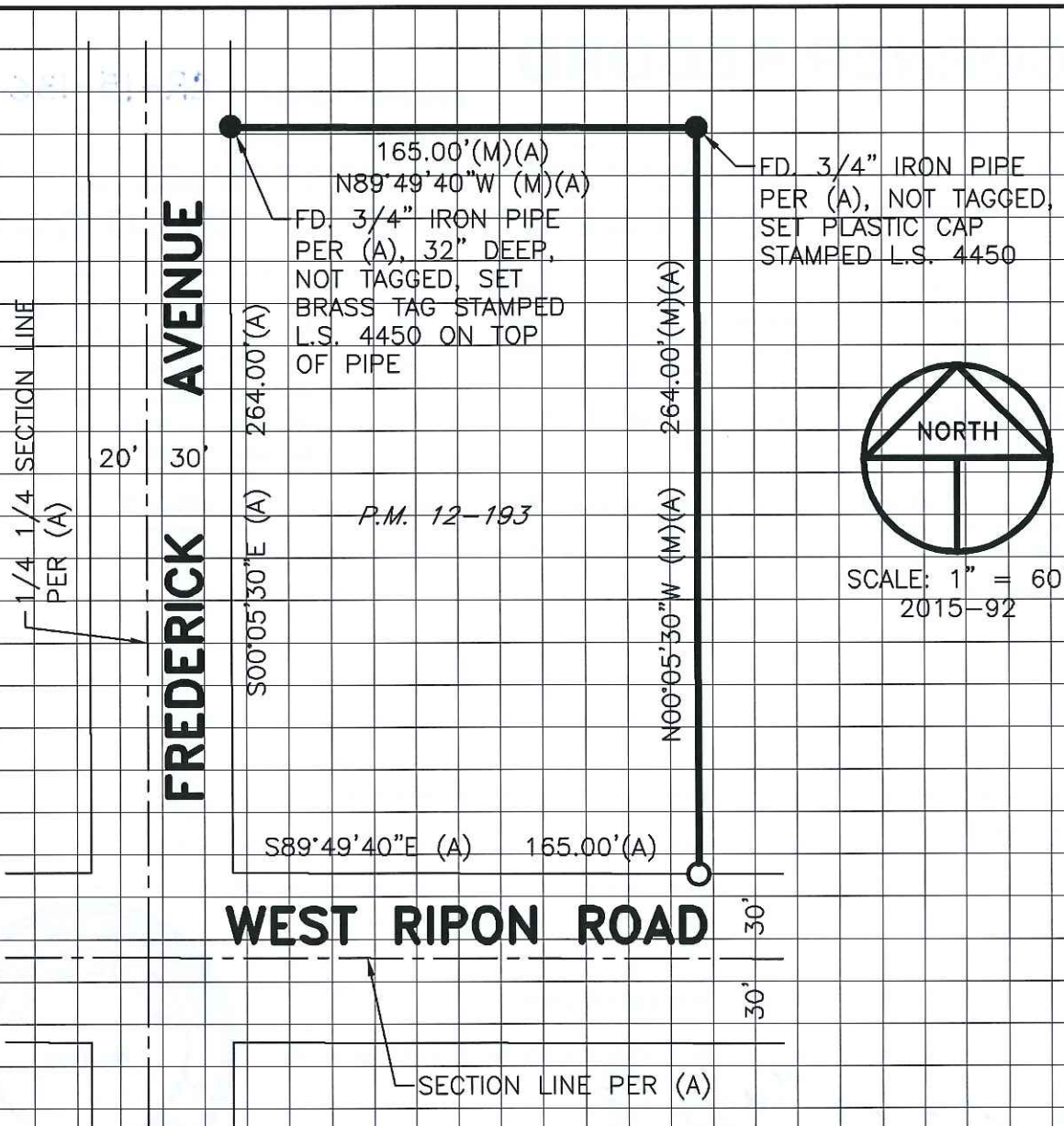
This Corner Record was received August 11, 2015 and examined
 and filed August 18, 2015.

Signed Warren D. Smith P.L.S. or R.C.E. No.: 4842

Title Acting County Surveyor

County Surveyor's Comment _____





LEGEND

- INDICATES FOUND MONUMENT AS NOTED
- INDICATES FOUND BENT 3/4" IRON PIPE, REPLACED WITH 3/4" IRON PIPE W/PLASTIC CAP STAMPED L.S. 4450.
- FD. INDICATES FOUND ON THIS SURVEY
- P.M. INDICATES PARCEL MAP, BOOK AND PAGE, S.J.C.R.
- S.J.C.R. INDICATES SAN JOAQUIN COUNTY RECORDS

REFERENCE

(A) P.M. 12-193, S.J.C.R.