

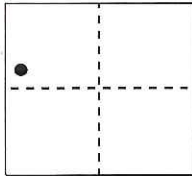
# CORNER RECORD

Document Number CR-15-104

City of \_\_\_\_\_

County of San Joaquin, California

Brief Legal Description Found EBMUD monument in aqueduct R/W, near 7493 W. Jacobs Road.



NW ¼ SEC. 11,  
T1N, R5E. MDM

### CORNER TYPE

Government Corner  Control   
Meander  Property   
Rancho  Other

Date of Survey April 2, 2014

### COORDINATES (Optional)

N. \_\_\_\_\_  
E. \_\_\_\_\_  
Zone \_\_\_\_\_ NAD27  NAD83   
NAD83 Epoch \_\_\_\_\_  
Elev. \_\_\_\_\_  
Vert. Datum: NGVD29  NAVD88   
Meas. Units: Metric  Imperial

Pre-Construction (water line) Corner Record

Corner - Left as found  Found and tagged  Established  Reestablished  Rebuilt

Identification and type of corner found: Evidence used to identify or procedure used to establish or reestablish the corner:  
An existing East Bay Municipal Utility District (EBMUD) brass disc monument, as noted on Page 2, was found on top of a concrete manway structure marking the centerline of the existing aqueduct and control for the corridor R/W.

A description of the physical condition of the monument as found and as set or reset:  
The found monument was referenced with 4 RPs representing two intersecting lines.

Reference EBMUD Field Book 4480, Page 33 (Poulsen/Holman)

### SURVEYOR'S STATEMENT

This Corner Record was prepared by me or under my direction in conformance with the Professional Land Surveyor's Act on June 30, 2015

Signed R. Lee Hixson P.L.S or R.C.E. No. 4806



### COUNTY SURVEYOR'S STATEMENT

This Corner Record was received July 3, 2015  
and examined and filed August 6, 2015

Signed Warren D. Smith P.L.S or R.C.E. No. 4842

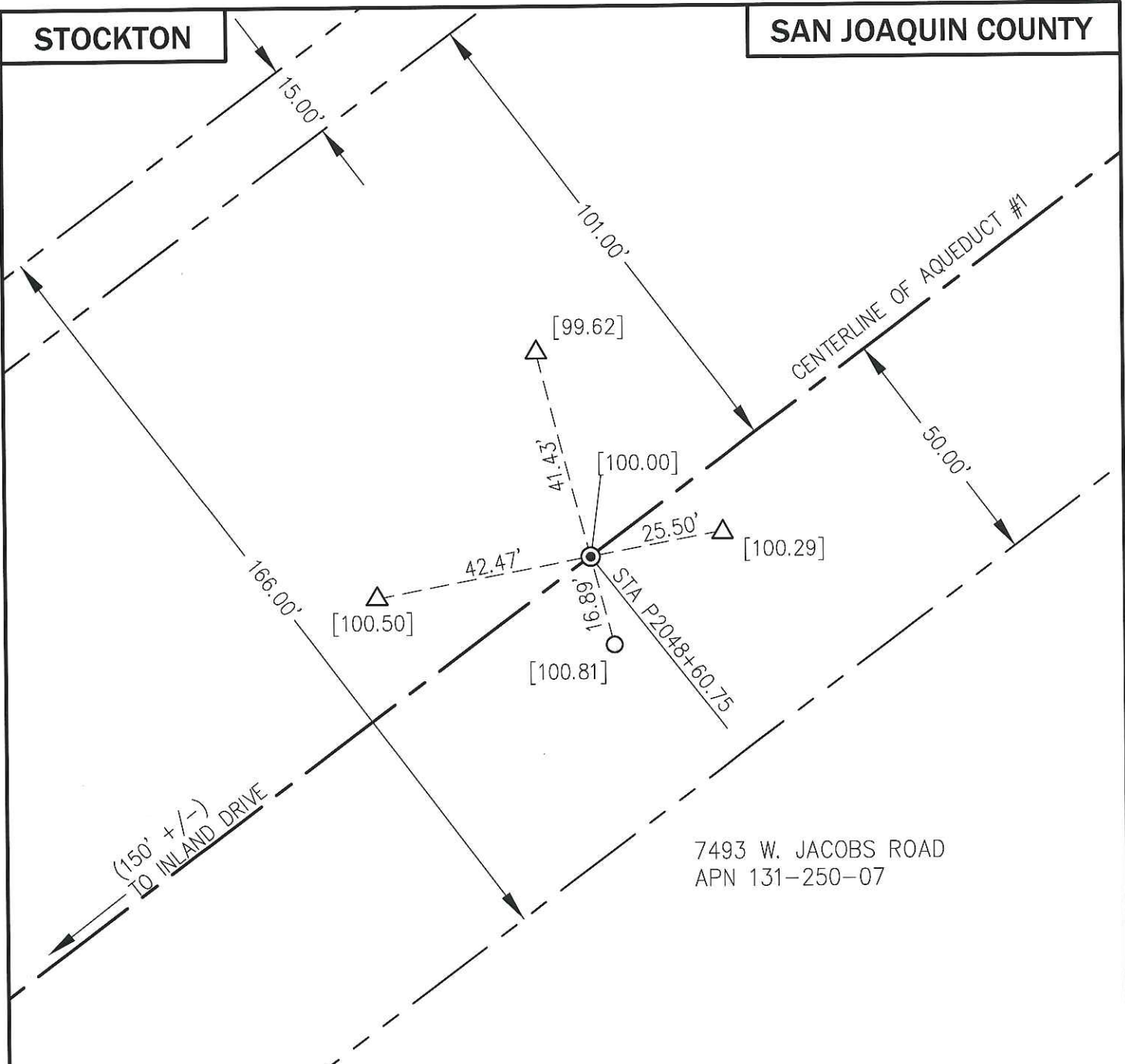
Title Acting County Surveyor



County Surveyor's Comment: \_\_\_\_\_

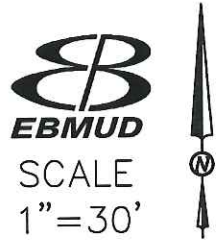
STOCKTON

SAN JOAQUIN COUNTY



### LEGEND

- ⊙ FOUND 2-1/2" BRASS PLATE ON CONCRETE MANWAY PER EBMUD R/W MAP 4195-G-104; STAMPED "EBMUD STA. P2048+60.75/H2048+40.36 ELEV. -6.51" (AQUEDUCT DATUM)
- △ SET 1/2" REBAR IN DIRT WITH YELLOW PLASTIC CAP STAMPED "EBMUD MON RP"
- SET PUNCH IN METAL HATCHWAY
- [ ] ASSUMED ELEVATION (MEASURED FROM REFERENCED MONUMENT USING A LEICA DNA10 DIGITAL LEVEL)



**ADDRESS:** 7493 W. JACOBS RD.  
**APN:** 131-250-07

**CR#**

**CR**