

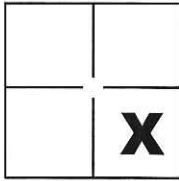
CORNER RECORD

Document Number CR-15-76

City of _____

County of San Joaquin, California

Brief Legal Description Portion of Centerline of Kingdon Road in Section 14, T.3N., R.5E., M.D.B. & M.



CORNER TYPE

Government Corner Control
 Meander Property
 Rancho Other

COORDINATES(Optional)

N. _____
 E. _____
 Zone _____ NAD27 NAD83
 NAD83 Epoch _____
 Elev. _____
 Vert. Datum: NGVD29 NADV88
 Meas. Units: Metric Imperial

Sec. 14, T.3N., R.5E.,
M.D.B. & M.

Date of Survey June 13, 2015

Corner - Left as found Found and tagged Established Reestablished Rebuilt

Identification and type of corner found: Evidence used to identify or procedure used to establish or reestablish the corner:

See Sheet 2

A description of the physical condition of the monument as found and as set or reset: _____

See Sheet 2

SURVEYOR'S STATEMENT

This Corner Record was prepared by me or under my direction in conformance with the Land Surveyor's Act on June 16, 2015.

Signed Michael L. Quaranta P.L.S. or R.C.E. No.: _____ L.S. 4450



COUNTY SURVEYOR'S STATEMENT

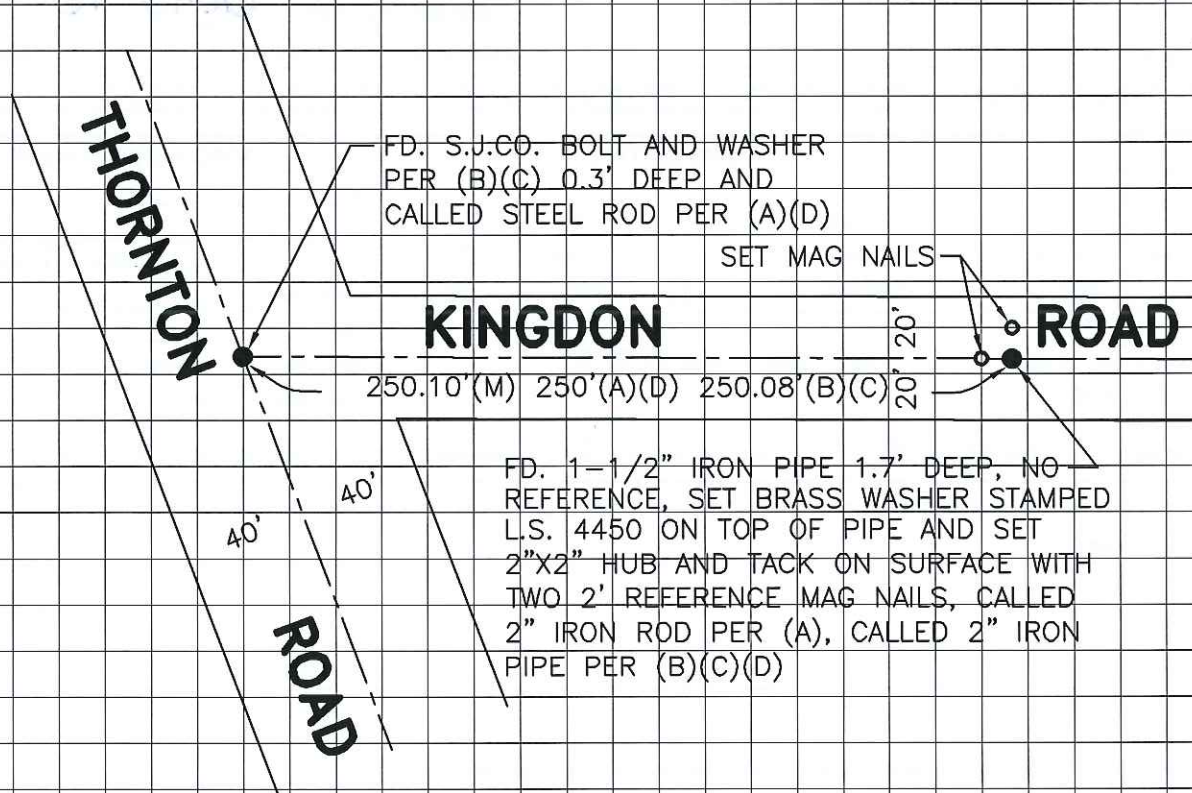
This Corner Record was received July 8, 2015 and examined and filed July 17, 2015.

Signed Warren D. Smith P.L.S. or R.C.E. No.: 4842

Title Acting County Surveyor

County Surveyor's Comment _____



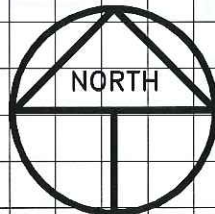


LEGEND

- — INDICATES FOUND MONUMENT AS NOTED
- FD. INDICATES FOUND ON THIS SURVEY
- F.B. INDICATES FIELD BOOK, BOOK AND PAGE, SAN JOAQUIN COUNTY SURVEYORS RECORDS
- R.S. INDICATES RECORD OF SURVEY, BOOK AND PAGE, S.J.C.R.
- S.J.C.R. INDICATES SAN JOAQUIN COUNTY RECORDS

REFERENCES

- (A) F.B. 340-79, S.J.C.S.R.
- (B) F.B. 310-76, S.J.C.S.R.
- (C) R.S. 6-269, S.J.C.R.
- (D) F.B. 631-52, S.J.C.S.R.



SCALE: 1" = 60'
2015-50