

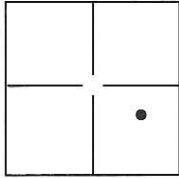
CORNER RECORD

Document Number CR-15-74

City of _____

County of San Joaquin, California

Brief Legal Description A.P.N. 089-110-10 (Lot 22 M&P 5-42)



CORNER TYPE

Government Corner Control
Meander Property
Rancho Other

COORDINATES(Optional)

N. _____
E. _____
Zone _____ NAD27 NAD83
NAD83 Epoch _____
Elev. _____
Vert. Datum: NGVD29 NADV88
Meas. Units: Metric Imperial

S23, T2N, R7E, MDB&M

Date of Survey May 29, 2015

Corner - Left as found Found and tagged Established Reestablished Rebuilt

Identification and type of corner found: Evidence used to identify or procedure used to establish or reestablish the corner:

See Sketch

A description of the physical condition of the monument as found and as set or reset: See Sketch

SURVEYOR'S STATEMENT

This Corner Record was prepared by me or under my direction in conformance with

the Land Surveyor's Act on June 1, 2015.

Signed Joe Murray P.L.S. or R.C.E. No.: 7269



COUNTY SURVEYOR'S STATEMENT

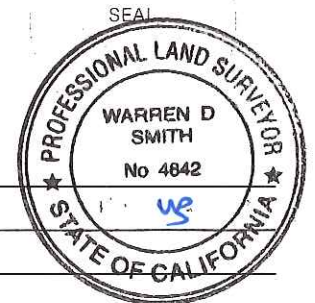
This Corner Record was received June 30, 2015 and examined

and filed July 8, 2015.

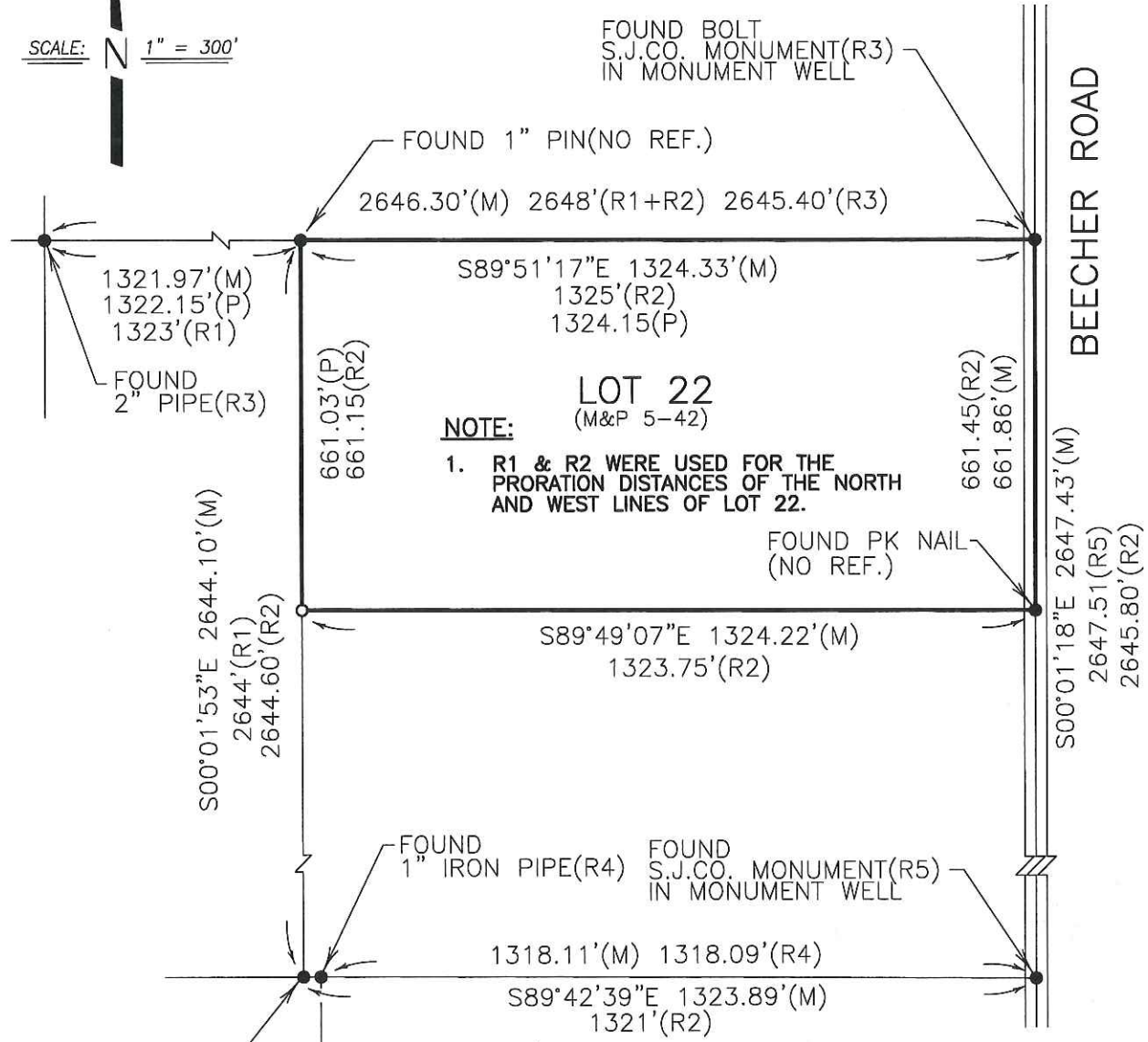
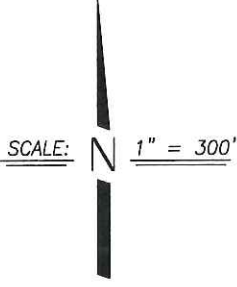
Signed Warren D. Smith P.L.S. or R.C.E. No.: 4842

Title Acting County Surveyor

County Surveyor's Comment _____



AT-0130



LEGEND

- FOUND MONUMENT AS NOTED.
- SET 3/4" IRON ROD CAPPED LS 7269
- (M) MEASURED
- (P) PRORATED

REFERENCES:

- R1 UNRECORDED SURVEY – MURRAY PROPERTY NOVEMBER 1916 BUDD & WIDDOWS (CHW DD-33)
- R2 M&P 5-42
- R3 RS 24-62
- R4 RS 22-90
- R5 PM 11-67

DILLON & MURPHY
CONSULTING CIVIL ENGINEERS
ENGINEERING • PLANNING • SURVEYING
847 N. CLUFF AVENUE, SUITE A2, LODI, CALIFORNIA 95240 (209) 334-6613
1551