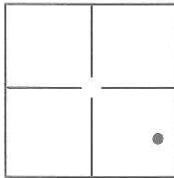


# CORNER RECORD

Document Number CR-15-61  
County of San Joaquin, California

City of \_\_\_\_\_

Brief Legal Description A.P.N. 097-210-20 (Lots 41, 42 & 43 of M&P 13-120)



S20, T2N, R6E, MDB&M

### CORNER TYPE

Government Corner  Control   
Meander  Property   
Rancho  Other

Date of Survey May 5, 2015

### COORDINATES(Optional)

N. \_\_\_\_\_  
E. \_\_\_\_\_  
Zone \_\_\_\_\_ NAD27  NAD83   
NAD83 Epoch \_\_\_\_\_  
Elev. \_\_\_\_\_  
Vert. Datum: NGVD29  NADV88   
Meas. Units: Metric  Imperial

Corner - Left as found  Found and tagged  Established  Reestablished  Rebuilt

Identification and type of corner found: Evidence used to identify or procedure used to establish or reestablish the corner:

See Sketch

A description of the physical condition of the monument as found and as set or reset: See Sketch

### SURVEYOR'S STATEMENT

This Corner Record was prepared by me or under my direction in conformance with the Land Surveyor's Act on May 21, 2015.

Signed Joe Murphy (P.L.S.) or R.C.E. No.: 7269



### COUNTY SURVEYOR'S STATEMENT

This Corner Record was received June 2, 2015 and examined and filed June 17, 2015.

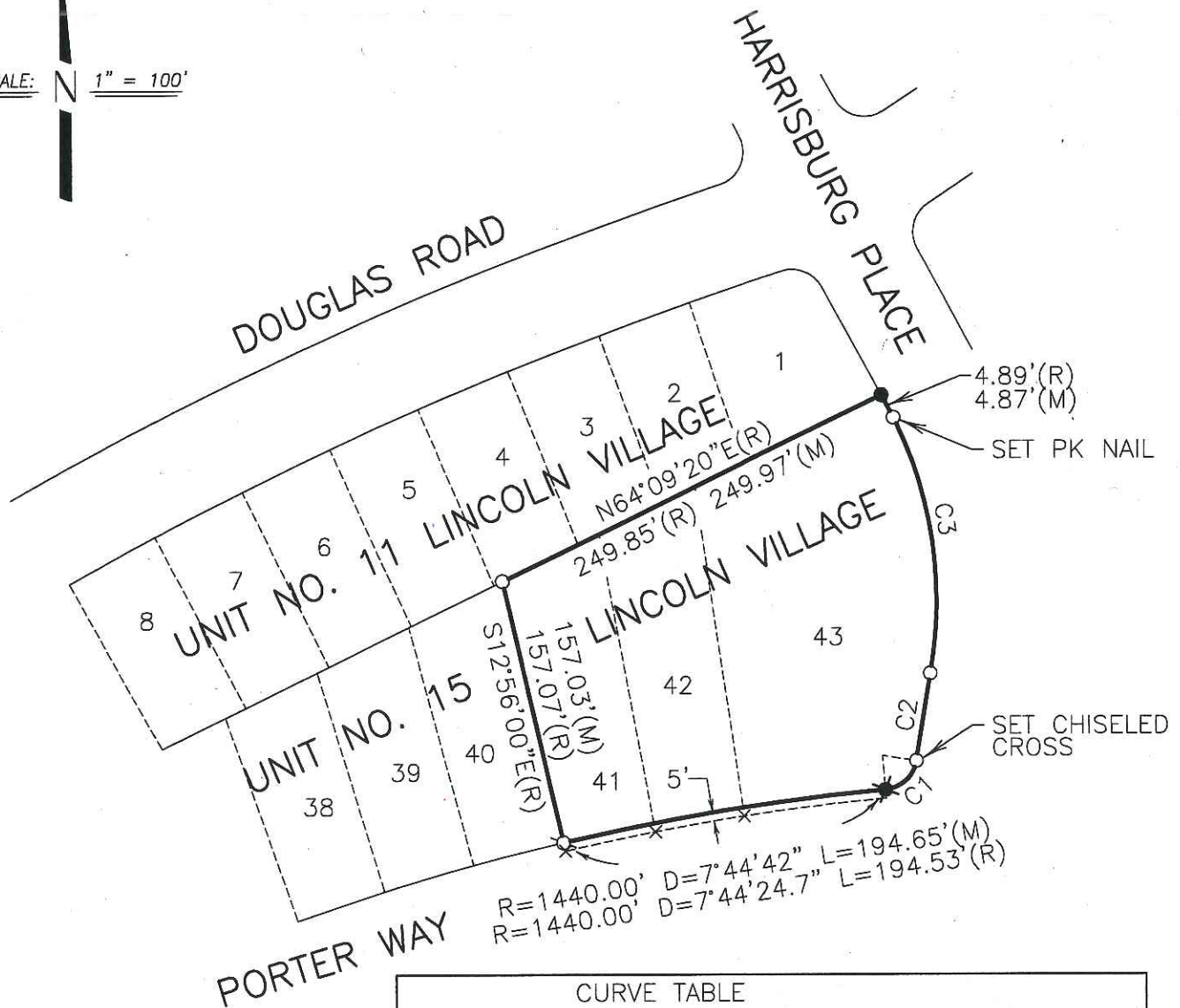
Signed Warren D. Smith P.L.S. or R.C.E. No.: 4842

Title Acting County Surveyor

County Surveyor's Comment \_\_\_\_\_



SCALE:  $1" = 100'$



CURVE TABLE			
CURVE	RADIUS	DELTA	LENGTH
C1	20.00'(R)	76°20'20.4\"(R)	26.65'(R)
C2	1700.00'(R)	1°44'55.7\"(R)	51.89'(R)
C2	240.00'(R)	39°13'00\"(R)	164.27'(R)

**LEGEND**

- SET 3/4" IRON ROD CAPPED LS 7269 UNLESS OTHERWISE NOTED
- ⊗ DIMENSION POINT
- ★ FOUND 2" PIPE (NO REFERENCE)
- FOUND 1" IRON ROD(R)
- × FOUND CHISELED CROSS IN WALK 5' FROM PROPERTY CORNER
- (M) MEASURED.
- (R) M&P 13-120

**DILLON & MURPHY**  
CONSULTING CIVIL ENGINEERS  
ENGINEERING • PLANNING • SURVEYING  
847 N. CLUFF AVENUE, SUITE A2, LODI, CALIFORNIA 95240 (209) 334-6613  
1526