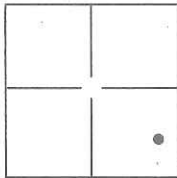


CORNER RECORD

Document Number CR-15-60
County of San Joaquin, California

City of _____
Brief Legal Description A.P.N. 097-210-20 (Lots 1-8 of M&P 13-110)



S20, T2N, R6E, MDB&M

CORNER TYPE

Government Corner Control
Meander Property
Rancho Other

Date of Survey May 5, 2015

COORDINATES(Optional)

N. _____
E. _____
Zone _____ NAD27 NAD83
NAD83 Epoch _____
Elev. _____
Vert. Datum: NGVD29 NADV88
Meas. Units: Metric Imperial

Corner - Left as found Found and tagged Established Reestablished Rebuilt

Identification and type of corner found: Evidence used to identify or procedure used to establish or reestablish the corner:

See Sketch

A description of the physical condition of the monument as found and as set or reset: See Sketch

SURVEYOR'S STATEMENT

This Corner Record was prepared by me or under my direction in conformance with

the Land Surveyor's Act on May 21, 2015

Signed Joe Murphy P.L.S. or R.C.E. No.: 7269



COUNTY SURVEYOR'S STATEMENT

This Corner Record was received June 2, 2015 and examined

and filed June 17, 2015

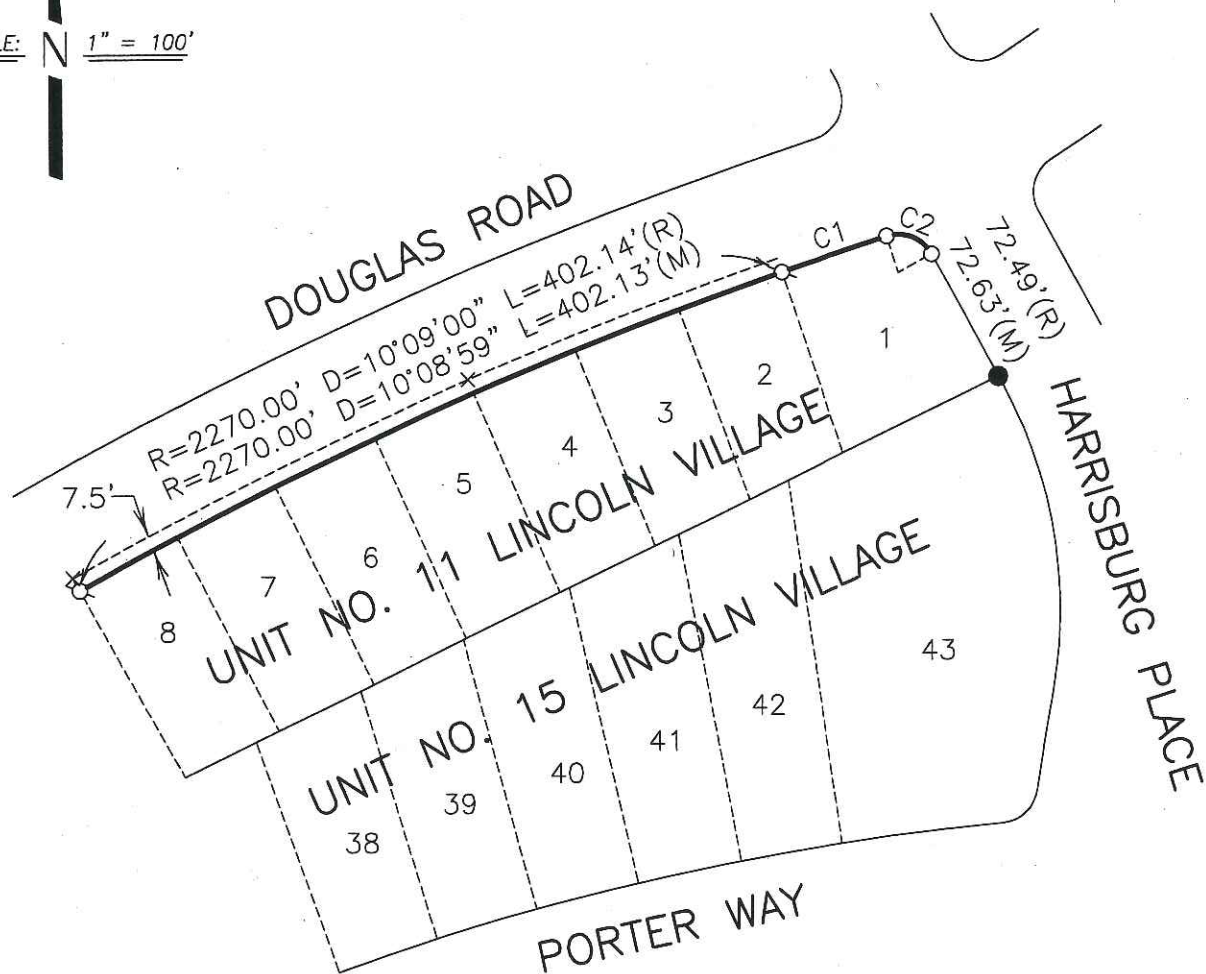
Signed Warren D. Smith P.L.S. or R.C.E. No.: 4842

Title Acting County Surveyor

County Surveyor's Comment _____



SCALE: N 1" = 100'



CURVE TABLE			
CURVE	RADIUS	DELTA	LENGTH
C1	2270.00'(R)	1°28'36.9"(R)	58.51(R)
C2	20.00'(R)	78°37'23.1"(R)	27.44'(R)

LEGEND

- SET 3/4" IRON ROD CAPPED LS 7269
- ⊙ DIMENSION POINT
- FOUND 1" IRON ROD(R)
- × FOUND CHISELED CROSS IN WALK
7.5' FROM PROPERTY CORNER
- (M) MEASURED
- (R) M&P 13-110

DILLON & MURPHY
 CONSULTING CIVIL ENGINEERS
 ENGINEERING • PLANNING • SURVEYING
 847 N. CLUFF AVENUE, SUITE A2, LODI, CALIFORNIA 95240 (209) 334-6613
 1526