

CORNER RECORD

Document Number CR-15-59
County of SAN JOAQUIN, California

City of TRACY

Brief Legal Description MONUMENTS ON ELEVENTH STREET AT MACARTHUR DRIVE.
LOCATED IN SECTIONS 21 AND 28, T.2S, R.5E, M.D.B.&M.

NW 1/4	NE 1/4
SW 1/4	SE 1/4

CORNER TYPE

Government Corner Control
 Meander Property
 Rancho Other

COORDINATES (Optional)

N _____
 E _____
 Zone _____ NAD27 NAD83
 NAD83 Epoch _____
 Elev. 51.30, 51.54 AND 51.95
 Vert. Datum: NVGD29 NVGD88
 Meas. Units: Metric Imperial

SEC. 28 T.2S, R.5E Date of Survey 5-1-2015

Corner-- Left as found Found and tagged Established Reestablished Rebuilt

Identification and type of corner found: Evidence used to identify or procedure used to establish or reestablish the corner:
FOUND MONUMENTS AS SHOWN ON PAGE 2.

A description of the physical condition of the monument as found and as set or reset: _____
MONUMENTS ARE IN AREA OF RECONSTRUCTION, SET TIES AS SHOWN ON PAGE 2.

SURVEYOR'S STATEMENT

This Corner Record was prepared by me or under my direction in conformance with
the Land Surveyors' Act on MAY 12, 2015,



Signed [Signature] P.L.S. or R.C.E. Number 6953

COUNTY SURVEYOR'S STATEMENT

This Corner Record was received May 18, 2015 and examined
and filed June 1, 2015



Signed [Signature] P.L.S. or R.C.E. No: 4842

Title Acting County Surveyor

County Surveyor's Comment _____

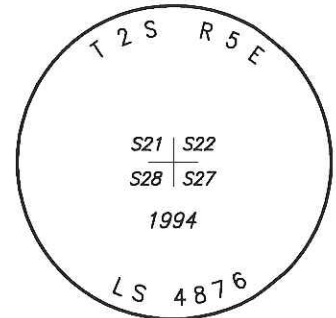
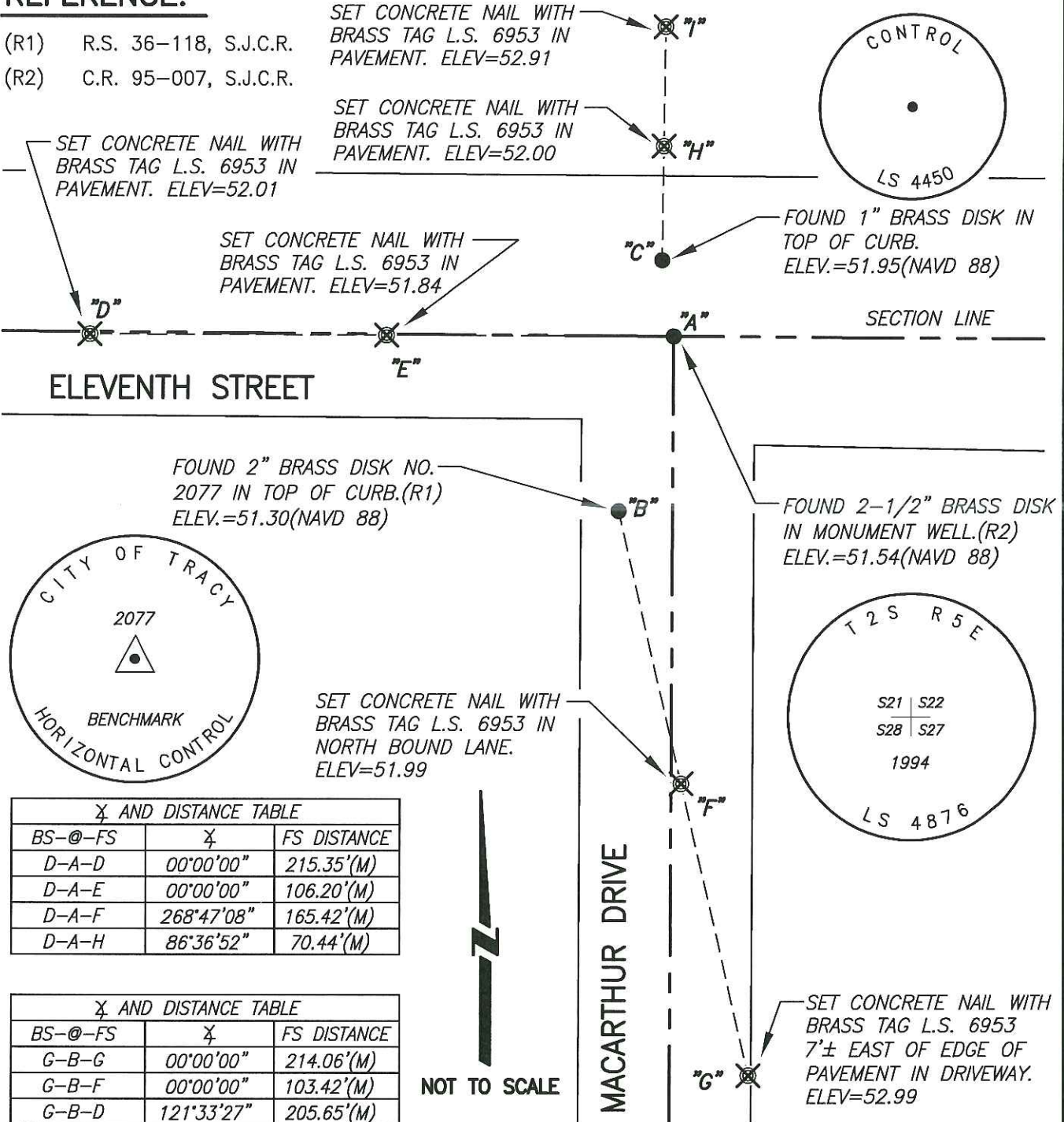
LEGEND:

- ⊗ SET MONUMENT AS NOTED.
- FOUND MONUMENT AS NOTED.
- R.S. DENOTES RECORD OF SURVEY
- C.R. DENOTES CORNER RECORD
- (M) MEASURED DISTANCE. ALL DISTANCES ARE MEASURED UNLESS NOTED OTHERWISE.

X AND DISTANCE TABLE		
BS-@-FS	X	FS DISTANCE
D-C-D	00°00'00"	212.70'(M)
D-C-H	98°05'03"	42.16'(M)
D-C-I	98°05'03"	86.33'(M)

REFERENCE:

- (R1) R.S. 36-118, S.J.C.R.
- (R2) C.R. 95-007, S.J.C.R.



X AND DISTANCE TABLE		
BS-@-FS	X	FS DISTANCE
D-A-D	00°00'00"	215.35'(M)
D-A-E	00°00'00"	106.20'(M)
D-A-F	268°47'08"	165.42'(M)
D-A-H	86°36'52"	70.44'(M)

X AND DISTANCE TABLE		
BS-@-FS	X	FS DISTANCE
G-B-G	00°00'00"	214.06'(M)
G-B-F	00°00'00"	103.42'(M)
G-B-D	121°33'27"	205.65'(M)