

# CORNER RECORD

Document Number CR-15-58  
County of SAN JOAQUIN, California

City of TRACY

Brief Legal Description MONUMENT ON THE SOUTH SIDE OF ELEVENTH STREET APPROXIMATELY 447'± EAST OF MACARTHUR DRIVE. LOCATED IN THE NORTHWEST QUARTER OF SECTION 27, T.2S, R.5E, M.D.B.&M.

NW 1/4	NE 1/4
SW 1/4	SE 1/4

### CORNER TYPE

Government Corner  Control   
 Meander  Property   
 Rancho  Other

### COORDINATES (Optional)

N \_\_\_\_\_  
 E \_\_\_\_\_  
 Zone \_\_\_\_\_ NAD27  NAD83   
 NAD83 Epoch \_\_\_\_\_  
 Elev. 51.97  
 Vert. Datum: NVGD29  NVGD88   
 Meas. Units: Metric  Imperial

SEC. 27 T.2S, R.5E Date of Survey 5-1-2015

Corner— Left as found  Found and tagged  Established  Reestablished  Rebuilt

Identification and type of corner found: Evidence used to identify or procedure used to establish or reestablish the corner:  
FOUND 6"X6" CONCRETE MONUMENT ON THE SOUTH SIDE OF ELEVENTH STREET APPROXIMATELY 447'± EAST OF MACARTHUR DRIVE. LOCATED IN THE NORTHWEST QUARTER OF SECTION 27, T.2S, R.5E, M.D.B.&M. FOUND MONUMENT AS SHOWN ON RECORD OF SURVEY FILED IN BOOK 6 OF SURVEYS AT PAGE 93, SAN JOAQUIN COUNTY RECORDS.

A description of the physical condition of the monument as found and as set or reset: \_\_\_\_\_  
MONUMENT IS IN AN AREA OF RECONSTRUCTION, SET TIES AS SHOWN ON PAGE 2.

### SURVEYOR'S STATEMENT

This Corner Record was prepared by me or under my direction in conformance with the Land Surveyors' Act on MAY 12, 2015,



Signed [Signature] P.L.S. or R.C.E. Number 6953

### COUNTY SURVEYOR'S STATEMENT

This Corner Record was received May 18, 2015 and examined and filed June 1, 2015



Signed [Signature] P.L.S. or R.C.E. No: 4842

Title Acting County Surveyor

County Surveyor's Comment \_\_\_\_\_

**LEGEND:**

- ⊗ SET MONUMENT AS NOTED.
- FOUND MONUMENT AS NOTED.
- R.S. DENOTES RECORD OF SURVEY
- (M) MEASURED DISTANCE. ALL DISTANCES ARE MEASURED UNLESS NOTED OTHERWISE.

**REFERENCE:**

(R1) R.S. 6-93, S.J.C.R.

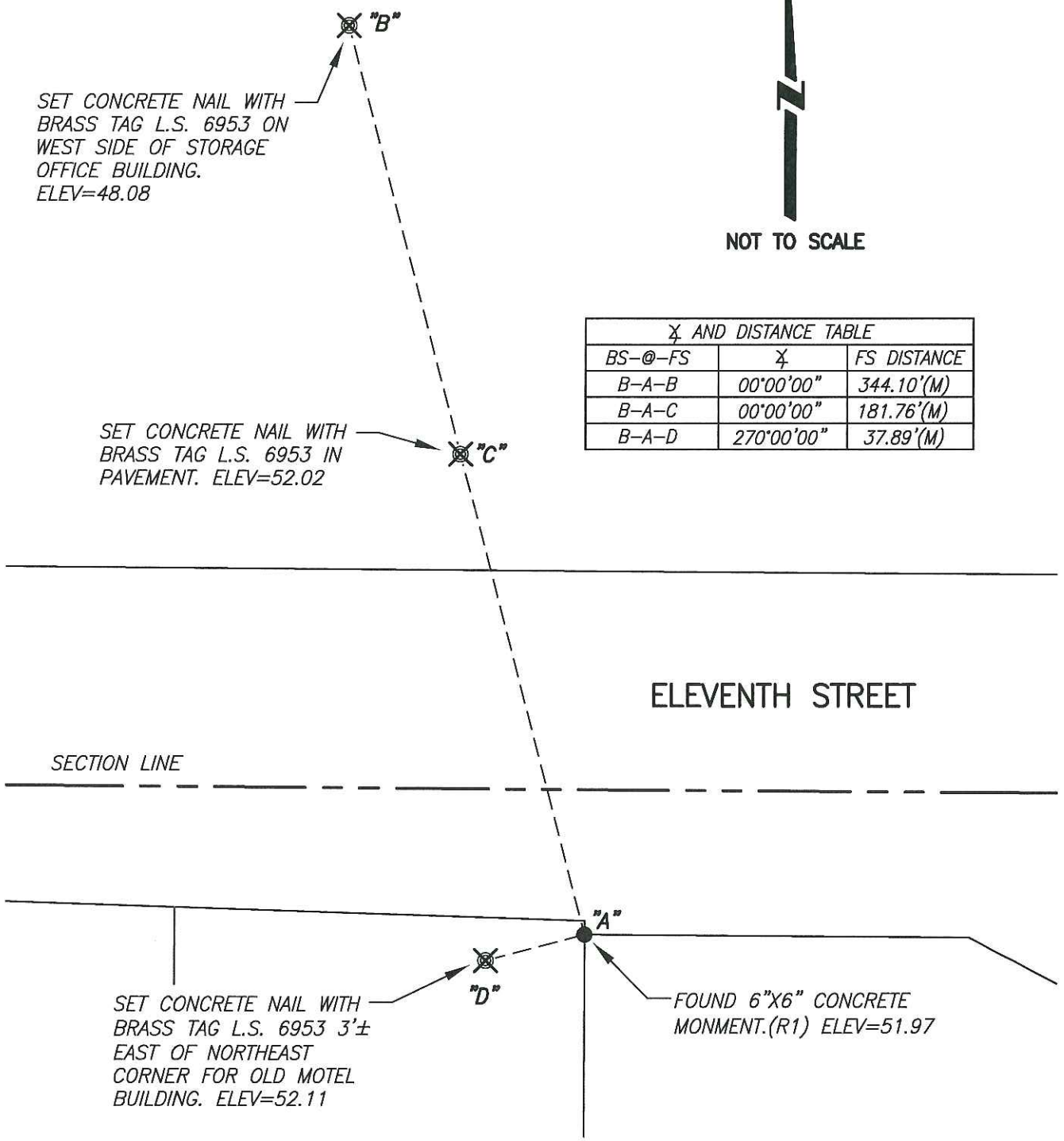


NOT TO SCALE

SET CONCRETE NAIL WITH BRASS TAG L.S. 6953 ON WEST SIDE OF STORAGE OFFICE BUILDING. ELEV=48.08

SET CONCRETE NAIL WITH BRASS TAG L.S. 6953 IN PAVEMENT. ELEV=52.02

X AND DISTANCE TABLE		
BS-@-FS	X	FS DISTANCE
B-A-B	00°00'00"	344.10'(M)
B-A-C	00°00'00"	181.76'(M)
B-A-D	270°00'00"	37.89'(M)



ELEVENTH STREET

SECTION LINE

SET CONCRETE NAIL WITH BRASS TAG L.S. 6953 3'± EAST OF NORTHEAST CORNER FOR OLD MOTEL BUILDING. ELEV=52.11

FOUND 6"X6" CONCRETE MONUMENT.(R1) ELEV=51.97