

CORNER RECORD

Document Number CR-15-56
City of TRACY County of SAN JOAQUIN, California

Brief Legal Description MONUMENT ON THE SOUTH SIDE OF ELEVENTH STREET APPROXIMATELY 512'± WEST OF CABE ROAD. LOCATED IN THE NORTHEAST QUARTER OF SECTION 27, T.2S, R.5E, M.D.B.&M.

NW 1/4	NE 1/4
SW 1/4	SE 1/4

CORNER TYPE

Government Corner Control
 Meander Property
 Rancho Other

COORDINATES (Optional)

N _____
 E _____
 Zone _____ NAD27 NAD83
 NAD83 Epoch _____
 Elev. 50.16
 Vert. Datum: NVGD29 NVGD88
 Meas. Units: Metric Imperial

SEC. 27 T.2S, R.5E Date of Survey 5-1-2015

Corner- Left as found Found and tagged Established Reestablished Rebuilt

Identification and type of corner found: Evidence used to identify or procedure used to establish or reestablish the corner:
FOUND BENT 3/4" IRON PIN NOT TAGGED ON THE SOUTH SIDE OF ELEVENTH STREET APPROXIMATELY 512'± WEST OF CABE ROAD. LOCATED IN THE NORTHEAST QUARTER OF SECTION 27, T.2S, R.5E, M.D.B.&M. FOUND MONUMENT AS SHOWN ON RECORD OF SURVEY FILED IN BOOK 19 OF SURVEYS AT PAGE 74, SAN JOAQUIN COUNTY RECORDS.

A description of the physical condition of the monument as found and as set or reset:
MONUMENT IS IN AN AREA OF RECONSTRUCTION, SET TIES AS SHOWN ON PAGE 2.

SURVEYOR'S STATEMENT

This Corner Record was prepared by me or under my direction in conformance with the Land Surveyors' Act on MAY 12, 2015,



Signed [Signature] P.L.S. or R.C.E. Number 6953

COUNTY SURVEYOR'S STATEMENT

This Corner Record was received May 18, 2015 and examined and filed June 1, 2015



Signed [Signature] P.L.S. or R.C.E. No: 4842

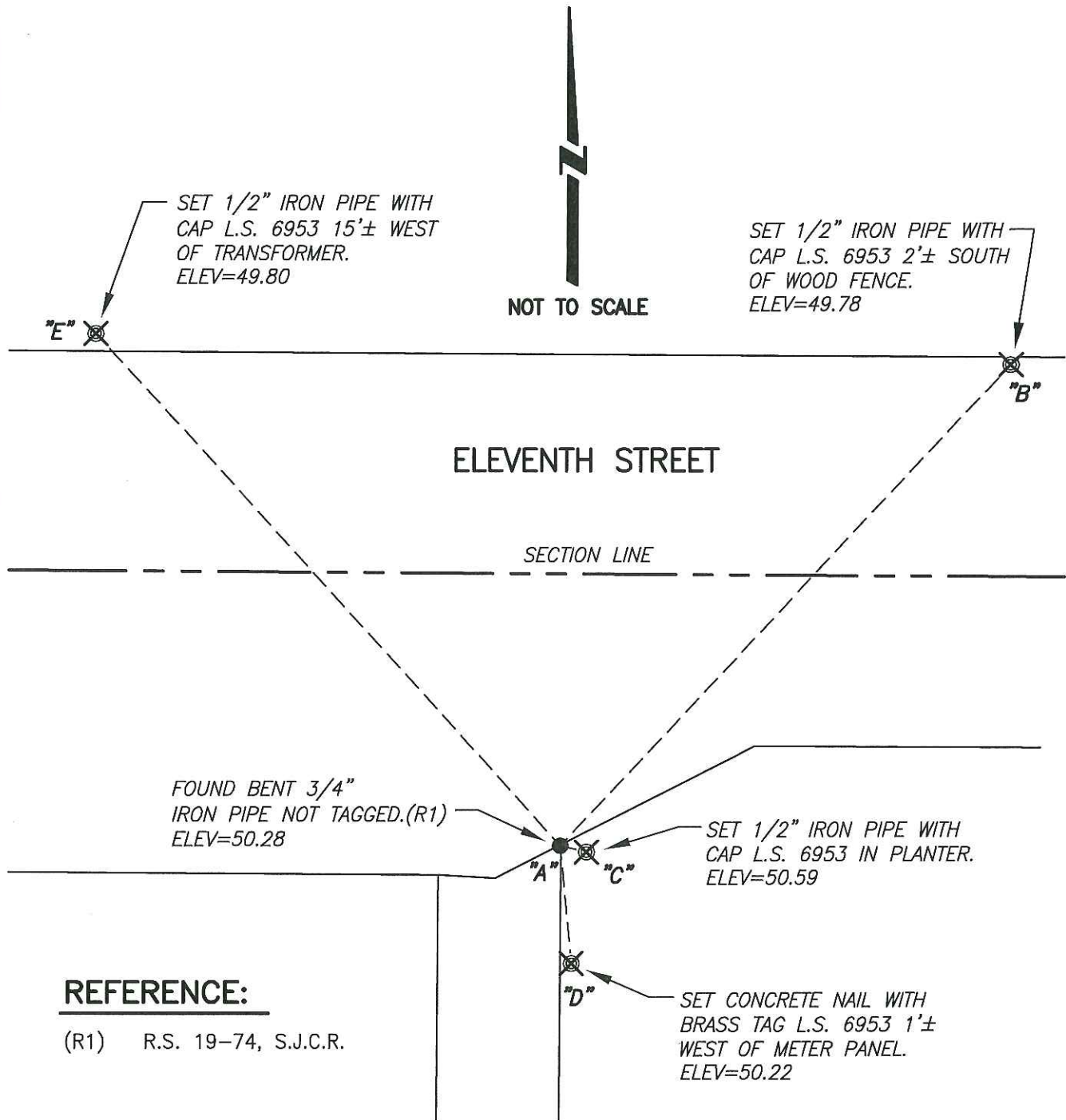
Title Acting COUNTY SURVEYOR

County Surveyor's Comment _____

LEGEND:

- ⊗ SET MONUMENT AS NOTED.
- FOUND MONUMENT AS NOTED.
- R.S. DENOTES RECORD OF SURVEY
- (M) MEASURED DISTANCE. ALL DISTANCES ARE MEASURED UNLESS NOTED OTHERWISE.

AZ AND DISTANCE TABLE		
BS-@-FS	AZ	FS DISTANCE
B-A-B	00°00'00"	240.26'(M)
B-A-C	60°22'59"	9.83'(M)
B-A-D	131°30'31"	43.11'(M)
B-A-E	274°36'30"	251.72'(M)



REFERENCE:

(R1) R.S. 19-74, S.J.C.R.