

# CORNER RECORD

Document Number CR-15-55  
County of SAN JOAQUIN, California

City of TRACY

Brief Legal Description MONUMENT ON THE SOUTH SIDE OF ELEVENTH STREET APPROXIMATELY 338'± WEST OF CABE ROAD. LOCATED IN THE NORTHEAST QUARTER OF SECTION 27, T.2S, R.5E, M.D.B.&M.

### CORNER TYPE

### COORDINATES (Optional)

|           |           |
|-----------|-----------|
| NW<br>1/4 | NE<br>1/4 |
| SW<br>1/4 | SE<br>1/4 |

Government Corner  Control   
 Meander  Property   
 Rancho  Other

N \_\_\_\_\_  
 E \_\_\_\_\_  
 Zone \_\_\_\_\_ NAD27  NAD83   
 NAD83 Epoch \_\_\_\_\_  
 Elev. 49.70  
 Vert. Datum: NVGD29  NVGD88   
 Meas. Units: Metric  Imperial

SEC. 27 T.2S, R.5E Date of Survey 5-1-2015

Corner— Left as found  Found and tagged  Established  Reestablished  Rebuilt

Identification and type of corner found: Evidence used to identify or procedure used to establish or reestablish the corner:  
FOUND 3/4" IRON PIPE NOT TAGGED ON THE SOUTH SIDE OF ELEVENTH STREET APPROXIMATELY 338'± WEST OF CABE ROAD. LOCATED IN THE NORTHEAST QUARTER OF SECTION 27, T.2S, R.5E, M.D.B.&M. FOUND MONUMENT AS SHOWN ON PARCEL MAP FILED IN BOOK 7 OF PARCEL MAPS AT PAGE 112, SAN JOAQUIN COUNTY RECORDS.

A description of the physical condition of the monument as found and as set or reset:  
MONUMENT IS IN AN AREA OF RECONSTRUCTION, SET TIES AS SHOWN ON PAGE 2.

### SURVEYOR'S STATEMENT

This Corner Record was prepared by me or under my direction in conformance with the Land Surveyors' Act on MAY 12, 2015,



Signed [Signature] P.L.S. or R.C.E. Number 6953

### COUNTY SURVEYOR'S STATEMENT

This Corner Record was received May 18, 2015 and examined and filed June 1, 2015



Signed [Signature] P.L.S. or R.C.E. No: 4842

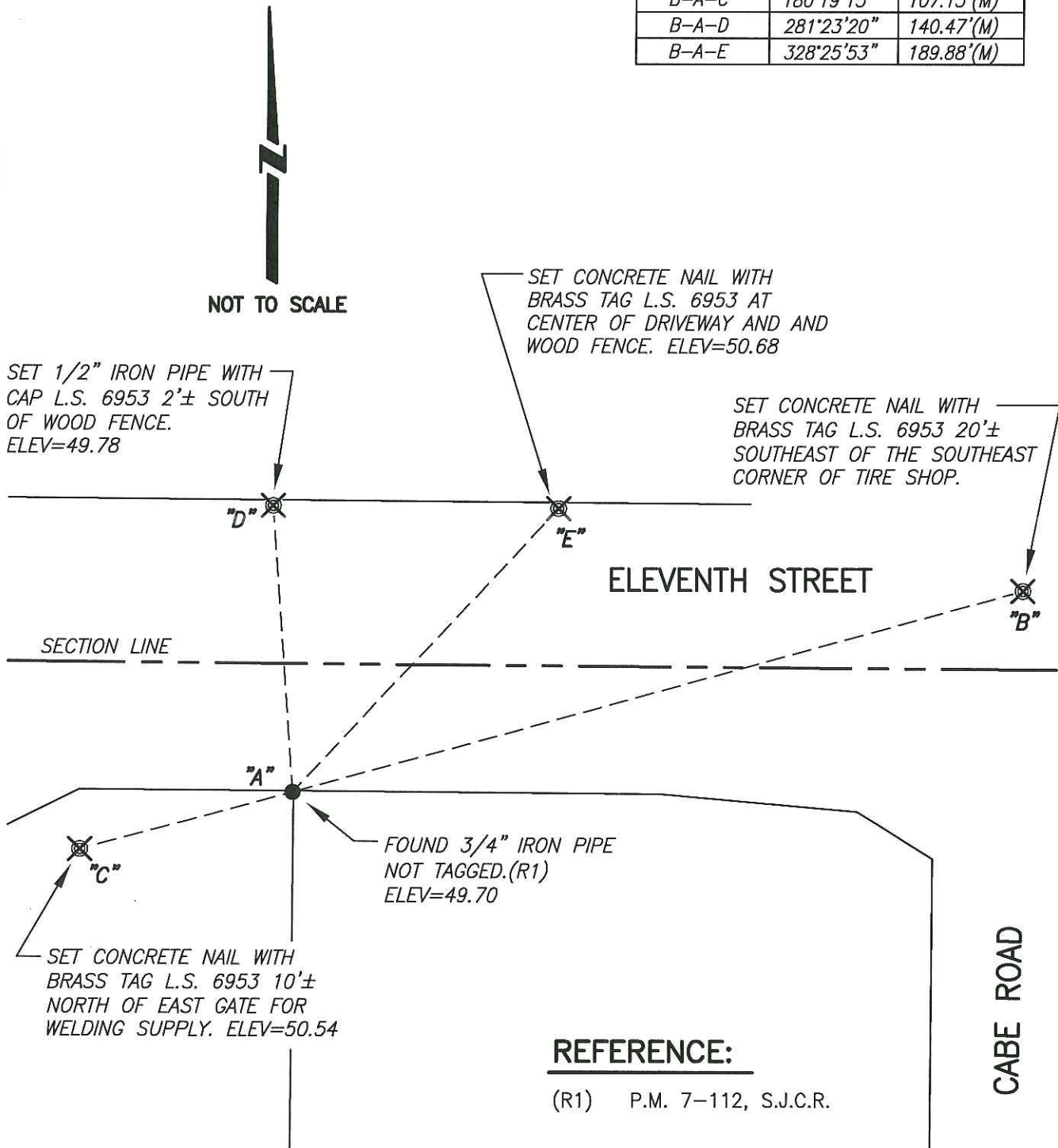
Title Acting County Surveyor

County Surveyor's Comment \_\_\_\_\_

**LEGEND:**

- ⊗ SET MONUMENT AS NOTED.
- FOUND MONUMENT AS NOTED.
- P.M. DENOTES PARCEL MAP
- (M) MEASURED DISTANCE. ALL DISTANCES ARE MEASURED UNLESS NOTED OTHERWISE.

| AZ AND DISTANCE TABLE |            |             |
|-----------------------|------------|-------------|
| BS-@-FS               | AZ         | FS DISTANCE |
| B-A-B                 | 00°00'00"  | 370.32'(M)  |
| B-A-C                 | 180°19'15" | 107.13'(M)  |
| B-A-D                 | 281°23'20" | 140.47'(M)  |
| B-A-E                 | 328°25'53" | 189.88'(M)  |



**REFERENCE:**

(R1) P.M. 7-112, S.J.C.R.